

IHCeasy[®] SRSF1 Ready-To-Use IHC Kit

Catalog Number: **KHC1396**

General Information

Sample type:
FFPE tissue
Cited sample type:
Reactivity:
Human, Mouse, Rat
Cited Reactivity:

Assay type:
Immunohistochemistry
Primary antibody type:
Mouse Monoclonal
Secondary antibody type:
Polymer-HRP-Goat anti-Mouse

Kit Component

Component	Size	Concentration
Antigen Retrieval Buffer	100 mL	50×
Washing Buffer	100 mL ×2	20×
Blocking Buffer	5 mL	RTU
Primary Antibody	5 mL	RTU
Secondary Antibody	5 mL	RTU
Chromogen Component A	0.2 mL	RTU
Chromogen Component B	4 mL	RTU
Signal Enhancer	5 mL	RTU
Counter Staining Reagent	5 mL	RTU
Mounting Media	5 mL	RTU
Control Slide	1 slide (Optional)	FFPE
Datasheet	1 Copy	
Manual	1 Copy	

Storage Instructions

All the reagents are stored at 2-8°C. The kit is stable for 6 months from the date of receipt.

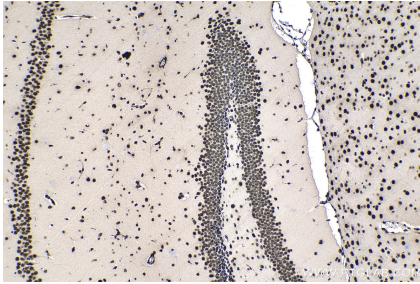
Background

SFRS1, also named as ASF, SF2, SF2P33, SFRS1 and ASF-1, belongs to the splicing factor SR family. It plays a role in preventing exon skipping, ensuring the accuracy of splicing and regulating alternative splicing. SFRS1 interacts with other spliceosomal components, via the RS domains, to form a bridge between the 5'- and 3'-splice site binding components, U1 snRNP and U2AF. Isoform ASF-2 and isoform ASF-3 act as splicing repressors.

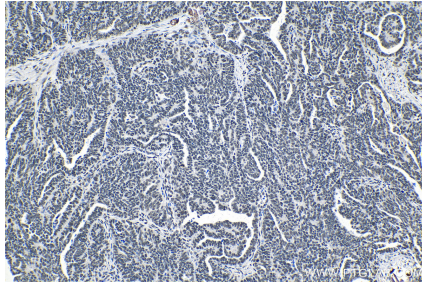
Synonyms

Alternative splicing factor 1, ASF, ASF 1, ASF/SF2, SF2, SF2p33, SFRS1, SRp30a, SRSF1

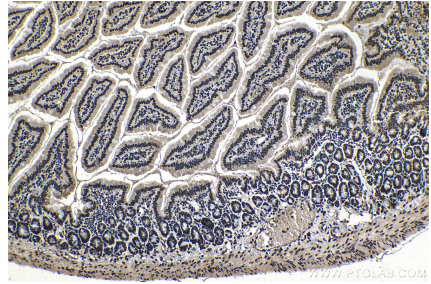
Selected Validation Data



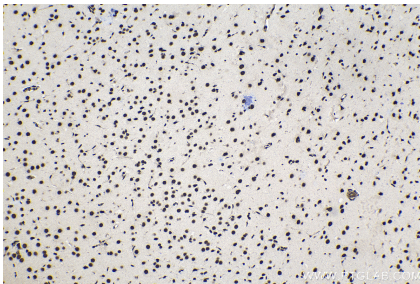
Immunohistochemical analysis of paraffin-embedded mouse brain tissue slide using KHC1396 (SRSF1 IHC Kit).



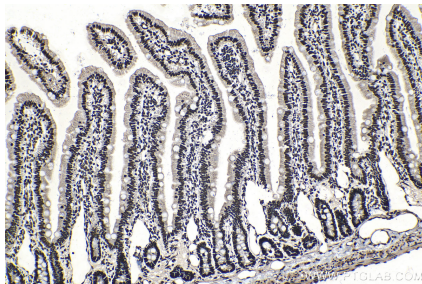
Immunohistochemical analysis of paraffin-embedded human ovary tumor tissue slide using KHC1396 (SRSF1 IHC Kit).



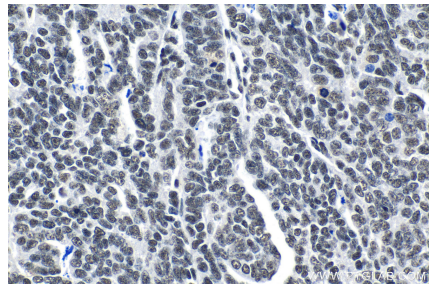
Immunohistochemical analysis of paraffin-embedded mouse small intestine tissue slide using KHC1396 (SRSF1 IHC Kit).



Immunohistochemical analysis of paraffin-embedded rat brain tissue slide using KHC1396 (SRSF1 IHC Kit).



Immunohistochemical analysis of paraffin-embedded rat small intestine tissue slide using KHC1396 (SRSF1 IHC Kit).



Immunohistochemical analysis of paraffin-embedded human ovary tumor tissue slide using KHC1396 (SRSF1 IHC Kit).