

IHC*easy* HNRNPL Ready-To-Use IHC Kit

Catalog Number: **KHC1386**

General Information

Sample type:
FFPE tissue
Cited sample type:
Reactivity:
Human, Mouse, Rat
Cited Reactivity:

Assay type:
Immunohistochemistry
Primary antibody type:
Rabbit Recombinant
Secondary antibody type:
Polymer-HRP-Goat anti-Rabbit

Kit Component

Component	Size	Concentration
Antigen Retrieval Buffer	100 mL	50×
Washing Buffer	100 mL ×2	20×
Blocking Buffer	5 mL	RTU
Primary Antibody	5 mL	RTU
Secondary Antibody	5 mL	RTU
Chromogen Component A	0.2 mL	RTU
Chromogen Component B	4 mL	RTU
Signal Enhancer	5 mL	RTU
Counter Staining Reagent	5 mL	RTU
Mounting Media	5 mL	RTU
Control Slide	1 slide (Optional)	FFPE
Datasheet	1 Copy	
Manual	1 Copy	

Storage Instructions

All the reagents are stored at 2-8°C. The kit is stable for 6 months from the date of receipt.

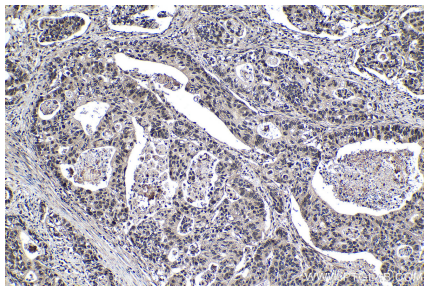
Background

Heterogeneous nuclear ribonucleoprotein L (hnRNP L) is a component of the heterogeneous nuclear ribonucleoprotein (hnRNP) complexes which provide the substrate for the processing events that pre-mRNAs undergo before becoming functional, translatable mRNAs in the cytoplasm. It is associated with most nascent transcripts including those of the landmark giant loops of amphibian lampbrush chromosomes. The two isoforms of hnRNP L are generated by alternative splicing. The human hnRNPL gene encodes a protein that is localized in the nucleoplasm and cytoplasm.

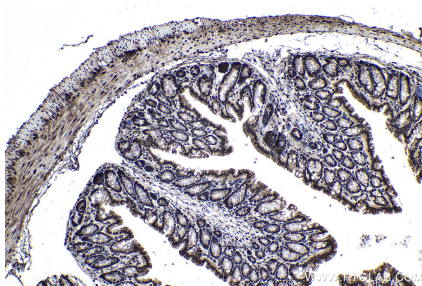
Synonyms

FLJ35509, hnRNP L, HNRNPL, HNRPL, P/OKcl.14

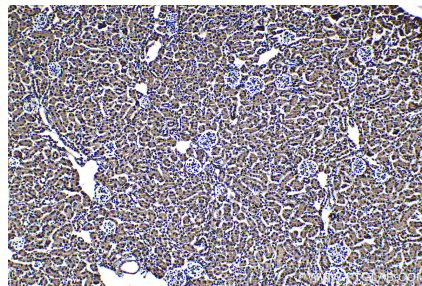
Selected Validation Data



Immunohistochemical analysis of paraffin-embedded human stomach cancer tissue slide using KHC1386 (HNRNPL IHC Kit).



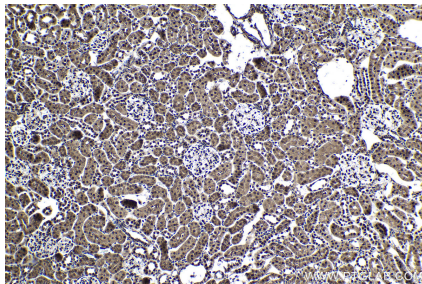
Immunohistochemical analysis of paraffin-embedded mouse colon tissue slide using KHC1386 (HNRNPL IHC Kit).



Immunohistochemical analysis of paraffin-embedded mouse kidney tissue slide using KHC1386 (HNRNPL IHC Kit).



Immunohistochemical analysis of paraffin-embedded rat colon tissue slide using KHC1386 (HNRNPL IHC Kit).



Immunohistochemical analysis of paraffin-embedded rat kidney tissue slide using KHC1386 (HNRNPL IHC Kit).