

IHC*easy* MYCBP Ready-To-Use IHC Kit

Catalog Number: **KHC1367**

General Information

Sample type:
FFPE tissue
Cited sample type:
Reactivity:
Human, Mouse, Rat
Cited Reactivity:

Assay type:
Immunohistochemistry
Primary antibody type:
Rabbit Polyclonal
Secondary antibody type:
Polymer-HRP-Goat anti-Rabbit

Kit Component

Component	Size	Concentration
Antigen Retrieval Buffer	100 mL	50×
Washing Buffer	100 mL ×2	20×
Blocking Buffer	5 mL	RTU
Primary Antibody	5 mL	RTU
Secondary Antibody	5 mL	RTU
Chromogen Component A	0.2 mL	RTU
Chromogen Component B	4 mL	RTU
Signal Enhancer	5 mL	RTU
Counter Staining Reagent	5 mL	RTU
Mounting Media	5 mL	RTU
Control Slide	1 slide (Optional)	FFPE
Datasheet	1 Copy	
Manual	1 Copy	

Storage Instructions

All the reagents are stored at 2-8°C. The kit is stable for 6 months from the date of receipt.

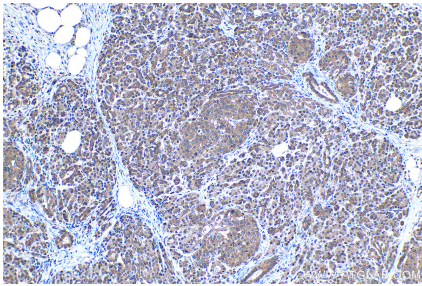
Background

MYC binding protein(MYCBP), encoded by MYCBP gene, binds to N-terminal region of MYC, and then MYC can activate E box-dependent transcription. Upon increasing expression of MYC, MYCBP translocates into the nucleus in the S phase of the cell cycle. MYCBP may involve in spermatogenesis, since it's found to be interacted with AKAP84/149 in the mitochondria in somatic cells and sperm. It highly expressed in heart, placenta, pancreas, skeletal muscle and kidney, but low in lung.

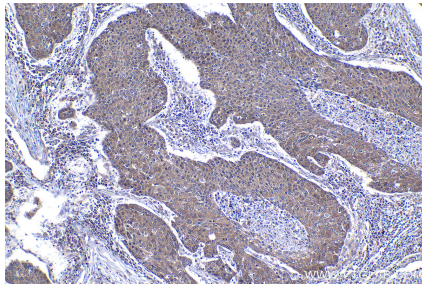
Synonyms

AMY 1, AMY1, Associate of Myc 1, c myc binding protein, MYCBP

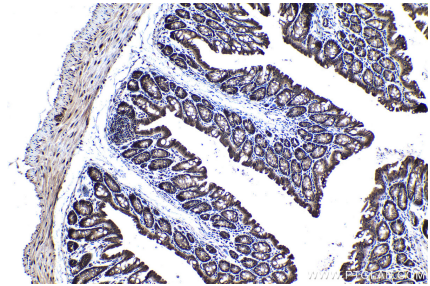
Selected Validation Data



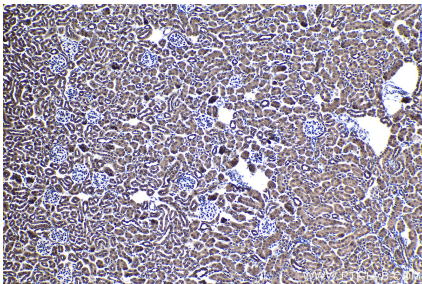
Immunohistochemical analysis of paraffin-embedded human pancreas cancer tissue slide using KHC1367 (MYCBP IHC Kit).



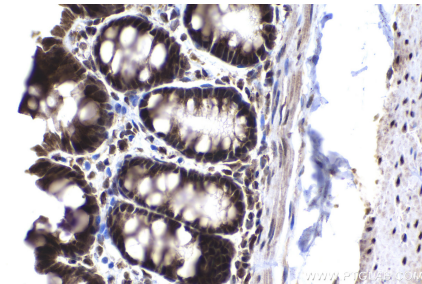
Immunohistochemical analysis of paraffin-embedded human lung cancer tissue slide using KHC1367 (MYCBP IHC Kit).



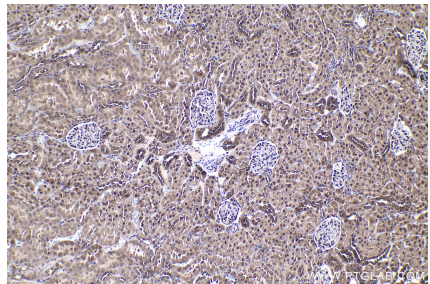
Immunohistochemical analysis of paraffin-embedded mouse colon tissue slide using KHC1367 (MYCBP IHC Kit).



Immunohistochemical analysis of paraffin-embedded mouse kidney tissue slide using KHC1367 (MYCBP IHC Kit).



Immunohistochemical analysis of paraffin-embedded rat colon tissue slide using KHC1367 (MYCBP IHC Kit).



Immunohistochemical analysis of paraffin-embedded rat kidney tissue slide using KHC1367 (MYCBP IHC Kit).