

# IHC*easy* CLSTN1 Ready-To-Use IHC Kit

Catalog Number: **KHC1359**

## General Information

Sample type:  
FFPE tissue  
Cited sample type:  
Reactivity:  
Human, Mouse, Rat  
Cited Reactivity:

Assay type:  
Immunohistochemistry  
Primary antibody type:  
Rabbit Polyclonal  
Secondary antibody type:  
Polymer-HRP-Goat anti-Rabbit

## Kit Component

Component	Size	Concentration
Antigen Retrieval Buffer	100 mL	50×
Washing Buffer	100 mL ×2	20×
Blocking Buffer	5 mL	RTU
Primary Antibody	5 mL	RTU
Secondary Antibody	5 mL	RTU
Chromogen Component A	0.2 mL	RTU
Chromogen Component B	4 mL	RTU
Signal Enhancer	5 mL	RTU
Counter Staining Reagent	5 mL	RTU
Mounting Media	5 mL	RTU
Control Slide	1 slide (Optional)	FFPE
Datasheet	1 Copy	
Manual	1 Copy	

## Storage Instructions

All the reagents are stored at 2-8°C. The kit is stable for 6 months from the date of receipt.

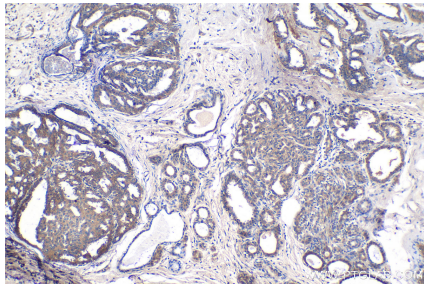
## Background

Calsyntenins (calsyntenin-1, -2, -3) compose a family of neuronally expressed proteins that belong to the cadherin superfamily of cell adhesion molecules. Calsyntenin-1 (CLSTN1) is a proteolytically processed postsynaptic membrane protein with a cytoplasmic calcium-binding domain. By binding Ca<sup>2+</sup>, calsyntenin-1 may modulate Ca<sup>2+</sup>-mediated postsynaptic signals. Calsyntenin-1 is a transmembrane cargo-docking protein for Kinesin-1-mediated vesicular transport. It can mediate axonal transport of the amyloid precursor protein and regulate A $\beta$  production.

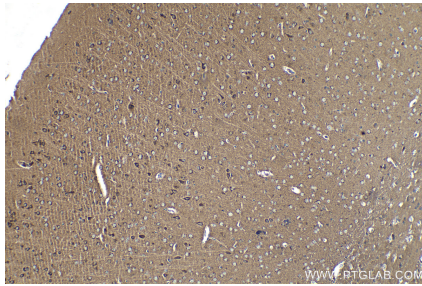
## Synonyms

ALC ALPHA, Alcadin alpha, alalpha1, alalpha2, C terminal fragment 1 alpha, calsyntenin 1, Calsyntenin-1, CLSTN1, CS1, CSTN1, KIAA0911, PIK3CD, SAlc alpha CTF1 alpha, XB31alpha

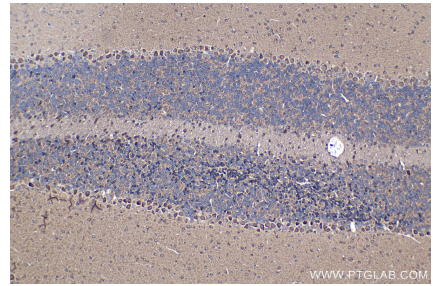
## Selected Validation Data



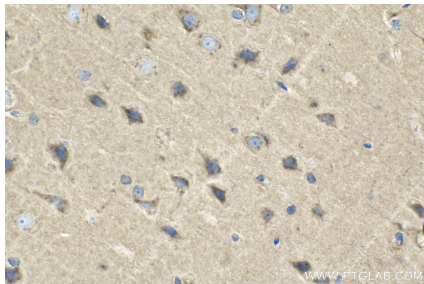
Immunohistochemical analysis of paraffin-embedded human breast cancer tissue slide using KHC1359 (CLSTN1 IHC Kit).



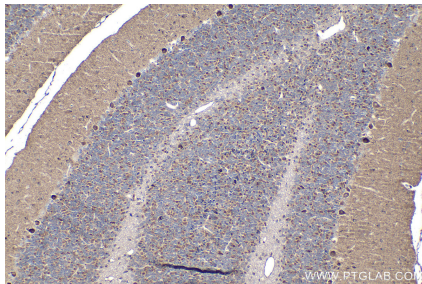
Immunohistochemical analysis of paraffin-embedded mouse brain tissue slide using KHC1359 (CLSTN1 IHC Kit).



Immunohistochemical analysis of paraffin-embedded mouse cerebellum tissue slide using KHC1359 (CLSTN1 IHC Kit).



Immunohistochemical analysis of paraffin-embedded rat brain tissue slide using KHC1359 (CLSTN1 IHC Kit).



Immunohistochemical analysis of paraffin-embedded rat cerebellum tissue slide using KHC1359 (CLSTN1 IHC Kit).