

# IHC*easy* TSC22D1 Ready-To-Use IHC Kit

Catalog Number: **KHC1341**

## General Information

**Sample type:**  
FFPE tissue

**Cited sample type:**

**Reactivity:**  
Human, Mouse, Rat

**Cited Reactivity:**

**Assay type:**  
Immunohistochemistry

**Primary antibody type:**  
Rabbit Polyclonal

**Secondary antibody type:**  
Polymer-HRP-Goat anti-Rabbit

## Kit Component

Component	Size	Concentration
Antigen Retrieval Buffer	100 mL	50×
Washing Buffer	100 mL ×2	20×
Blocking Buffer	5 mL	RTU
Primary Antibody	5 mL	RTU
Secondary Antibody	5 mL	RTU
Chromogen Component A	0.2 mL	RTU
Chromogen Component B	4 mL	RTU
Signal Enhancer	5 mL	RTU
Counter Staining Reagent	5 mL	RTU
Mounting Media	5 mL	RTU
Control Slide	1 slide (Optional)	FFPE
Datasheet	1 Copy	
Manual	1 Copy	

## Storage Instructions

All the reagents are stored at 2-8°C. The kit is stable for 6 months from the date of receipt.

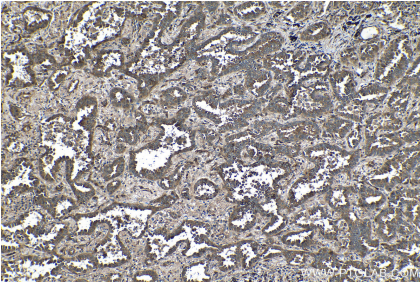
## Background

TSC22 domain family 1, transforming growth factor beta 1 induced transcript 4, (TSC22D1, synonyms: TSC22, TGFB14, MGC17597) is a member of a family of leucine zipper containing transcription factors with repressor activity and belongs to the large family of early response genes. TSC-22 regulates cell growth and differentiation, and cell death. Leucine zipper structure of TSC22 inhibits the anchorage independent growth of cancer cells. TSC-22 is also an important downstream component of peroxisome proliferator-activated receptor (PPAR) and TGF-beta signaling during intestinal epithelial cell differentiation.

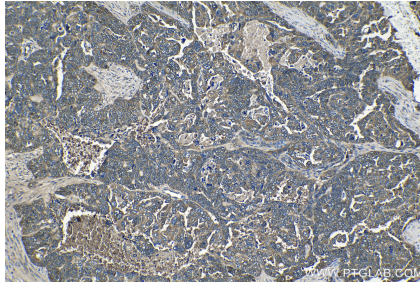
## Synonyms

Cerebral protein 2, KIAA1994, Regulatory protein TSC 22, RP11 269C23.2, TGFB14, TSC22, TSC22 domain family protein 1, TSC22 domain family, member 1, TSC22D1

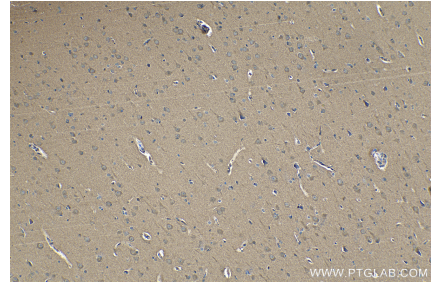
## Selected Validation Data



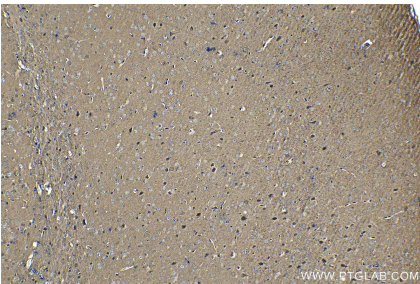
Immunohistochemical analysis of paraffin-embedded human lung cancer tissue slide using KHC1341 (TSC22D1 IHC Kit).



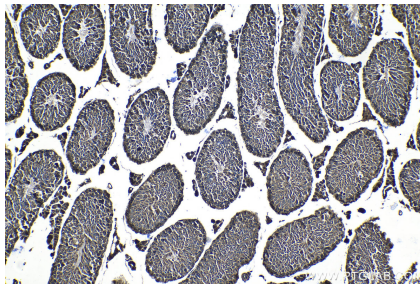
Immunohistochemical analysis of paraffin-embedded human ovary tumor tissue slide using KHC1341 (TSC22D1 IHC Kit).



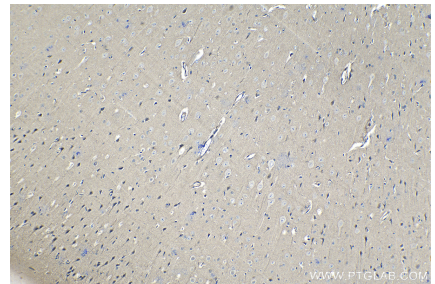
Immunohistochemical analysis of paraffin-embedded human gliomas tissue slide using KHC1341 (TSC22D1 IHC Kit).



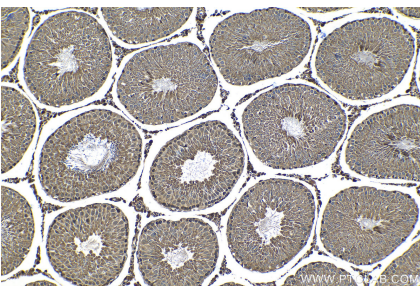
Immunohistochemical analysis of paraffin-embedded mouse brain tissue slide using KHC1341 (TSC22D1 IHC Kit).



Immunohistochemical analysis of paraffin-embedded mouse testis tissue slide using KHC1341 (TSC22D1 IHC Kit).



Immunohistochemical analysis of paraffin-embedded rat brain tissue slide using KHC1341 (TSC22D1 IHC Kit).



Immunohistochemical analysis of paraffin-embedded rat testis tissue slide using KHC1341 (TSC22D1 IHC Kit).