

# IHC*easy* LAMP1/CD107a Ready-To-Use IHC Kit

Catalog Number: **KHC1336**

## General Information

Sample type:  
FFPE tissue  
Cited sample type:  
Reactivity:  
Human  
Cited Reactivity:

Assay type:  
Immunohistochemistry  
Primary antibody type:  
Mouse Monoclonal  
Secondary antibody type:  
Polymer-HRP-Goat anti-Mouse

## Kit Component

Component	Size	Concentration
Antigen Retrieval Buffer	100 mL	50×
Washing Buffer	100 mL ×2	20×
Blocking Buffer	5 mL	RTU
Primary Antibody	5 mL	RTU
Secondary Antibody	5 mL	RTU
Chromogen Component A	0.2 mL	RTU
Chromogen Component B	4 mL	RTU
Signal Enhancer	5 mL	RTU
Counter Staining Reagent	5 mL	RTU
Mounting Media	5 mL	RTU
Control Slide	1 slide (Optional)	FFPE
Datasheet	1 Copy	
Manual	1 Copy	

## Storage Instructions

All the reagents are stored at 2-8°C. The kit is stable for 6 months from the date of receipt.

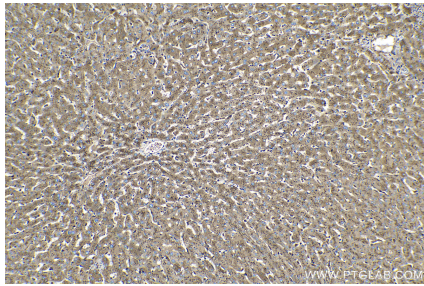
## Background

LAMP1 (also known as CD107a) is a heavily glycosylated membrane protein enriched in the lysosomal membrane. LAMP1 functions to provide selectins with carbohydrate ligands. This protein has also been shown to be a marker of degranulation on lymphocytes such as CD8+ and NK cells and may also play a role in tumor cell differentiation and metastasis.

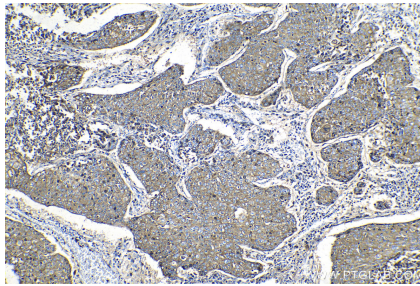
## Synonyms

CD107a, Cell and organelle markers, LAMP 1, LAMP1, LAMPA, LGP120, lysosomal marker, Lysosome Marker

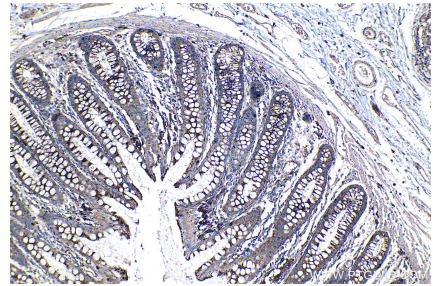
## Selected Validation Data



Immunohistochemical analysis of paraffin-embedded human liver tissue slide using KHC1336 (LAMP1/CD107a IHC Kit).



Immunohistochemical analysis of paraffin-embedded human lung cancer tissue slide using KHC1336 (LAMP1/CD107a IHC Kit).



Immunohistochemical analysis of paraffin-embedded human colon tissue slide using KHC1336 (LAMP1/CD107a IHC Kit).