

IHC*easy* LPAR3 Ready-To-Use IHC Kit

Catalog Number: **KHC1301**

General Information

Sample type:
FFPE tissue

Cited sample type:

Reactivity:
Human, Mouse, Rat

Cited Reactivity:

Assay type:
Immunohistochemistry

Primary antibody type:
Rabbit Polyclonal

Secondary antibody type:
Polymer-HRP-Goat anti-Rabbit

Kit Component

Component	Size	Concentration
Antigen Retrieval Buffer	100 mL	50×
Washing Buffer	100 mL × 2	20×
Blocking Buffer	5 mL	RTU
Primary Antibody	5 mL	RTU
Secondary Antibody	5 mL	RTU
Chromogen Component A	0.2 mL	RTU
Chromogen Component B	4 mL	RTU
Signal Enhancer	5 mL	RTU
Counter Staining Reagent	5 mL	RTU
Mounting Media	5 mL	RTU
Control Slide	1 slide (Optional)	FFPE
Datasheet	1 Copy	
Manual	1 Copy	

Storage Instructions

All the reagents are stored at 2-8°C. The kit is stable for 6 months from the date of receipt.

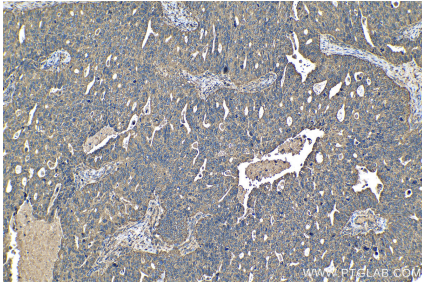
Background

LPAR3, also named as EDG7 and LPA3, belongs to the G-protein coupled receptor 1 family. LPAR3 is a receptor for lysophosphatidic acid (LPA), a mediator of diverse cellular activities. LPAR3 may play a role in the development of ovarian cancer. Seems to be coupled to the G(i)/G(o) and G(q) families of heteromeric G proteins. Primary antibody in this kit is specific to LPAR3.

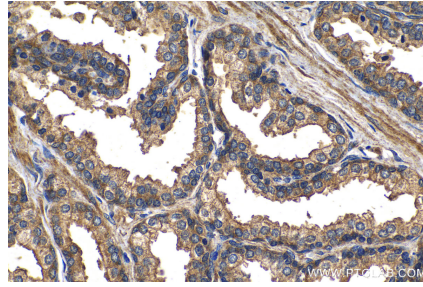
Synonyms

Edg 7, EDG7, EDG7-Specific, GPCR, HOFNH30, LP A3, LPA 3, LPA receptor 3, LPA3, LPAR3, RP4 67813

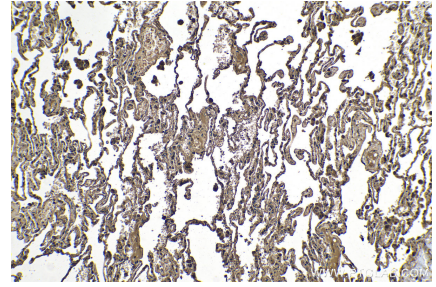
Selected Validation Data



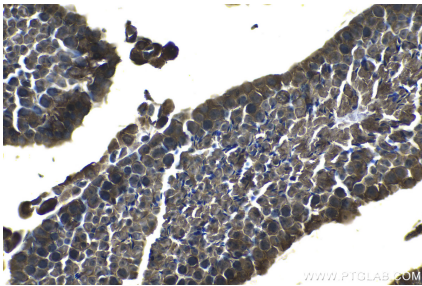
Immunohistochemical analysis of paraffin-embedded human ovary tumor tissue slide using KHC1301 (LPAR3 IHC Kit).



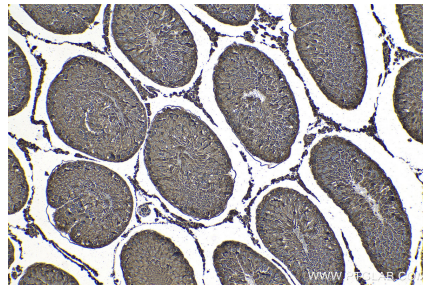
Immunohistochemical analysis of paraffin-embedded human prostate hyperplasia tissue slide using KHC1301 (LPAR3 IHC Kit).



Immunohistochemical analysis of paraffin-embedded human lung tissue slide using KHC1301 (LPAR3 IHC Kit).



Immunohistochemical analysis of paraffin-embedded mouse testis tissue slide using KHC1301 (LPAR3 IHC Kit).



Immunohistochemical analysis of paraffin-embedded rat testis tissue slide using KHC1301 (LPAR3 IHC Kit).