

# IHC*easy* NHE1/SLC9A1 Ready-To-Use IHC Kit

Catalog Number: **KHC1288**

## General Information

Sample type:  
FFPE tissue  
Cited sample type:  
Reactivity:  
Human, Mouse, Rat  
Cited Reactivity:

Assay type:  
Immunohistochemistry  
Primary antibody type:  
Rabbit Polyclonal  
Secondary antibody type:  
Polymer-HRP-Goat anti-Rabbit

## Kit Component

Component	Size	Concentration
Antigen Retrieval Buffer	100 mL	50×
Washing Buffer	100 mL ×2	20×
Blocking Buffer	5 mL	RTU
Primary Antibody	5 mL	RTU
Secondary Antibody	5 mL	RTU
Chromogen Component A	0.2 mL	RTU
Chromogen Component B	4 mL	RTU
Signal Enhancer	5 mL	RTU
Counter Staining Reagent	5 mL	RTU
Mounting Media	5 mL	RTU
Control Slide	1 slide (Optional)	FFPE
Datasheet	1 Copy	
Manual	1 Copy	

## Storage Instructions

All the reagents are stored at 2-8°C. The kit is stable for 6 months from the date of receipt.

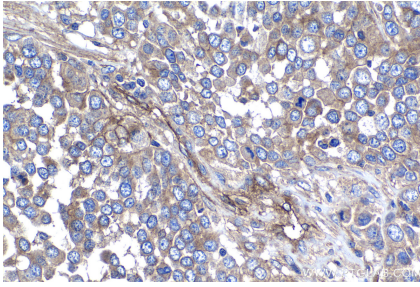
## Background

NHE1, also named as SLC9A1, encodes an Na<sup>+</sup>/H<sup>+</sup> antiporter that is a membrane-bound enzyme involved in regulating pH of vertebrate cells. NHE1 regulates a number of cell behaviors, including adhesion, shape determination, migration, and proliferation. It is inhibited by the non-specific diuretic drug amiloride and activated by growth factors, mitogens, neurotransmitters, tumor promoters, and others. NHE1 is expressed in heart where it contributes to cardiomyocyte pH homeostasis.

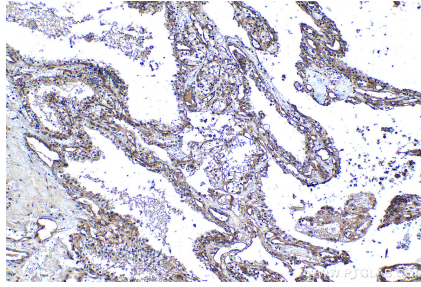
## Synonyms

APNH, APNH1, FLJ42224, Na<sup>(+)</sup>/H<sup>(+)</sup> exchanger 1, NHE 1, NHE1, SLC9A1, Sodium/hydrogen exchanger 1

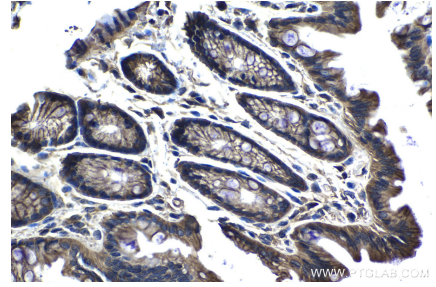
## Selected Validation Data



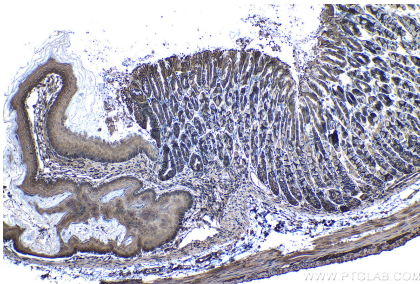
Immunohistochemical analysis of paraffin-embedded human ovary tumor tissue slide using KHC1288 (NHE1/SLC9A1 IHC Kit).



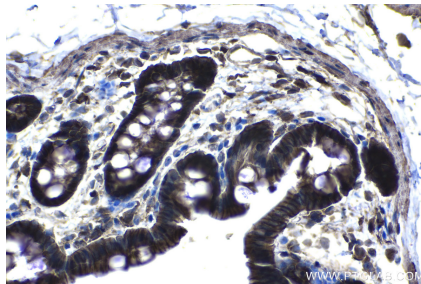
Immunohistochemical analysis of paraffin-embedded human renal cell carcinoma tissue slide using KHC1288 (NHE1/SLC9A1 IHC Kit).



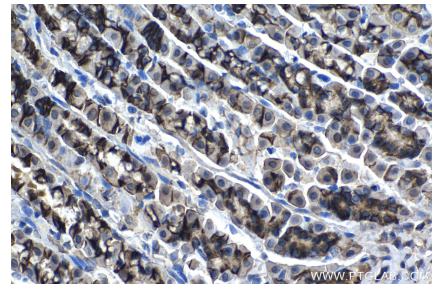
Immunohistochemical analysis of paraffin-embedded mouse colon tissue slide using KHC1288 (NHE1/SLC9A1 IHC Kit).



Immunohistochemical analysis of paraffin-embedded mouse stomach tissue slide using KHC1288 (NHE1/SLC9A1 IHC Kit).



Immunohistochemical analysis of paraffin-embedded rat colon tissue slide using KHC1288 (NHE1/SLC9A1 IHC Kit).



Immunohistochemical analysis of paraffin-embedded rat stomach tissue slide using KHC1288 (NHE1/SLC9A1 IHC Kit).