

IHC*easy* GRB7 Ready-To-Use IHC Kit

Catalog Number: **KHC1285**

General Information

Sample type:
FFPE tissue
Cited sample type:
Reactivity:
Human, Mouse
Cited Reactivity:

Assay type:
Immunohistochemistry
Primary antibody type:
Rabbit Polyclonal
Secondary antibody type:
Polymer-HRP-Goat anti-Rabbit

Kit Component

Component	Size	Concentration
Antigen Retrieval Buffer	100 mL	50×
Washing Buffer	100 mL ×2	20×
Blocking Buffer	5 mL	RTU
Primary Antibody	5 mL	RTU
Secondary Antibody	5 mL	RTU
Chromogen Component A	0.2 mL	RTU
Chromogen Component B	4 mL	RTU
Signal Enhancer	5 mL	RTU
Counter Staining Reagent	5 mL	RTU
Mounting Media	5 mL	RTU
Control Slide	1 slide (Optional)	FFPE
Datasheet	1 Copy	
Manual	1 Copy	

Storage Instructions

All the reagents are stored at 2-8°C. The kit is stable for 6 months from the date of receipt.

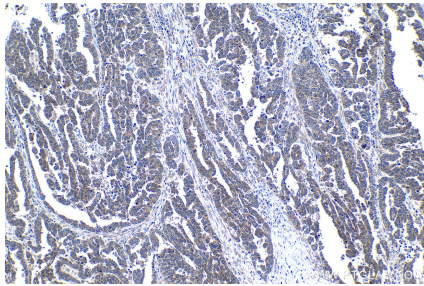
Background

GRB7 belongs to a family of adapter proteins. This family, including Grb10, Grb7 and Grb 14, contains a praline-rich, a RA, a PH, a BPS and SH2 domain. GRB7 associate with a number of receptors including EGFR and FAK. Functions of GRB7 include mobility because it associates receptors such FAK, and direct evidence from overexpression of this proteins.

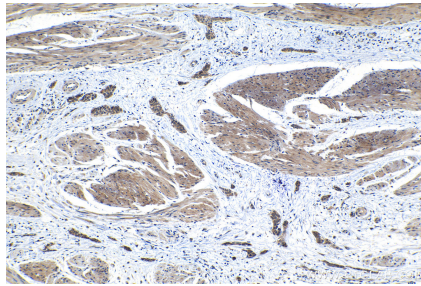
Synonyms

B47, GRB7, GRB7 adapter protein

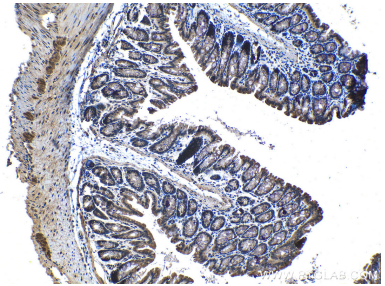
Selected Validation Data



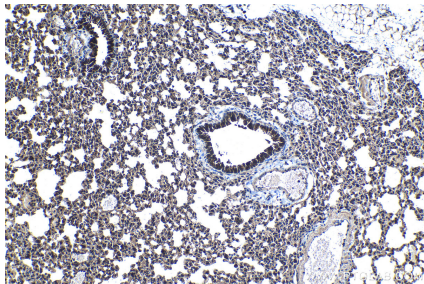
Immunohistochemical analysis of paraffin-embedded human ovary tumor tissue slide using KHC1285 (GRB7 IHC Kit).



Immunohistochemical analysis of paraffin-embedded human urothelial carcinoma tissue slide using KHC1285 (GRB7 IHC Kit).



Immunohistochemical analysis of paraffin-embedded mouse colon tissue slide using KHC1285 (GRB7 IHC Kit).



Immunohistochemical analysis of paraffin-embedded mouse lung tissue slide using KHC1285 (GRB7 IHC Kit).