

# IHC*easy* SRGAP1 Ready-To-Use IHC Kit

Catalog Number: **KHC1283**

## General Information

**Sample type:**  
FFPE tissue

**Cited sample type:**

**Reactivity:**  
Human, Mouse, Rat

**Cited Reactivity:**

**Assay type:**  
Immunohistochemistry

**Primary antibody type:**  
Rabbit Polyclonal

**Secondary antibody type:**  
Polymer-HRP-Goat anti-Rabbit

## Kit Component

Component	Size	Concentration
Antigen Retrieval Buffer	100 mL	50×
Washing Buffer	100 mL ×2	20×
Blocking Buffer	5 mL	RTU
Primary Antibody	5 mL	RTU
Secondary Antibody	5 mL	RTU
Chromogen Component A	0.2 mL	RTU
Chromogen Component B	4 mL	RTU
Signal Enhancer	5 mL	RTU
Counter Staining Reagent	5 mL	RTU
Mounting Media	5 mL	RTU
Control Slide	1 slide (Optional)	FFPE
Datasheet	1 Copy	
Manual	1 Copy	

## Storage Instructions

All the reagents are stored at 2-8°C. The kit is stable for 6 months from the date of receipt.

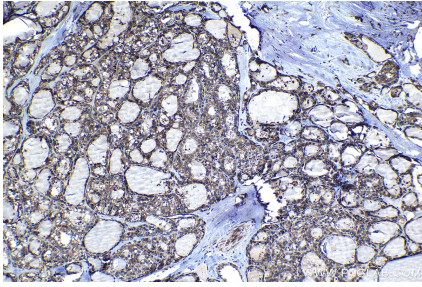
## Background

SRGAP1, also named as ARHGAP13 and KIAA1304, is a GTPase-activating protein for RhoA and Cdc42 small GTPases. Together with CDC42, SRGAP1 seems to be involved in the pathway mediating the repulsive signaling of Robo and Slit proteins in neuronal migration. SLIT2, probably through interaction with ROBO1, increases the interaction of SRGAP1 with ROBO1 and inactivates CDC42.

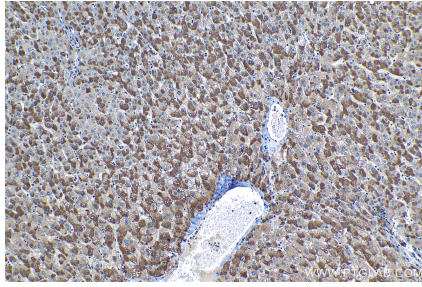
## Synonyms

ARHGAP13, KIAA1304, SRGAP1

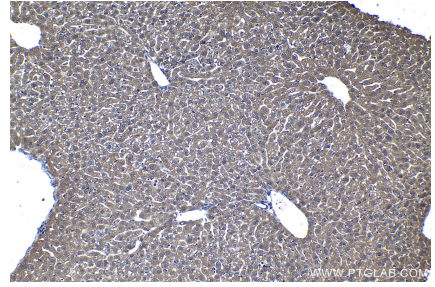
## Selected Validation Data



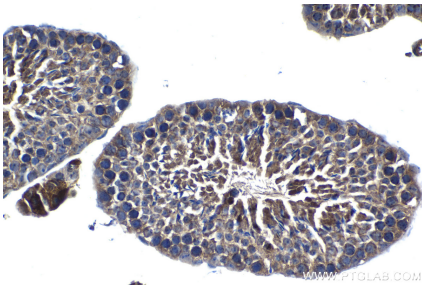
Immunohistochemical analysis of paraffin-embedded human thyroid cancer tissue slide using KHC1283 (SRGAP1 IHC Kit).



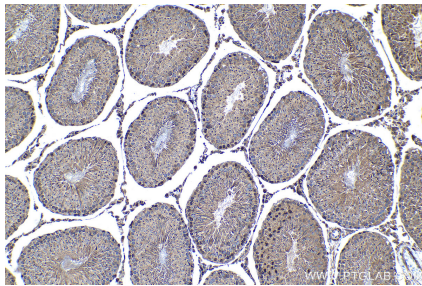
Immunohistochemical analysis of paraffin-embedded human liver tissue slide using KHC1283 (SRGAP1 IHC Kit).



Immunohistochemical analysis of paraffin-embedded mouse liver tissue slide using KHC1283 (SRGAP1 IHC Kit).



Immunohistochemical analysis of paraffin-embedded mouse testis tissue slide using KHC1283 (SRGAP1 IHC Kit).



Immunohistochemical analysis of paraffin-embedded rat testis tissue slide using KHC1283 (SRGAP1 IHC Kit).