

IHC*easy* UQCRFS1 Ready-To-Use IHC Kit

Catalog Number: **KHC1275**

General Information

Sample type:
FFPE tissue

Cited sample type:

Reactivity:
Human, Mouse, Rat

Cited Reactivity:

Assay type:
Immunohistochemistry

Primary antibody type:
Rabbit Polyclonal

Secondary antibody type:
Polymer-HRP-Goat anti-Rabbit

Kit Component

Component	Size	Concentration
Antigen Retrieval Buffer	100 mL	50×
Washing Buffer	100 mL ×2	20×
Blocking Buffer	5 mL	RTU
Primary Antibody	5 mL	RTU
Secondary Antibody	5 mL	RTU
Chromogen Component A	0.2 mL	RTU
Chromogen Component B	4 mL	RTU
Signal Enhancer	5 mL	RTU
Counter Staining Reagent	5 mL	RTU
Mounting Media	5 mL	RTU
Control Slide	1 slide (Optional)	FFPE
Datasheet	1 Copy	
Manual	1 Copy	

Storage Instructions

All the reagents are stored at 2-8°C. The kit is stable for 6 months from the date of receipt.

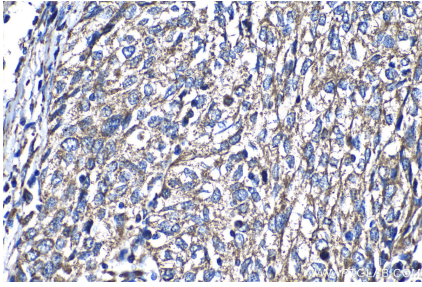
Background

The ubiquinol cytochrome c reductase UQCRFS1 is a key subunit of the cytochrome bc1 complex (complex III) of the mitochondrial respiratory chain. The UQCRFS1 gene encode a 30 kDa protein with a transit peptide and it appears to be involved in development of more aggressive phenotype of breast cancer. UQCRFS1 is also named as RISP, complex III subunit 5, cytochrome b-c1 complex subunit 5 and rieske iron-sulfur protein.

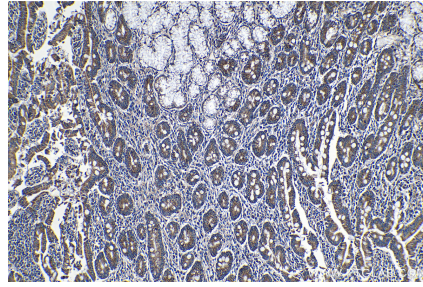
Synonyms

Complex III subunit 5, Complex III subunit IX, Rieske iron sulfur protein, RIP1, RIS1, RISP, UQCR5, UQCRFS1

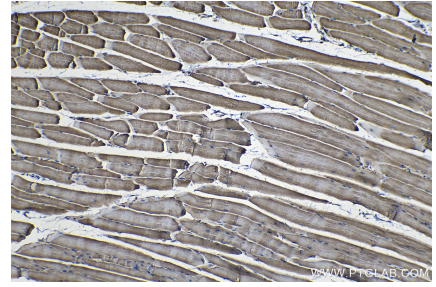
Selected Validation Data



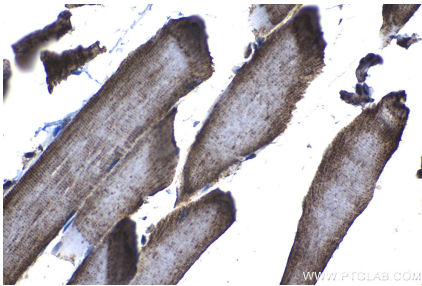
Immunohistochemical analysis of paraffin-embedded human cervical cancer tissue slide using KHC1275 (UQCRFS1 IHC Kit).



Immunohistochemical analysis of paraffin-embedded human stomach cancer tissue slide using KHC1275 (UQCRFS1 IHC Kit).



Immunohistochemical analysis of paraffin-embedded mouse skeletal muscle tissue slide using KHC1275 (UQCRFS1 IHC Kit).



Immunohistochemical analysis of paraffin-embedded rat skeletal muscle tissue slide using KHC1275 (UQCRFS1 IHC Kit).