

IHCeasy[®] ATP1A3 Ready-To-Use IHC Kit

Catalog Number: **KHC1274**

General Information

Sample type:
FFPE tissue
Cited sample type:
Reactivity:
Human, Mouse, Rat
Cited Reactivity:

Assay type:
Immunohistochemistry
Primary antibody type:
Rabbit Polyclonal
Secondary antibody type:
Polymer-HRP-Goat anti-Rabbit

Kit Component

Component	Size	Concentration
Antigen Retrieval Buffer	100 mL	50×
Washing Buffer	100 mL ×2	20×
Blocking Buffer	5 mL	RTU
Primary Antibody	5 mL	RTU
Secondary Antibody	5 mL	RTU
Chromogen Component A	0.2 mL	RTU
Chromogen Component B	4 mL	RTU
Signal Enhancer	5 mL	RTU
Counter Staining Reagent	5 mL	RTU
Mounting Media	5 mL	RTU
Control Slide	1 slide (Optional)	FFPE
Datasheet	1 Copy	
Manual	1 Copy	

Storage Instructions

All the reagents are stored at 2-8°C. The kit is stable for 6 months from the date of receipt.

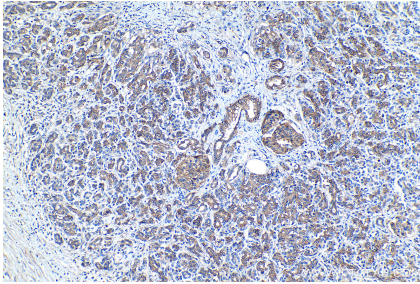
Background

ATP1A3 participates in the catalytic hydrolysis of ATP and the exchanging of sodium and potassium ions across plasma membrane. The catalytic activity mode is $ATP + H_2O + Na^+(In) + K^+(Out) = ADP + phosphate + Na^+(Out) + K^+(In)$. It has been published that the neurologic disorders rapid-onset dystonia-parkinsonism (RDP), alternating hemiplegia of childhood (ACH) and CAPOS syndrome (cerebellar ataxia, areflexia, pes cavus, optic atrophy and sensorineural hearing loss) are all related with the mutation of ATP1A3. There are other reports suggest that early life epilepsy and episodic apnea revealing are potentially associated with the mutation of ATP1A3 as a result of impairment of Na/K homeostasis. Primary antibody in this kit is generated against the C-terminal region (665-1013aa) of ATP1A3.

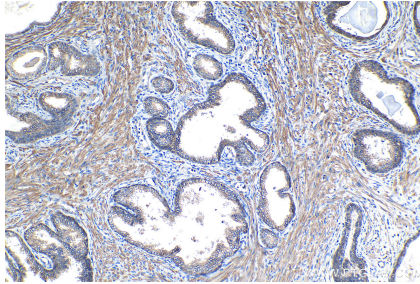
Synonyms

ATP1A3, ATP1A3 (C-terminal), DYT12, RDP, Sodium pump subunit alpha 3

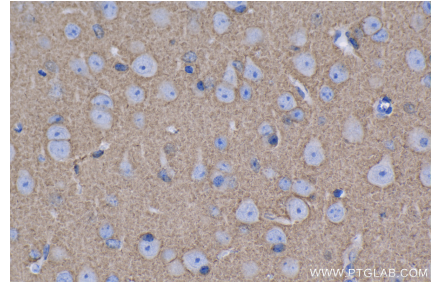
Selected Validation Data



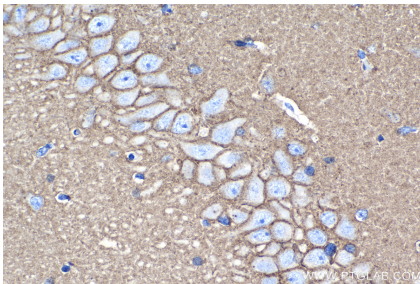
Immunohistochemical analysis of paraffin-embedded human pancreas cancer tissue slide using KHC1274 (ATP1A3 IHC Kit).



Immunohistochemical analysis of paraffin-embedded human prostate cancer tissue slide using KHC1274 (ATP1A3 IHC Kit).



Immunohistochemical analysis of paraffin-embedded mouse brain tissue slide using KHC1274 (ATP1A3 IHC Kit).



Immunohistochemical analysis of paraffin-embedded rat brain tissue slide using KHC1274 (ATP1A3 IHC Kit).