

# IHCeasy<sup>®</sup> KIF26B Ready-To-Use IHC Kit

Catalog Number: **KHC1268**

## General Information

Sample type:  
FFPE tissue  
Cited sample type:  
Reactivity:  
Human, Mouse, Rat  
Cited Reactivity:

Assay type:  
Immunohistochemistry  
Primary antibody type:  
Rabbit Polyclonal  
Secondary antibody type:  
Polymer-HRP-Goat anti-Rabbit

## Kit Component

Component	Size	Concentration
Antigen Retrieval Buffer	100 mL	50×
Washing Buffer	100 mL ×2	20×
Blocking Buffer	5 mL	RTU
Primary Antibody	5 mL	RTU
Secondary Antibody	5 mL	RTU
Chromogen Component A	0.2 mL	RTU
Chromogen Component B	4 mL	RTU
Signal Enhancer	5 mL	RTU
Counter Staining Reagent	5 mL	RTU
Mounting Media	5 mL	RTU
Control Slide	1 slide (Optional)	FFPE
Datasheet	1 Copy	
Manual	1 Copy	

## Storage Instructions

All the reagents are stored at 2-8°C. The kit is stable for 6 months from the date of receipt.

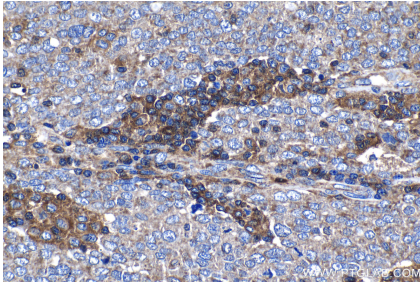
## Background

KIF26B is a member of kinesin-11 family and plays important role in embryogenesis. It is a downstream target of Sall1 and is essential for kidney development. KIF26B is also involved in tumorigenesis.

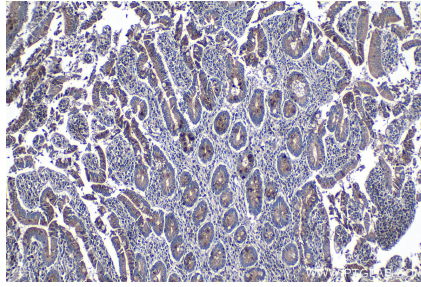
## Synonyms

KIF26B, kinesin family member 26B, Kinesin like protein KIF26B

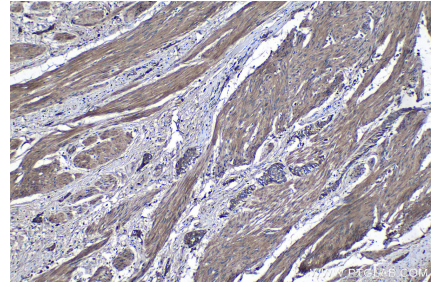
## Selected Validation Data



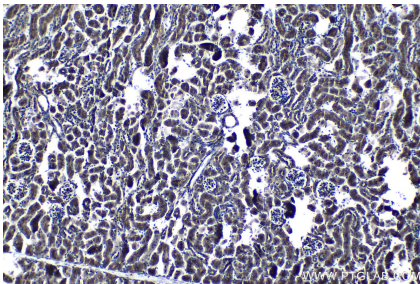
Immunohistochemical analysis of paraffin-embedded human ovary tumor tissue slide using KHC1268 (KIF26B IHC Kit).



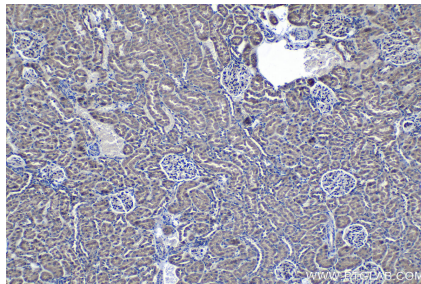
Immunohistochemical analysis of paraffin-embedded human stomach cancer tissue slide using KHC1268 (KIF26B IHC Kit).



Immunohistochemical analysis of paraffin-embedded human urothelial carcinoma tissue slide using KHC1268 (KIF26B IHC Kit).



Immunohistochemical analysis of paraffin-embedded mouse kidney tissue slide using KHC1268 (KIF26B IHC Kit).



Immunohistochemical analysis of paraffin-embedded rat kidney tissue slide using KHC1268 (KIF26B IHC Kit).