

# IHC*easy* PON2 Ready-To-Use IHC Kit

Catalog Number: **KHC1254**

## General Information

Sample type:  
FFPE tissue  
Cited sample type:  
Reactivity:  
Human, Mouse  
Cited Reactivity:

Assay type:  
Immunohistochemistry  
Primary antibody type:  
Rabbit Polyclonal  
Secondary antibody type:  
Polymer-HRP-Goat anti-Rabbit

## Kit Component

Component	Size	Concentration
Antigen Retrieval Buffer	100 mL	50×
Washing Buffer	100 mL ×2	20×
Blocking Buffer	5 mL	RTU
Primary Antibody	5 mL	RTU
Secondary Antibody	5 mL	RTU
Chromogen Component A	0.2 mL	RTU
Chromogen Component B	4 mL	RTU
Signal Enhancer	5 mL	RTU
Counter Staining Reagent	5 mL	RTU
Mounting Media	5 mL	RTU
Control Slide	1 slide (Optional)	FFPE
Datasheet	1 Copy	
Manual	1 Copy	

## Storage Instructions

All the reagents are stored at 2-8°C. The kit is stable for 6 months from the date of receipt.

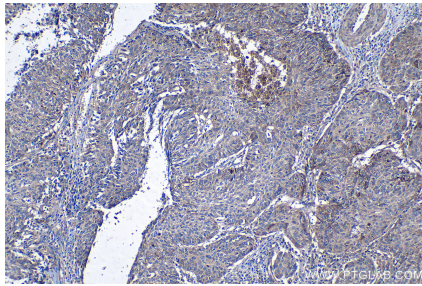
## Background

Highest levels of PON2 protein are found in the mouse lung and small intestine, followed by the heart and liver, while lower levels are present in the testis, kidney and brain. PON2 expression in tissues from female mice is always significantly higher than in male animals.

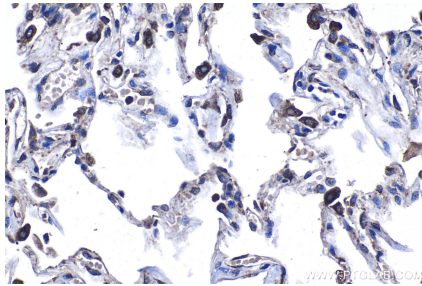
## Synonyms

A esterase 2, Aromatic esterase 2, paraoxonase 2, PON 2, PON2, Serum aryldialkylphosphatase 2

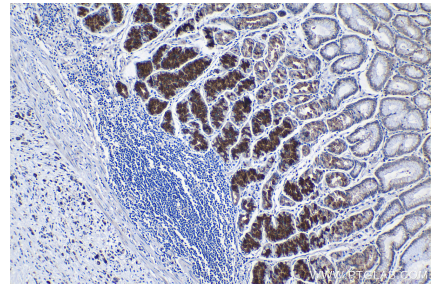
## Selected Validation Data



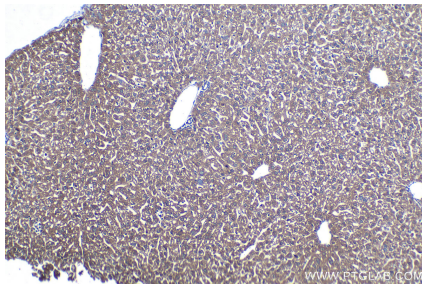
Immunohistochemical analysis of paraffin-embedded human cervical cancer tissue slide using KHC1254 (PON2 IHC Kit).



Immunohistochemical analysis of paraffin-embedded human lung tissue slide using KHC1254 (PON2 IHC Kit).



Immunohistochemical analysis of paraffin-embedded human stomach cancer tissue slide using KHC1254 (PON2 IHC Kit).



Immunohistochemical analysis of paraffin-embedded mouse liver tissue slide using KHC1254 (PON2 IHC Kit).