

IHC*easy* RNF6 Ready-To-Use IHC Kit

Catalog Number: **KHC1243**

General Information

Sample type:
FFPE tissue
Cited sample type:
Reactivity:
Human, Mouse
Cited Reactivity:

Assay type:
Immunohistochemistry
Primary antibody type:
Rabbit Polyclonal
Secondary antibody type:
Polymer-HRP-Goat anti-Rabbit

Kit Component

Component	Size	Concentration
Antigen Retrieval Buffer	100 mL	50×
Washing Buffer	100 mL ×2	20×
Blocking Buffer	5 mL	RTU
Primary Antibody	5 mL	RTU
Secondary Antibody	5 mL	RTU
Chromogen Component A	0.2 mL	RTU
Chromogen Component B	4 mL	RTU
Signal Enhancer	5 mL	RTU
Counter Staining Reagent	5 mL	RTU
Mounting Media	5 mL	RTU
Control Slide	1 slide (Optional)	FFPE
Datasheet	1 Copy	
Manual	1 Copy	

Storage Instructions

All the reagents are stored at 2-8°C. The kit is stable for 6 months from the date of receipt.

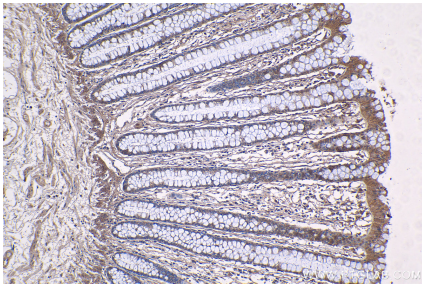
Background

RNF6 was firstly cloned in a genetic study of chromosomal rearrangements in myeloproliferative disorders, mapping to chromosome 13q12.12. It containing a coiled-coil domain at the N-terminus, and a RING-H2 finger at the C-terminus which is responsible for its ubiquitin ligase activity. It also activate Inha gene expression by participating in a protein complex binding to the promoter region. In addition, LIMK1 is a substrate of RNF6 and the RNF6-induced LIMK1 polyubiquitination is mediated via K48 of ubiquitin and leads to proteasomal degradation of the kinase.

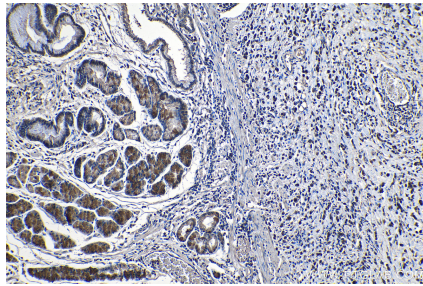
Synonyms

RNF6, SPG2

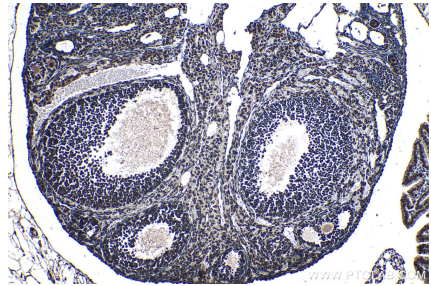
Selected Validation Data



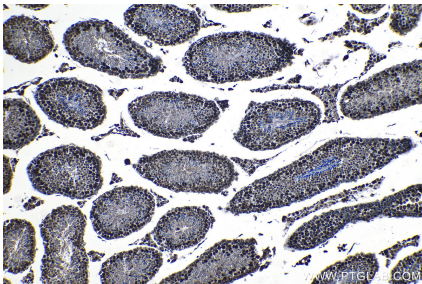
Immunohistochemical analysis of paraffin-embedded human colon tissue slide using KHC1243 (RNF6 IHC Kit).



Immunohistochemical analysis of paraffin-embedded human stomach cancer tissue slide using KHC1243 (RNF6 IHC Kit).



Immunohistochemical analysis of paraffin-embedded mouse ovary tissue slide using KHC1243 (RNF6 IHC Kit).



Immunohistochemical analysis of paraffin-embedded mouse testis tissue slide using KHC1243 (RNF6 IHC Kit).