

IHC*easy* KIF18A Ready-To-Use IHC Kit

Catalog Number: **KHC1223**

General Information

Sample type:
FFPE tissue

Cited sample type:

Reactivity:
Human, Mouse, Rat

Cited Reactivity:

Assay type:
Immunohistochemistry

Primary antibody type:
Rabbit Polyclonal

Secondary antibody type:
Polymer-HRP-Goat anti-Rabbit

Kit Component

Component	Size	Concentration
Antigen Retrieval Buffer	100 mL	50×
Washing Buffer	100 mL ×2	20×
Blocking Buffer	5 mL	RTU
Primary Antibody	5 mL	RTU
Secondary Antibody	5 mL	RTU
Chromogen Component A	0.2 mL	RTU
Chromogen Component B	4 mL	RTU
Signal Enhancer	5 mL	RTU
Counter Staining Reagent	5 mL	RTU
Mounting Media	5 mL	RTU
Control Slide	1 slide (Optional)	FFPE
Datasheet	1 Copy	
Manual	1 Copy	

Storage Instructions

All the reagents are stored at 2-8°C. The kit is stable for 6 months from the date of receipt.

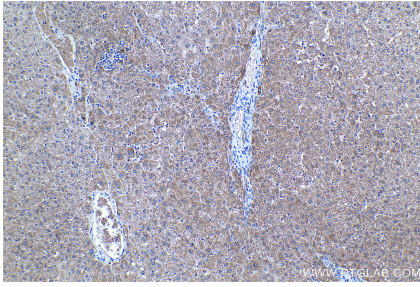
Background

KIF18A belongs to the Kinesin family. KIF18A binds to microtubules and moves along them using energy from ATP hydrolysis. KIF18A is related to the localization of membrane organelles and protein complexes, as well as the maintenance of microtubule dynamics and mitosis. KIF18A expression is low in normal tissues and high in solid tumors, including breast cancer, hepatocellular carcinoma and lung adenocarcinoma, colorectal cancer, renal cell carcinoma, and head and neck squamous cell carcinoma.

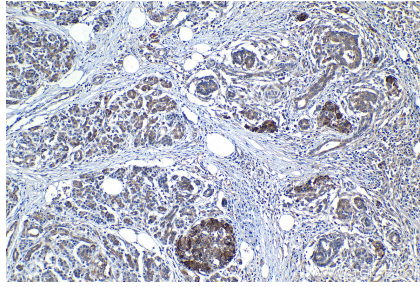
Synonyms

KIF18A, kinesin family member 18A, Kinesin like protein KIF18A, Marrow stromal KIF18A, MS KIF18A

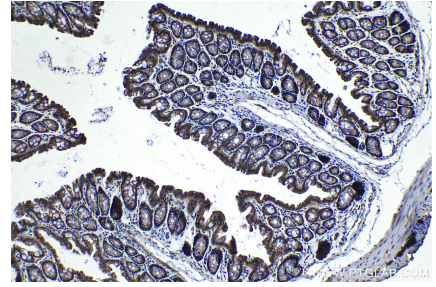
Selected Validation Data



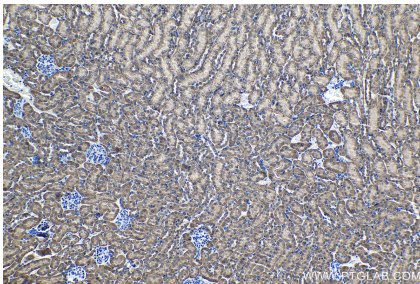
Immunohistochemical analysis of paraffin-embedded human liver tissue slide using KHC1223 (KIF18A IHC Kit).



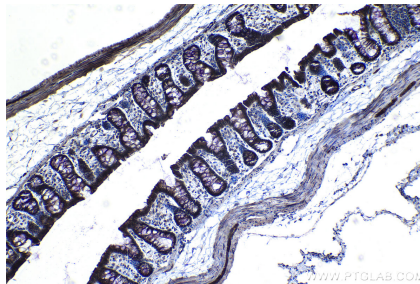
Immunohistochemical analysis of paraffin-embedded human pancreas cancer tissue slide using KHC1223 (KIF18A IHC Kit).



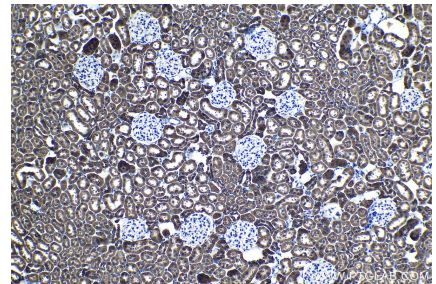
Immunohistochemical analysis of paraffin-embedded mouse colon tissue slide using KHC1223 (KIF18A IHC Kit).



Immunohistochemical analysis of paraffin-embedded mouse kidney tissue slide using KHC1223 (KIF18A IHC Kit).



Immunohistochemical analysis of paraffin-embedded rat colon tissue slide using KHC1223 (KIF18A IHC Kit).



Immunohistochemical analysis of paraffin-embedded rat kidney tissue slide using KHC1223 (KIF18A IHC Kit).