

# IHCeasy<sup>®</sup> TRIM26 Ready-To-Use IHC Kit

Catalog Number: **KHC1216**

## General Information

Sample type:  
FFPE tissue  
Cited sample type:  
Reactivity:  
Human, Mouse, Rat  
Cited Reactivity:

Assay type:  
Immunohistochemistry  
Primary antibody type:  
Rabbit Polyclonal  
Secondary antibody type:  
Polymer-HRP-Goat anti-Rabbit

## Kit Component

Component	Size	Concentration
Antigen Retrieval Buffer	100 mL	50×
Washing Buffer	100 mL ×2	20×
Blocking Buffer	5 mL	RTU
Primary Antibody	5 mL	RTU
Secondary Antibody	5 mL	RTU
Chromogen Component A	0.2 mL	RTU
Chromogen Component B	4 mL	RTU
Signal Enhancer	5 mL	RTU
Counter Staining Reagent	5 mL	RTU
Mounting Media	5 mL	RTU
Control Slide	1 slide (Optional)	FFPE
Datasheet	1 Copy	
Manual	1 Copy	

## Storage Instructions

All the reagents are stored at 2-8°C. The kit is stable for 6 months from the date of receipt.

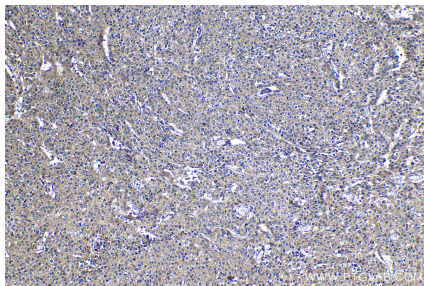
## Background

TRIM26 is a member of the tripartite motif (TRIM) protein family composed of more than 70 members in human. TRIM proteins share a similar characteristic structure, which includes a RING (R) domain, one or two B-boxes (B), and a coiled coil (CC) domain in the N-terminal and a domain in the C-terminal with variable structures. TRIM26 potentiates virus-triggered IRF3, NF- $\kappa$ B activation, IFN- $\beta$  induction, and cellular antiviral responses. Further investigation suggests that TRIM26 plays an important role in the antiviral innate immune response by bridging TBK1 to NEMO and mediating TBK1 activation.

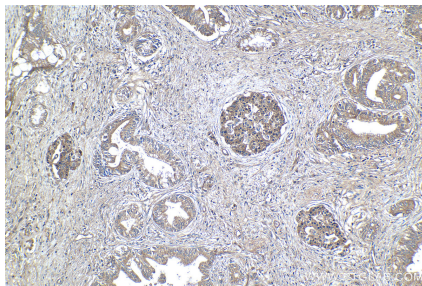
## Synonyms

Acid finger protein, AFP, RING finger protein 95, RNF95, TRIM26, tripartite motif containing 26, Zinc finger protein 173, ZNF173

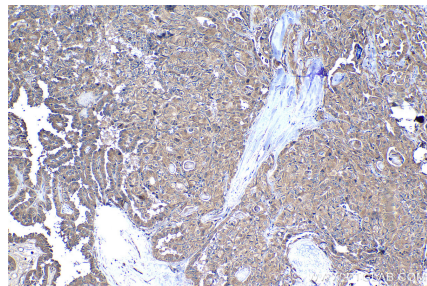
## Selected Validation Data



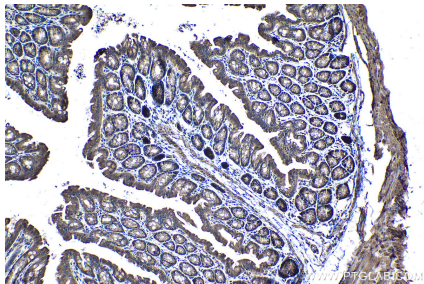
Immunohistochemical analysis of paraffin-embedded human cervical cancer tissue slide using KHC1216 (TRIM26 IHC Kit).



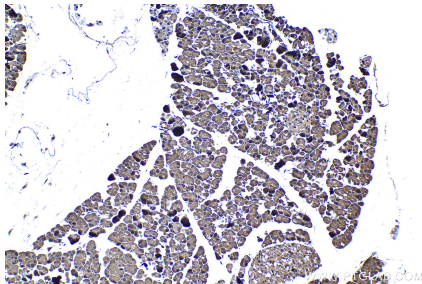
Immunohistochemical analysis of paraffin-embedded human pancreas cancer tissue slide using KHC1216 (TRIM26 IHC Kit).



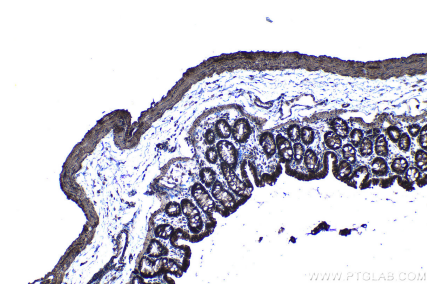
Immunohistochemical analysis of paraffin-embedded human thyroid cancer tissue slide using KHC1216 (TRIM26 IHC Kit).



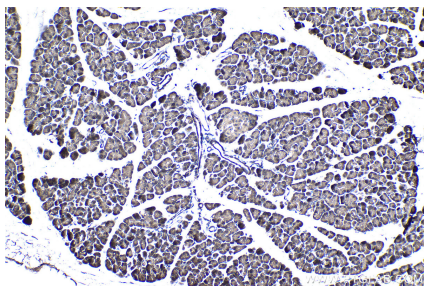
Immunohistochemical analysis of paraffin-embedded mouse colon tissue slide using KHC1216 (TRIM26 IHC Kit).



Immunohistochemical analysis of paraffin-embedded mouse pancreas tissue slide using KHC1216 (TRIM26 IHC Kit).



Immunohistochemical analysis of paraffin-embedded rat colon tissue slide using KHC1216 (TRIM26 IHC Kit).



Immunohistochemical analysis of paraffin-embedded rat pancreas tissue slide using KHC1216 (TRIM26 IHC Kit).