

IHC*easy* RPS20 Ready-To-Use IHC Kit

Catalog Number: **KHC1188**

General Information

Sample type:
FFPE tissue
Cited sample type:
Reactivity:
Human, Mouse, Rat
Cited Reactivity:

Assay type:
Immunohistochemistry
Primary antibody type:
Mouse Monoclonal
Secondary antibody type:
Polymer-HRP-Goat anti-Mouse

Kit Component

Component	Size	Concentration
Antigen Retrieval Buffer	100 mL	50×
Washing Buffer	100 mL ×2	20×
Blocking Buffer	5 mL	RTU
Primary Antibody	5 mL	RTU
Secondary Antibody	5 mL	RTU
Chromogen Component A	0.2 mL	RTU
Chromogen Component B	4 mL	RTU
Signal Enhancer	5 mL	RTU
Counter Staining Reagent	5 mL	RTU
Mounting Media	5 mL	RTU
Control Slide	1 slide (Optional)	FFPE
Datasheet	1 Copy	
Manual	1 Copy	

Storage Instructions

All the reagents are stored at 2-8°C. The kit is stable for 6 months from the date of receipt.

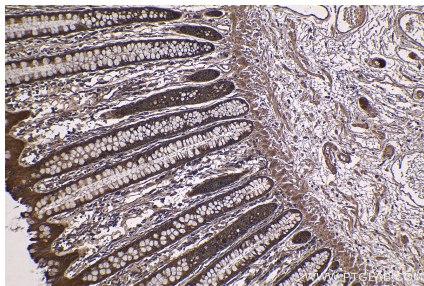
Background

Ribosomes, the organelles that catalyze protein synthesis, consist of a small 40S subunit and a large 60S subunit. Together these subunits are composed of 4 RNA species and approximately 80 structurally distinct proteins. RPS20 is a component of the 40S subunit. The protein belongs to the S10P family of ribosomal proteins. It is located in the cytoplasm.

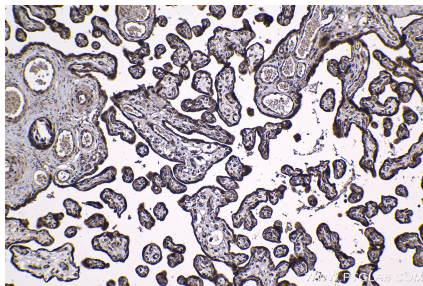
Synonyms

40S ribosomal protein S20, FLJ27451, ribosomal protein S20, RPS20

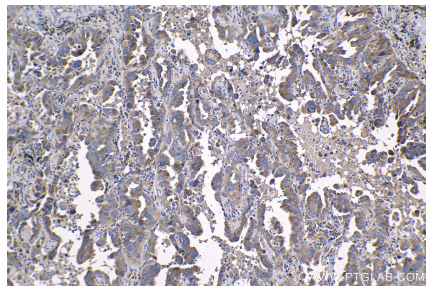
Selected Validation Data



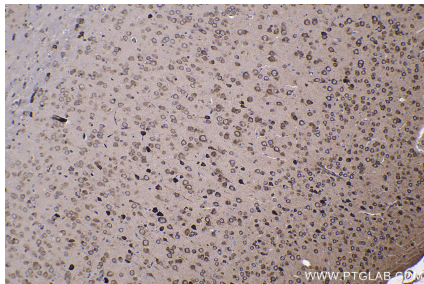
Immunohistochemical analysis of paraffin-embedded human colon tissue slide using KHC1188 (RPS20 IHC Kit).



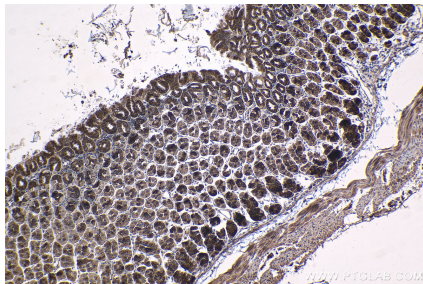
Immunohistochemical analysis of paraffin-embedded human placenta tissue slide using KHC1188 (RPS20 IHC Kit).



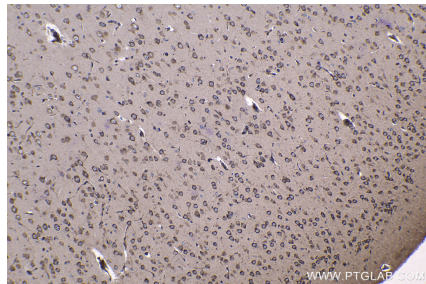
Immunohistochemical analysis of paraffin-embedded human lung cancer tissue slide using KHC1188 (RPS20 IHC Kit).



Immunohistochemical analysis of paraffin-embedded mouse brain tissue slide using KHC1188 (RPS20 IHC Kit).



Immunohistochemical analysis of paraffin-embedded mouse stomach tissue slide using KHC1188 (RPS20 IHC Kit).



Immunohistochemical analysis of paraffin-embedded rat brain tissue slide using KHC1188 (RPS20 IHC Kit).



Immunohistochemical analysis of paraffin-embedded rat stomach tissue slide using KHC1188 (RPS20 IHC Kit).