

IHC*easy* CCM3/PDCD10 Ready-To-Use IHC Kit

Catalog Number: **KHC1174**

General Information

Sample type:
FFPE tissue
Cited sample type:
Reactivity:
Human, Mouse, Rat
Cited Reactivity:

Assay type:
Immunohistochemistry
Primary antibody type:
Rabbit Polyclonal
Secondary antibody type:
Polymer-HRP-Goat anti-Rabbit

Kit Component

Component	Size	Concentration
Antigen Retrieval Buffer	100 mL	50×
Washing Buffer	100 mL ×2	20×
Blocking Buffer	5 mL	RTU
Primary Antibody	5 mL	RTU
Secondary Antibody	5 mL	RTU
Chromogen Component A	0.2 mL	RTU
Chromogen Component B	4 mL	RTU
Signal Enhancer	5 mL	RTU
Counter Staining Reagent	5 mL	RTU
Mounting Media	5 mL	RTU
Control Slide	1 slide (Optional)	FFPE
Datasheet	1 Copy	
Manual	1 Copy	

Storage Instructions

All the reagents are stored at 2-8°C. The kit is stable for 6 months from the date of receipt.

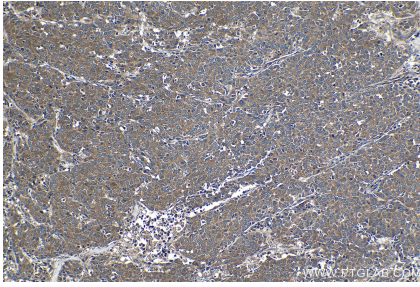
Background

PDCD10, also named CCM3 and TFAR15, belongs to the PDCD10 family. PDCD10 promotes cell proliferation, increases MAPK activity and modulates apoptotic pathways. PDCD10 is important for cell migration and for normal structure and assembly of the Golgi complex. PDCD10 is required for normal angiogenesis, vasculogenesis and hematopoiesis during embryonic development, moreover, defects in PDCD10 showed abnormal cardiovascular development.

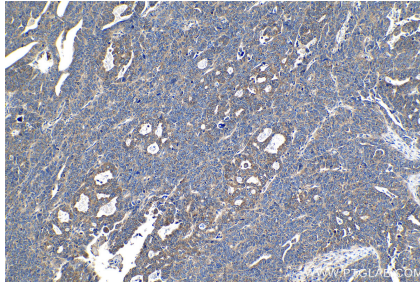
Synonyms

CCM3, CCM3/PDCD10, PDCD10, programmed cell death 10, TFAR15

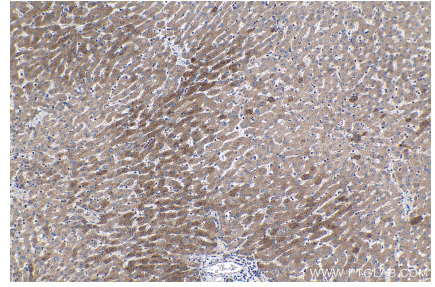
Selected Validation Data



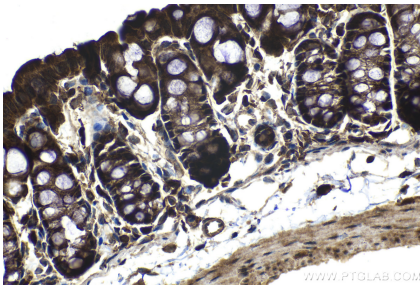
Immunohistochemical analysis of paraffin-embedded human stomach cancer tissue slide using KHC1174 (CCM3/PDCD10 IHC Kit).



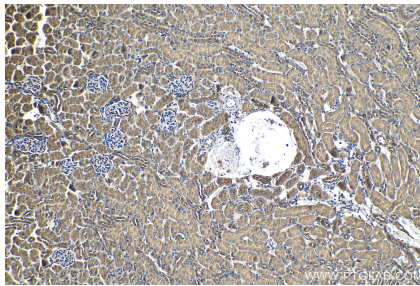
Immunohistochemical analysis of paraffin-embedded human ovary tumor tissue slide using KHC1174 (CCM3/PDCD10 IHC Kit).



Immunohistochemical analysis of paraffin-embedded human liver tissue slide using KHC1174 (CCM3/PDCD10 IHC Kit).



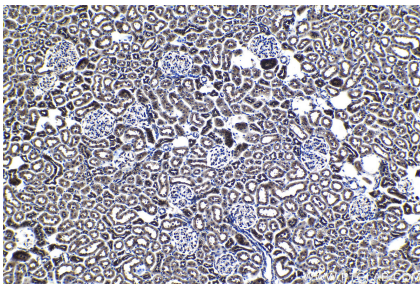
Immunohistochemical analysis of paraffin-embedded mouse colon tissue slide using KHC1174 (CCM3/PDCD10 IHC Kit).



Immunohistochemical analysis of paraffin-embedded mouse kidney tissue slide using KHC1174 (CCM3/PDCD10 IHC Kit).



Immunohistochemical analysis of paraffin-embedded rat colon tissue slide using KHC1174 (CCM3/PDCD10 IHC Kit).



Immunohistochemical analysis of paraffin-embedded rat kidney tissue slide using KHC1174 (CCM3/PDCD10 IHC Kit).