

IHC*easy* DEFA6 Ready-To-Use IHC Kit

Catalog Number: **KHC1169**

General Information

Sample type:
FFPE tissue
Cited sample type:
Reactivity:
Human
Cited Reactivity:

Assay type:
Immunohistochemistry
Primary antibody type:
Rabbit Polyclonal
Secondary antibody type:
Polymer-HRP-Goat anti-Rabbit

Kit Component

Component	Size	Concentration
Antigen Retrieval Buffer	100 mL	50×
Washing Buffer	100 mL ×2	20×
Blocking Buffer	5 mL	RTU
Primary Antibody	5 mL	RTU
Secondary Antibody	5 mL	RTU
Chromogen Component A	0.2 mL	RTU
Chromogen Component B	4 mL	RTU
Signal Enhancer	5 mL	RTU
Counter Staining Reagent	5 mL	RTU
Mounting Media	5 mL	RTU
Control Slide	1 slide (Optional)	FFPE
Datasheet	1 Copy	
Manual	1 Copy	

Storage Instructions

All the reagents are stored at 2-8°C. The kit is stable for 6 months from the date of receipt.

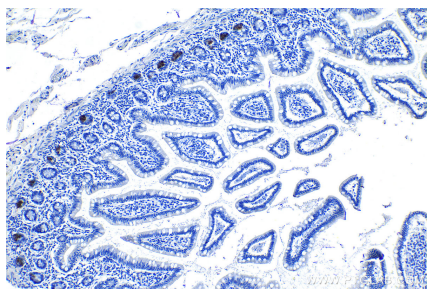
Background

Defensins are a family of antimicrobial and cytotoxic peptides thought to be involved in host defense. DEFA6 is alpha 6 of Defensin. This protein is secret expression and can be cleaved in to the fragments. It can be used as a maker of Paneth cell. DEFA6 has very low antimicrobial activity against Gram-negative and Gram-positive bacteria. it may protect cells against infection with HIV-1.

Synonyms

DEF6, DEFA6, Defensin 6, Defensin, alpha 6, defensin, alpha 6, Paneth cell, HD 6

Selected Validation Data



Immunohistochemical analysis of paraffin-embedded human small intestine tissue slide using KHC1169 (DEFA6 IHC Kit).