

IHC*easy* MYDGF Ready-To-Use IHC Kit

Catalog Number: **KHC1139**

General Information

Sample type:
FFPE tissue
Cited sample type:
Reactivity:
Human, Mouse, Rat
Cited Reactivity:

Assay type:
Immunohistochemistry
Primary antibody type:
Mouse Monoclonal
Secondary antibody type:
Polymer-HRP-Goat anti-Mouse

Kit Component

Component	Size	Concentration
Antigen Retrieval Buffer	100 mL	50×
Washing Buffer	100 mL ×2	20×
Blocking Buffer	5 mL	RTU
Primary Antibody	5 mL	RTU
Secondary Antibody	5 mL	RTU
Chromogen Component A	0.2 mL	RTU
Chromogen Component B	4 mL	RTU
Signal Enhancer	5 mL	RTU
Counter Staining Reagent	5 mL	RTU
Mounting Media	5 mL	RTU
Control Slide	1 slide (Optional)	FFPE
Datasheet	1 Copy	
Manual	1 Copy	

Storage Instructions

All the reagents are stored at 2-8°C. The kit is stable for 6 months from the date of receipt.

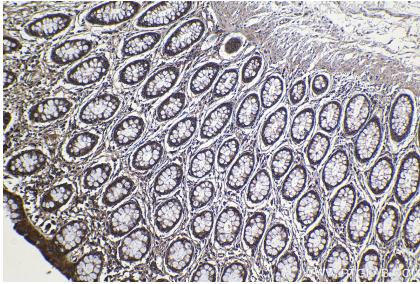
Background

Myeloid-derived growth factor (MYDGF), also named as chromosome 19 open reading frame 10 (C19orf10), is an FLS-derived protein that is secreted into the synovial fluid. MYDGF as a paracrine-acting protein secreted from monocytes/macrophages that improves tissue repair and heart function after myocardial infarction. MYDGF has been reported to regulates neutrophil motility in interstitial tissue damage.

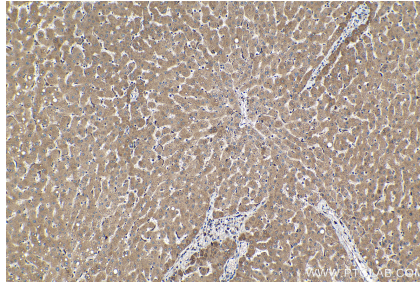
Synonyms

C19orf10, EUROIMAGE1875335, MYDGF, R33729_1, SF20, UPF0556 protein C19orf10

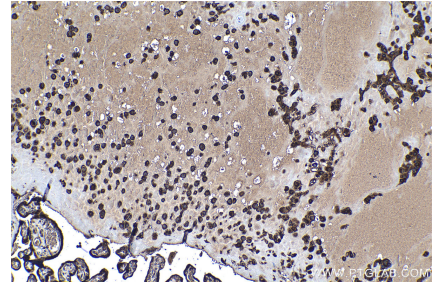
Selected Validation Data



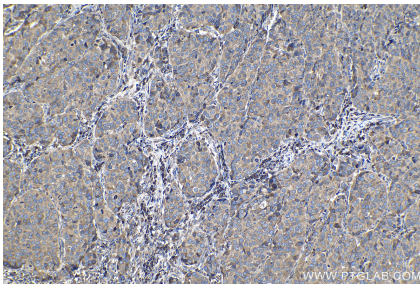
Immunohistochemical analysis of paraffin-embedded human colon tissue slide using KHC1139 (MYDGF IHC Kit).



Immunohistochemical analysis of paraffin-embedded human liver tissue slide using KHC1139 (MYDGF IHC Kit).



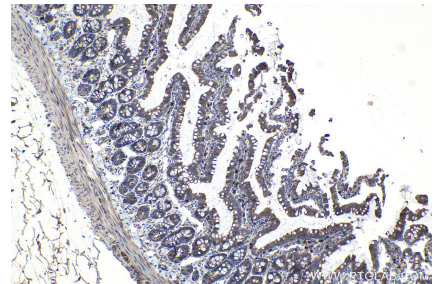
Immunohistochemical analysis of paraffin-embedded human placenta tissue slide using KHC1139 (MYDGF IHC Kit).



Immunohistochemical analysis of paraffin-embedded human stomach cancer tissue slide using KHC1139 (MYDGF IHC Kit).



Immunohistochemical analysis of paraffin-embedded mouse small intestine tissue slide using KHC1139 (MYDGF IHC Kit).



Immunohistochemical analysis of paraffin-embedded rat small intestine tissue slide using KHC1139 (MYDGF IHC Kit).