

IHC*easy* HSPA6 Ready-To-Use IHC Kit

Catalog Number: **KHC1134**

General Information

Sample type: FFPE tissue	Assay type: Immunohistochemistry
Cited sample type:	Primary antibody type: Mouse Monoclonal
Reactivity: Human	Secondary antibody type: Polymer-HRP-Goat anti-Mouse
Cited Reactivity:	

Kit Component

Component	Size	Concentration
Antigen Retrieval Buffer	100 mL	50×
Washing Buffer	100 mL ×2	20×
Blocking Buffer	5 mL	RTU
Primary Antibody	5 mL	RTU
Secondary Antibody	5 mL	RTU
Chromogen Component A	0.2 mL	RTU
Chromogen Component B	4 mL	RTU
Signal Enhancer	5 mL	RTU
Counter Staining Reagent	5 mL	RTU
Mounting Media	5 mL	RTU
Control Slide	1 slide (Optional)	FFPE
Datasheet	1 Copy	
Manual	1 Copy	

Storage Instructions

All the reagents are stored at 2-8°C. The kit is stable for 6 months from the date of receipt.

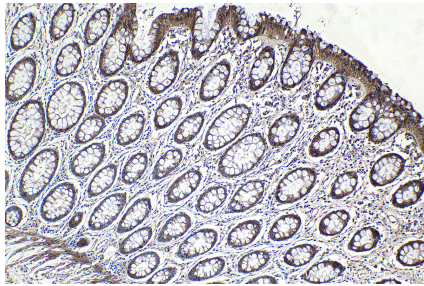
Background

HSPA6 (also known as HSP70B) is a member of the HSPA (HSP70) family of heat-shock proteins which are highly conserved chaperons implicated in protein folding, protein refolding, protein transport, and protein targeting. Human HSP70B is known to be strictly inducible and shows very low or no basal expression levels in most cells. HSPA6 induction has been exploited as a reasonable biomarker of cellular stresses and its mRNA expression levels have been shown to be significantly induced against a variety of cellular stresses. Primary antibody in this kit was raised against the C-terminal region of human HSPA6 and it may cross-react with HSPA1 (HSP70), HSPA1L and HSPA2.

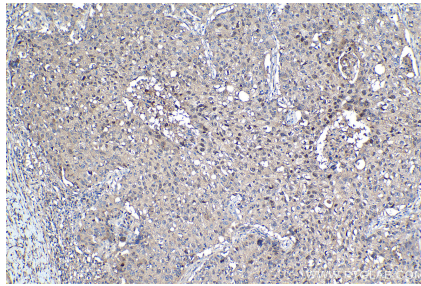
Synonyms

Heat shock 70 kDa protein 6, Heat shock 70 kDa protein B, HSP70B, HSPA6

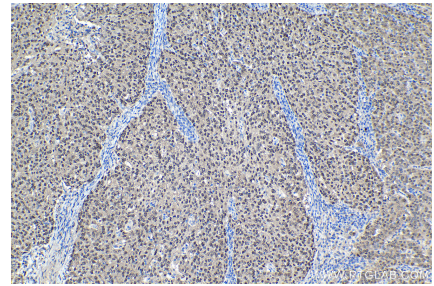
Selected Validation Data



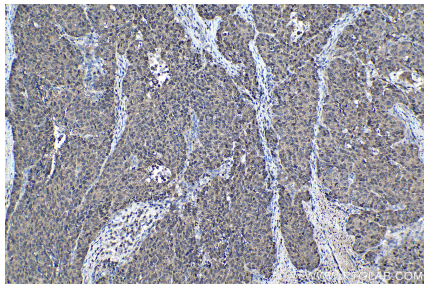
Immunohistochemical analysis of paraffin-embedded human colon tissue slide using KHC1134 (HSPA6 IHC Kit).



Immunohistochemical analysis of paraffin-embedded human lung cancer tissue slide using KHC1134 (HSPA6 IHC Kit).



Immunohistochemical analysis of paraffin-embedded human ovary tumor tissue slide using KHC1134 (HSPA6 IHC Kit).



Immunohistochemical analysis of paraffin-embedded human stomach cancer tissue slide using KHC1134 (HSPA6 IHC Kit).