

IHC*easy* ELAC2 Ready-To-Use IHC Kit

Catalog Number: **KHC1107**

General Information

Sample type:
FFPE tissue
Cited sample type:
Reactivity:
Human, Mouse, Rat
Cited Reactivity:

Assay type:
Immunohistochemistry
Primary antibody type:
Rabbit Polyclonal
Secondary antibody type:
Polymer-HRP-Goat anti-Rabbit

Kit Component

Component	Size	Concentration
Antigen Retrieval Buffer	100 mL	50×
Washing Buffer	100 mL ×2	20×
Blocking Buffer	5 mL	RTU
Primary Antibody	5 mL	RTU
Secondary Antibody	5 mL	RTU
Chromogen Component A	0.2 mL	RTU
Chromogen Component B	4 mL	RTU
Signal Enhancer	5 mL	RTU
Counter Staining Reagent	5 mL	RTU
Mounting Media	5 mL	RTU
Control Slide	1 slide (Optional)	FFPE
Datasheet	1 Copy	
Manual	1 Copy	

Storage Instructions

All the reagents are stored at 2-8°C. The kit is stable for 6 months from the date of receipt.

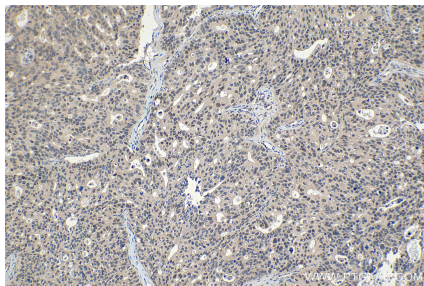
Background

Putative prostate cancer susceptibility protein (ELAC2) is encoded by HPC2/ELAC2 gene. HPC2 is a potential prostate cancer predisposition gene playing a role in genetic susceptibility to prostate cancer. It is a zinc phosphodiesterase, which displays some tRNA 3'-processing endonuclease activity and probably involved in tRNA maturation, by removing a 3'-trailer from precursor tRNA. Defects in ELAC2 may be a cause of susceptibility to prostate cancer (PC).

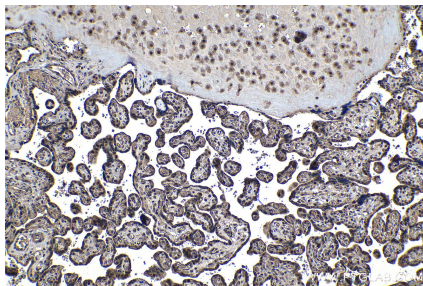
Synonyms

elaC homolog 2 (E. coli), ElaC homolog protein 2, ELAC2, ELC2, HPC2, Ribonuclease Z 2, RNase Z 2, tRNA 3 endonuclease 2, tRNase Z 2

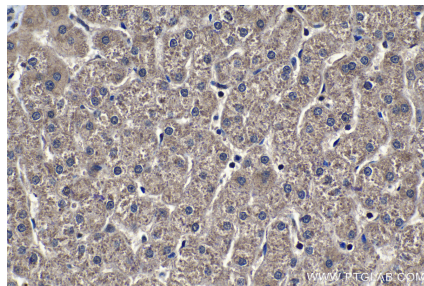
Selected Validation Data



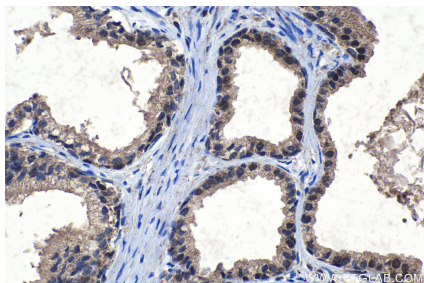
Immunohistochemical analysis of paraffin-embedded human ovary tumor tissue slide using KHC1107 (ELAC2 IHC Kit).



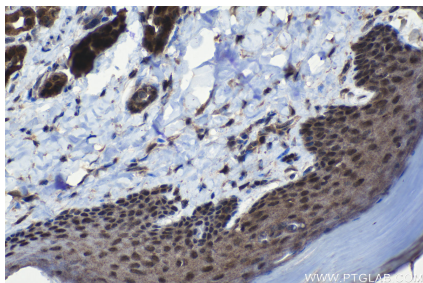
Immunohistochemical analysis of paraffin-embedded human placenta tissue slide using KHC1107 (ELAC2 IHC Kit).



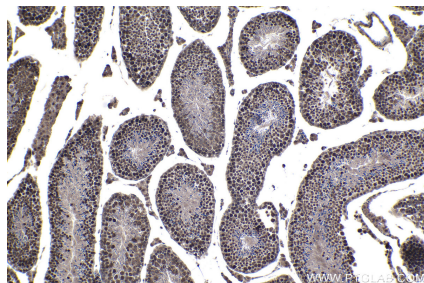
Immunohistochemical analysis of paraffin-embedded human liver tissue slide using KHC1107 (ELAC2 IHC Kit).



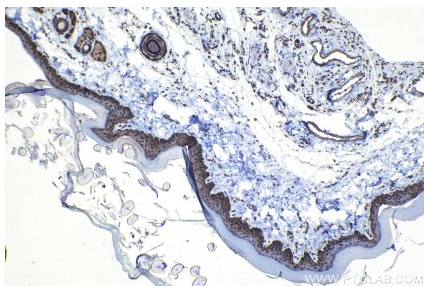
Immunohistochemical analysis of paraffin-embedded human prostate cancer tissue slide using KHC1107 (ELAC2 IHC Kit).



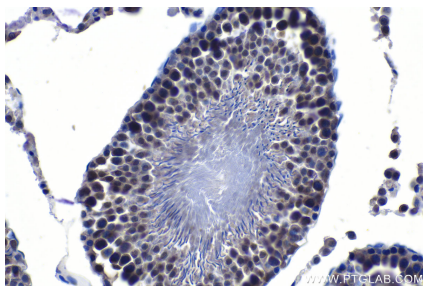
Immunohistochemical analysis of paraffin-embedded mouse skin tissue slide using KHC1107 (ELAC2 IHC Kit).



Immunohistochemical analysis of paraffin-embedded mouse testis tissue slide using KHC1107 (ELAC2 IHC Kit).



Immunohistochemical analysis of paraffin-embedded rat skin tissue slide using KHC1107 (ELAC2 IHC Kit).



Immunohistochemical analysis of paraffin-embedded rat testis tissue slide using KHC1107 (ELAC2 IHC Kit).