

IHC*easy* KLK2 Ready-To-Use IHC Kit

Catalog Number: **KHC1104**

General Information

Sample type:
FFPE tissue
Cited sample type:
Reactivity:
Human
Cited Reactivity:

Assay type:
Immunohistochemistry
Primary antibody type:
Rabbit Polyclonal
Secondary antibody type:
Polymer-HRP-Goat anti-Rabbit

Kit Component

Component	Size	Concentration
Antigen Retrieval Buffer	100 mL	50×
Washing Buffer	100 mL ×2	20×
Blocking Buffer	5 mL	RTU
Primary Antibody	5 mL	RTU
Secondary Antibody	5 mL	RTU
Chromogen Component A	0.2 mL	RTU
Chromogen Component B	4 mL	RTU
Signal Enhancer	5 mL	RTU
Counter Staining Reagent	5 mL	RTU
Mounting Media	5 mL	RTU
Control Slide	1 slide (Optional)	FFPE
Datasheet	1 Copy	
Manual	1 Copy	

Storage Instructions

All the reagents are stored at 2-8°C. The kit is stable for 6 months from the date of receipt.

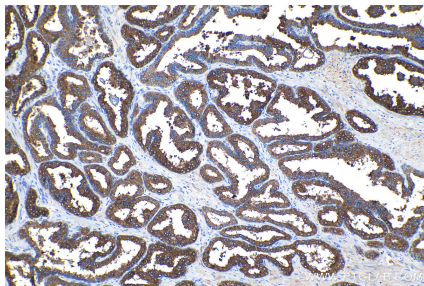
Background

KLK2(Kallikrein-2) is also named as hGK-1 and belongs to the Kallikrein subfamily. It plays a role in prostate cancer susceptibility and this role may be realized at least in part by the induction of increases in its production. It also may mediate tumor growth and invasion by participating in proteolytic cascades.

Synonyms

Glandular kallikrein 1, hGK 1, hK2, Kallikrein 2, kallikrein related peptidase 2, KLK2, KLK2A2, Tissue kallikrein 2

Selected Validation Data



Immunohistochemical analysis of paraffin-embedded human prostate hyperplasia tissue slide using KHC1104 (KLK2 IHC Kit).