

IHC*easy* HNF1B Ready-To-Use IHC Kit

Catalog Number: **KHC1100**

General Information

Sample type:
FFPE tissue

Cited sample type:

Reactivity:
Human, Mouse, Rat

Cited Reactivity:

Assay type:
Immunohistochemistry

Primary antibody type:
Rabbit Polyclonal

Secondary antibody type:
Polymer-HRP-Goat anti-Rabbit

Kit Component

Component	Size	Concentration
Antigen Retrieval Buffer	100 mL	50×
Washing Buffer	100 mL ×2	20×
Blocking Buffer	5 mL	RTU
Primary Antibody	5 mL	RTU
Secondary Antibody	5 mL	RTU
Chromogen Component A	0.2 mL	RTU
Chromogen Component B	4 mL	RTU
Signal Enhancer	5 mL	RTU
Counter Staining Reagent	5 mL	RTU
Mounting Media	5 mL	RTU
Control Slide	1 slide (Optional)	FFPE
Datasheet	1 Copy	
Manual	1 Copy	

Storage Instructions

All the reagents are stored at 2-8°C. The kit is stable for 6 months from the date of receipt.

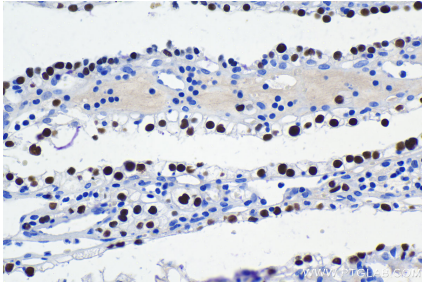
Background

Hepatocyte nuclear factor-1-beta(HNF1B), or transcription factor-2(TCF2), is a member of the homeodomain-containing superfamily of transcription factors. Early expression of HNF1B is seen in the kidney, liver, pancreas, thymus, lung, gut and genital tract. HNF1B can be a homodimer or a heterodimer with HNF1A. It's a transcription factor, probably by binding to the inverted palindrome 5'-GTTAATNATTAAC-3', and as a bookmarking factor that marks target genes for rapid transcriptional reactivation after mitosis.

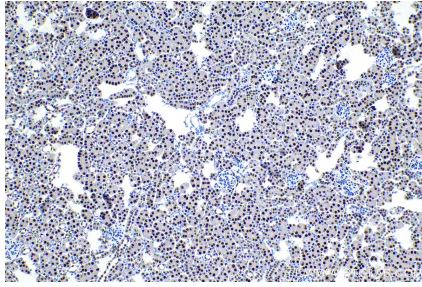
Synonyms

FJHN, HNF 1 beta, HNF 1B, HNF1 homeobox B, HNF1B, HNF1beta, HNF2, Homeoprotein LFB3, HPC11, LFB3, LFB3, MODY5, TCF 2, TCF2, Transcription factor 2, VHNF1

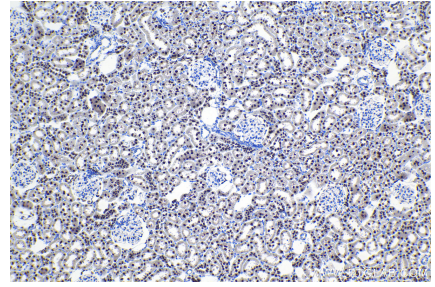
Selected Validation Data



Immunohistochemical analysis of paraffin-embedded human renal cell carcinoma tissue slide using KHC1100 (HNF1B IHC Kit).



Immunohistochemical analysis of paraffin-embedded mouse kidney tissue slide using KHC1100 (HNF1B IHC Kit).



Immunohistochemical analysis of paraffin-embedded rat kidney tissue slide using KHC1100 (HNF1B IHC Kit).