

# IHCeasy<sup>®</sup> PLUNC Ready-To-Use IHC Kit

Catalog Number: **KHC1090**

## General Information

Sample type:  
FFPE tissue  
Cited sample type:  
Reactivity:  
Human, Mouse, Rat  
Cited Reactivity:

Assay type:  
Immunohistochemistry  
Primary antibody type:  
Rabbit Polyclonal  
Secondary antibody type:  
Polymer-HRP-Goat anti-Rabbit

## Kit Component

Component	Size	Concentration
Antigen Retrieval Buffer	100 mL	50×
Washing Buffer	100 mL ×2	20×
Blocking Buffer	5 mL	RTU
Primary Antibody	5 mL	RTU
Secondary Antibody	5 mL	RTU
Chromogen Component A	0.2 mL	RTU
Chromogen Component B	4 mL	RTU
Signal Enhancer	5 mL	RTU
Counter Staining Reagent	5 mL	RTU
Mounting Media	5 mL	RTU
Control Slide	1 slide (Optional)	FFPE
Datasheet	1 Copy	
Manual	1 Copy	

## Storage Instructions

All the reagents are stored at 2-8°C. The kit is stable for 6 months from the date of receipt.

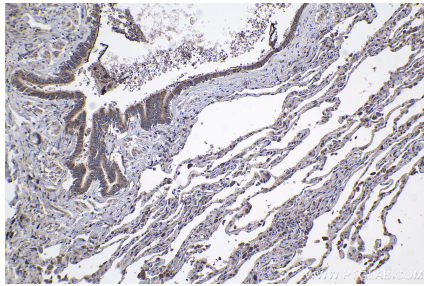
## Background

PLUNC, also named as LUNX, NASG and SPURT, belongs to the BPI/LBP/Plunc superfamily and Plunc family. PLUNC may be involved in the airway inflammatory response after exposure to irritants. It is associated with tumor progression. PLUNC plays a role in innate immune responses of the upper airways.

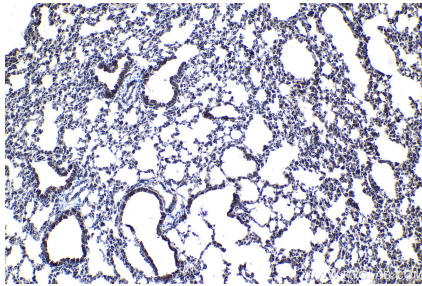
## Synonyms

BPIFA1, LPLUNC3, Lung specific protein X, LUNX, NASG, PLUNC, Protein Plunc, SPLUNC1, SPURT, Von Ebner protein HL

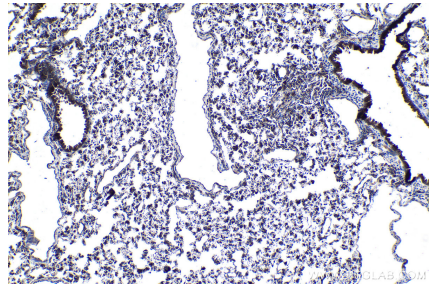
## Selected Validation Data



Immunohistochemical analysis of paraffin-embedded human lung tissue slide using KHC1090 (PLUNC IHC Kit).



Immunohistochemical analysis of paraffin-embedded mouse lung tissue slide using KHC1090 (PLUNC IHC Kit).



Immunohistochemical analysis of paraffin-embedded rat lung tissue slide using KHC1090 (PLUNC IHC Kit).