

IHC*easy* FOXP1 Ready-To-Use IHC Kit

Catalog Number: **KHC1063**

General Information

Sample type:
FFPE tissue
Cited sample type:
Reactivity:
Human, Mouse
Cited Reactivity:

Assay type:
Immunohistochemistry
Primary antibody type:
Rabbit Polyclonal
Secondary antibody type:
Polymer-HRP-Goat anti-Rabbit

Kit Component

Component	Size	Concentration
Antigen Retrieval Buffer	100 mL	50×
Washing Buffer	100 mL ×2	20×
Blocking Buffer	5 mL	RTU
Primary Antibody	5 mL	RTU
Secondary Antibody	5 mL	RTU
Chromogen Component A	0.2 mL	RTU
Chromogen Component B	4 mL	RTU
Signal Enhancer	5 mL	RTU
Counter Staining Reagent	5 mL	RTU
Mounting Media	5 mL	RTU
Control Slide	1 slide (Optional)	FFPE
Datasheet	1 Copy	
Manual	1 Copy	

Storage Instructions

All the reagents are stored at 2-8°C. The kit is stable for 6 months from the date of receipt.

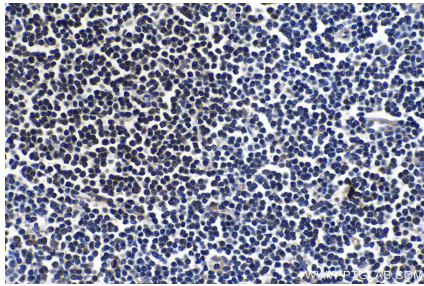
Background

FOXP1, also known as Mac-1-regulated forkhead, is a 677 amino acid protein, which forms homodimers and heterodimers with FOXP2 and FOXP4. Dimerization is required for DNA-binding. FOXP1 has an important function in neuronal development.⁹ Mutations of its gene, FOXP1, located on chromosome 3p14.1, can result in the development of autism spectrum disorder, intellectual disability, speech and language deficits as well as motor development delay. FOXP1 is also engaged in lung and esophagus morphogenesis, as well as in B-cell development.^{7,10} The widely researched role of FOXP1 in carcinogenesis is of great importance, although still unclear to some extent.

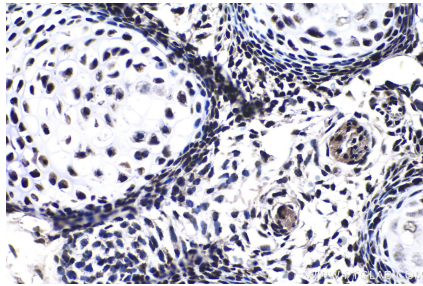
Synonyms

12CC4, forkhead box P1, Forkhead box protein P1, FOXP1, hFKH1B, HSPC215, QRF1

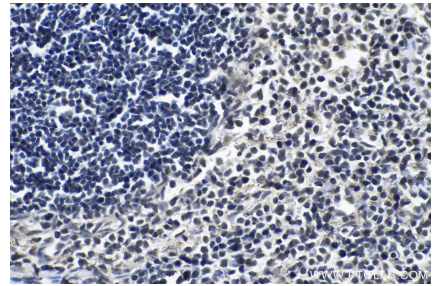
Selected Validation Data



Immunohistochemical analysis of paraffin-embedded human lymphoma tissue slide using KHC1063 (FOXP1 IHC Kit).



Immunohistochemical analysis of paraffin-embedded mouse embryo tissue slide using KHC1063 (FOXP1 IHC Kit).



Immunohistochemical analysis of paraffin-embedded mouse spleen tissue slide using KHC1063 (FOXP1 IHC Kit).