

IHC*easy* IGFBP7 Ready-To-Use IHC Kit

Catalog Number: **KHC1051**

General Information

Sample type:
FFPE tissue

Cited sample type:

Reactivity:
Human, Mouse, Rat

Cited Reactivity:

Assay type:
Immunohistochemistry

Primary antibody type:
Rabbit Polyclonal

Secondary antibody type:
Polymer-HRP-Goat anti-Rabbit

Kit Component

Component	Size	Concentration
Antigen Retrieval Buffer	100 mL	50×
Washing Buffer	100 mL ×2	20×
Blocking Buffer	5 mL	RTU
Primary Antibody	5 mL	RTU
Secondary Antibody	5 mL	RTU
Chromogen Component A	0.2 mL	RTU
Chromogen Component B	4 mL	RTU
Signal Enhancer	5 mL	RTU
Counter Staining Reagent	5 mL	RTU
Mounting Media	5 mL	RTU
Control Slide	1 slide (Optional)	FFPE
Datasheet	1 Copy	
Manual	1 Copy	

Storage Instructions

All the reagents are stored at 2-8°C. The kit is stable for 6 months from the date of receipt.

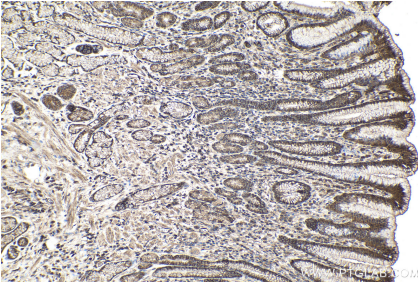
Background

IGFBP7, also named as MAC25, PSF, IBP-7 and TAF, binds IGF-I and IGF-II with a relatively low affinity. IGFBP7 stimulates prostacyclin (PGI₂) production. IGFBP7 stimulates cell adhesion.

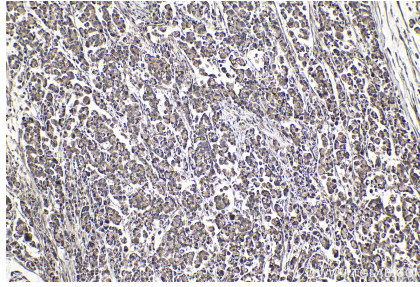
Synonyms

FSTL2, IBP 7, IGF binding protein 7, IGFBP 7, IGFBP 7v, IGFBP rP1, IGFBP7, IGFBPRP1, MAC25, MAC25 protein, PGI₂ stimulating factor, PSF, TAF, Tumor derived adhesion factor

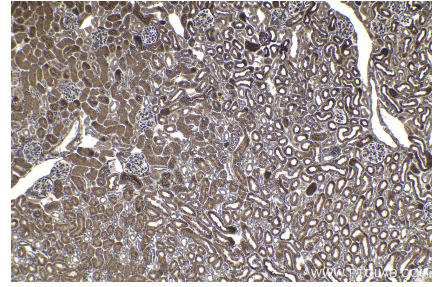
Selected Validation Data



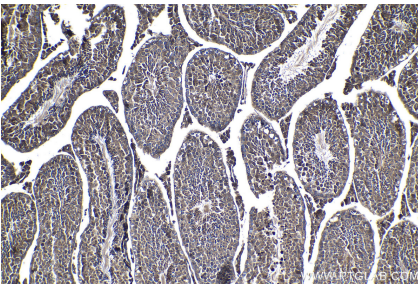
Immunohistochemical analysis of paraffin-embedded human stomach cancer tissue slide using KHC1051 (IGFBP7 IHC Kit).



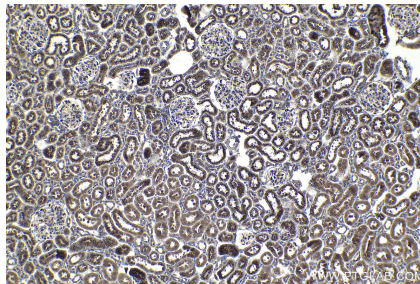
Immunohistochemical analysis of paraffin-embedded human colon cancer tissue slide using KHC1051 (IGFBP7 IHC Kit).



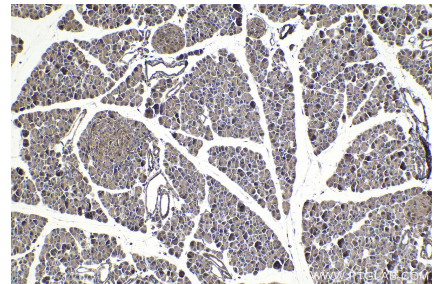
Immunohistochemical analysis of paraffin-embedded mouse kidney tissue slide using KHC1051 (IGFBP7 IHC Kit).



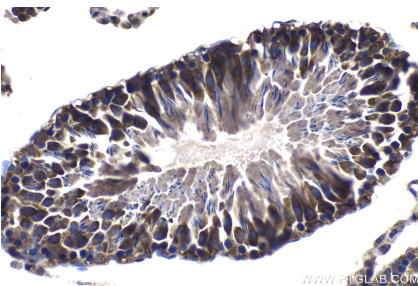
Immunohistochemical analysis of paraffin-embedded mouse testis tissue slide using KHC1051 (IGFBP7 IHC Kit).



Immunohistochemical analysis of paraffin-embedded rat kidney tissue slide using KHC1051 (IGFBP7 IHC Kit).



Immunohistochemical analysis of paraffin-embedded rat pancreas tissue slide using KHC1051 (IGFBP7 IHC Kit).



Immunohistochemical analysis of paraffin-embedded rat testis tissue slide using KHC1051 (IGFBP7 IHC Kit).