

IHC*easy* YPEL5 Ready-To-Use IHC Kit

Catalog Number: **KHC1012**

General Information

Sample type:
FFPE tissue
Cited sample type:
Reactivity:
Human, Mouse, Rat
Cited Reactivity:

Assay type:
Immunohistochemistry
Primary antibody type:
Rabbit Polyclonal
Secondary antibody type:
Polymer-HRP-Goat anti-Rabbit

Kit Component

Component	Size	Concentration
Antigen Retrieval Buffer	100 mL	50×
Washing Buffer	100 mL ×2	20×
Blocking Buffer	5 mL	RTU
Primary Antibody	5 mL	RTU
Secondary Antibody	5 mL	RTU
Chromogen Component A	0.2 mL	RTU
Chromogen Component B	4 mL	RTU
Signal Enhancer	5 mL	RTU
Counter Staining Reagent	5 mL	RTU
Mounting Media	5 mL	RTU
Control Slide	1 slide (Optional)	FFPE
Datasheet	1 Copy	
Manual	1 Copy	

Storage Instructions

All the reagents are stored at 2-8°C. The kit is stable for 6 months from the date of receipt.

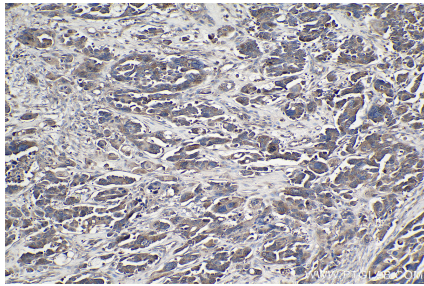
Background

YPEL5(Protein yippee-like 5) belongs to the yippee family and is involved in a certain cell division-related function. During cell cycle, YPEL5 protein is detected at different subcellular localizations; at interphase, it is located in the nucleus and centrosome, then it changes location sequentially to spindle poles, mitotic spindle, and spindle midzone during mitosis, and finally transfers to midbody at cytokinesis.

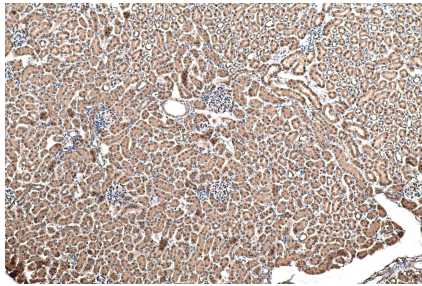
Synonyms

CGI 127, Protein yippee like 5, yippee like 5 (Drosophila), YPEL5

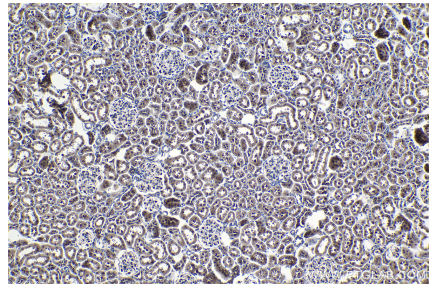
Selected Validation Data



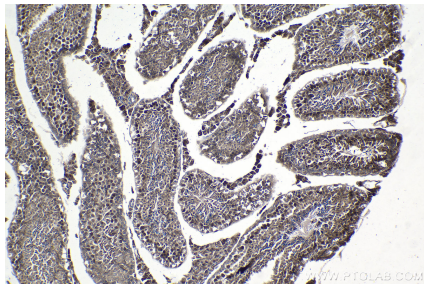
Immunohistochemical analysis of paraffin-embedded human colon cancer tissue slide using KHC1012 (YPEL5 IHC Kit).



Immunohistochemical analysis of paraffin-embedded mouse kidney tissue slide using KHC1012 (YPEL5 IHC Kit).



Immunohistochemical analysis of paraffin-embedded rat kidney tissue slide using KHC1012 (YPEL5 IHC Kit).



Immunohistochemical analysis of paraffin-embedded mouse testis tissue slide using KHC1012 (YPEL5 IHC Kit).