

IHC*easy* MYBBP1A Ready-To-Use IHC Kit

Catalog Number: **KHC1011**

General Information

Sample type:
FFPE tissue

Cited sample type:

Reactivity:
Human, Mouse, Rat

Cited Reactivity:

Assay type:
Immunohistochemistry

Primary antibody type:
Rabbit Polyclonal

Secondary antibody type:
Polymer-HRP-Goat anti-Rabbit

Kit Component

Component	Size	Concentration
Antigen Retrieval Buffer	100 mL	50×
Washing Buffer	100 mL ×2	20×
Blocking Buffer	5 mL	RTU
Primary Antibody	5 mL	RTU
Secondary Antibody	5 mL	RTU
Chromogen Component A	0.2 mL	RTU
Chromogen Component B	4 mL	RTU
Signal Enhancer	5 mL	RTU
Counter Staining Reagent	5 mL	RTU
Mounting Media	5 mL	RTU
Control Slide	1 slide (Optional)	FFPE
Datasheet	1 Copy	
Manual	1 Copy	

Storage Instructions

All the reagents are stored at 2-8°C. The kit is stable for 6 months from the date of receipt.

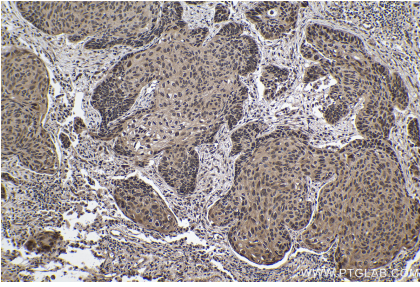
Background

The protooncogene MYB is predominantly expressed in immature hemopoietic cells where it has an essential role in hemopoietic cell proliferation and differentiation. Oncogenically activated forms of MYB is generally N- and/or C-terminal truncations of the normal MYB protein. Removal of the C terminus of MYB disrupts or deletes a region termed the negative regulatory domain (NRD), resulting in an increase in DNA binding, transactivation, and transformation by MYB. One feature of the NRD is a leucine zipper-like motif. Murine Myb-binding protein-1a (MYBBP1A), originally called P160, was identified by its ability to interact specifically with Myb via this leucine zipper-like motif. MYBBP1A modulates MYB activity upon binding to the MYB NRD.

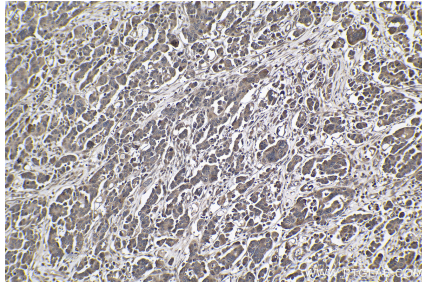
Synonyms

MYB binding protein (P160) 1a, Myb binding protein 1A, MYBBP1A, P160, PAP2

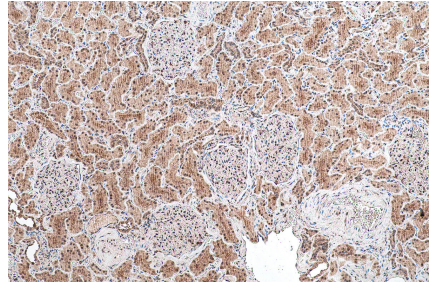
Selected Validation Data



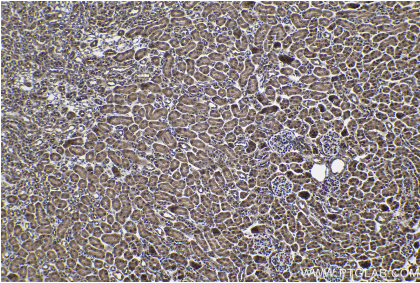
Immunohistochemical analysis of paraffin-embedded human lung cancer tissue slide using KHC1011 (MYBBP1A IHC Kit).



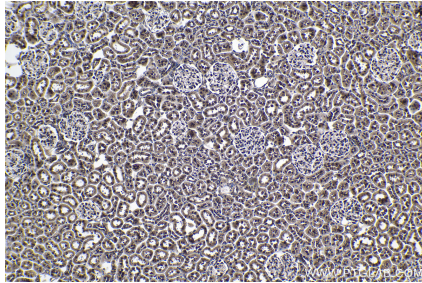
Immunohistochemical analysis of paraffin-embedded human colon cancer tissue slide using KHC1011 (MYBBP1A IHC Kit).



Immunohistochemical analysis of paraffin-embedded human kidney tissue slide using KHC1011 (MYBBP1A IHC Kit).



Immunohistochemical analysis of paraffin-embedded mouse kidney tissue slide using KHC1011 (MYBBP1A IHC Kit).



Immunohistochemical analysis of paraffin-embedded rat kidney tissue slide using KHC1011 (MYBBP1A IHC Kit).