

IHC*easy* GGH Ready-To-Use IHC Kit

Catalog Number: **KHC0998**

General Information

Sample type:
FFPE tissue
Cited sample type:
Reactivity:
Human
Cited Reactivity:

Assay type:
Immunohistochemistry
Primary antibody type:
Rabbit Polyclonal
Secondary antibody type:
Polymer-HRP-Goat anti-Rabbit

Kit Component

Component	Size	Concentration
Antigen Retrieval Buffer	100 mL	50×
Washing Buffer	100 mL ×2	20×
Blocking Buffer	5 mL	RTU
Primary Antibody	5 mL	RTU
Secondary Antibody	5 mL	RTU
Chromogen Component A	0.2 mL	RTU
Chromogen Component B	4 mL	RTU
Signal Enhancer	5 mL	RTU
Counter Staining Reagent	5 mL	RTU
Mounting Media	5 mL	RTU
Control Slide	1 slide (Optional)	FFPE
Datasheet	1 Copy	
Manual	1 Copy	

Storage Instructions

All the reagents are stored at 2-8°C. The kit is stable for 6 months from the date of receipt.

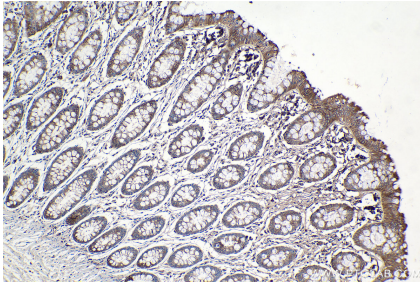
Background

GGH (Gamma glutamyl hydrolase), also named as GH or Conjugase, is a key lysosomal enzyme involved in the metabolism of folic acid and in the action of antifolate drugs. GGH catalyzes the removal of γ -linked polyglutamates from the intracellular folylpolyglutamates to yield folylmonoglutamate coenzymes. GGH can form homodimer which contains two potential active sites.

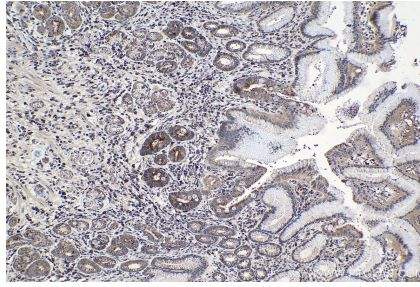
Synonyms

Conjugase, Gamma Glu X carboxypeptidase, Gamma glutamyl hydrolase, GGH, GH

Selected Validation Data



Immunohistochemical analysis of paraffin-embedded human colon tissue slide using KHC0998 (GGH IHC Kit).



Immunohistochemical analysis of paraffin-embedded human stomach cancer tissue slide using KHC0998 (GGH IHC Kit).