

# IHC*easy* SEPT7 Ready-To-Use IHC Kit

Catalog Number: **KHC0995**

## General Information

Sample type:  
FFPE tissue  
Cited sample type:  
Reactivity:  
Human, Mouse  
Cited Reactivity:

Assay type:  
Immunohistochemistry  
Primary antibody type:  
Rabbit Polyclonal  
Secondary antibody type:  
Polymer-HRP-Goat anti-Rabbit

## Kit Component

Component	Size	Concentration
Antigen Retrieval Buffer	100 mL	50×
Washing Buffer	100 mL ×2	20×
Blocking Buffer	5 mL	RTU
Primary Antibody	5 mL	RTU
Secondary Antibody	5 mL	RTU
Chromogen Component A	0.2 mL	RTU
Chromogen Component B	4 mL	RTU
Signal Enhancer	5 mL	RTU
Counter Staining Reagent	5 mL	RTU
Mounting Media	5 mL	RTU
Control Slide	1 slide (Optional)	FFPE
Datasheet	1 Copy	
Manual	1 Copy	

## Storage Instructions

All the reagents are stored at 2-8°C. The kit is stable for 6 months from the date of receipt.

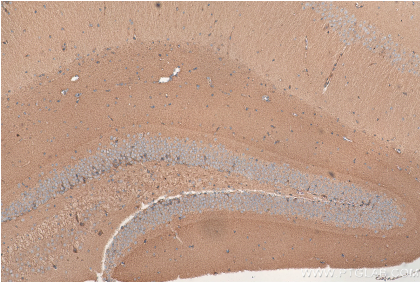
## Background

Septins (SEPTs) are members of a conserved family of cytoskeletal GTPases involved in various cellular processes, including cytoskeleton organization, cytokinesis, and membrane dynamics. SEPT7 is a unique septin required for filament formation. It has also been reported to be involved in migration and invasion in various cancer cells, including breast cancer and glioma.

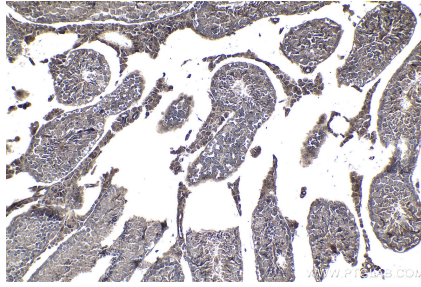
## Synonyms

CDC10, CDC10 protein homolog, CDC3, Nbla02942, SEPT7, SEPT7A, septin 7, septin7

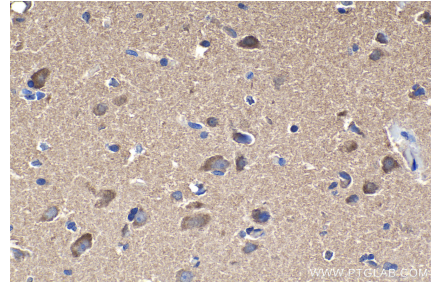
## Selected Validation Data



Immunohistochemical analysis of paraffin-embedded mouse brain tissue slide using KHC0995 (SEPT7 IHC Kit).



Immunohistochemical analysis of paraffin-embedded mouse testis tissue slide using KHC0995 (SEPT7 IHC Kit).



Immunohistochemical analysis of paraffin-embedded human gliomas tissue slide using KHC0995 (SEPT7 IHC Kit).