

# IHC*easy* MAP2K2 Ready-To-Use IHC Kit

Catalog Number: **KHC0986**

## General Information

Sample type:  
FFPE tissue  
Cited sample type:  
Reactivity:  
Human, Mouse, Rat  
Cited Reactivity:

Assay type:  
Immunohistochemistry  
Primary antibody type:  
Mouse Monoclonal  
Secondary antibody type:  
Polymer-HRP-Goat anti-Mouse

## Kit Component

Component	Size	Concentration
Antigen Retrieval Buffer	100 mL	50×
Washing Buffer	100 mL ×2	20×
Blocking Buffer	5 mL	RTU
Primary Antibody	5 mL	RTU
Secondary Antibody	5 mL	RTU
Chromogen Component A	0.2 mL	RTU
Chromogen Component B	4 mL	RTU
Signal Enhancer	5 mL	RTU
Counter Staining Reagent	5 mL	RTU
Mounting Media	5 mL	RTU
Control Slide	1 slide (Optional)	FFPE
Datasheet	1 Copy	
Manual	1 Copy	

## Storage Instructions

All the reagents are stored at 2-8°C. The kit is stable for 6 months from the date of receipt.

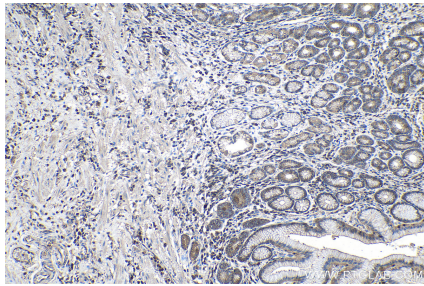
## Background

MEK2(MAPK/ERK kinase 2) is also named as MAP2K2, MKK2, PRKMK2 and belongs to the MAP kinase kinase subfamily. MAPKK is itself dependent on Ser/Thr phosphorylation for activity catalyzed by MAP kinase kinase kinases (RAF or MEKK1). MEK1 and MEK2 are closely related, dual-specificity tyrosine/threonine protein kinases found in the Ras/Raf/MEK/ERK mitogen-activated protein kinase (MAPK) signaling pathway.

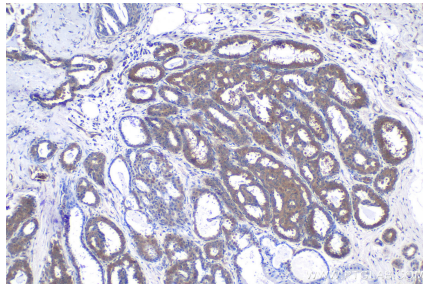
## Synonyms

ERK activator kinase 2, FLJ26075, MAP kinase kinase 2, MAP2K2, MAPK/ERK kinase 2, MAPKK 2, MAPKK2, MEK 2, MEK2, MKK2, PRKMK2

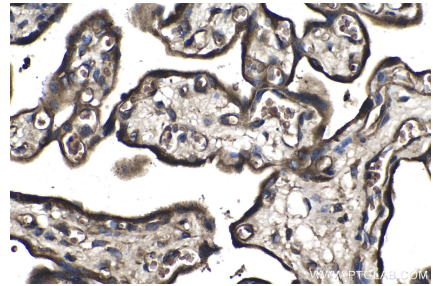
## Selected Validation Data



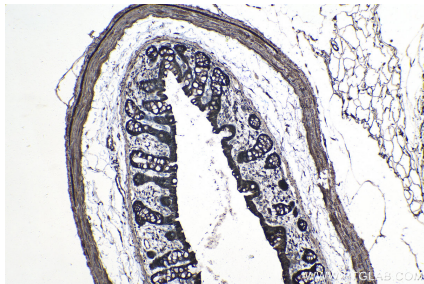
Immunohistochemical analysis of paraffin-embedded human stomach cancer tissue slide using KHC0986 (MAP2K2 IHC Kit).



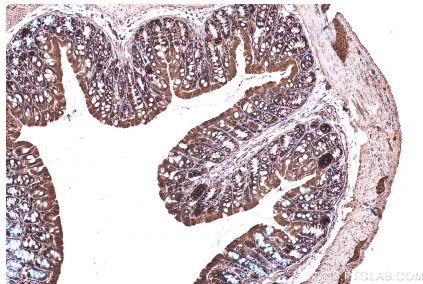
Immunohistochemical analysis of paraffin-embedded human breast cancer tissue slide using KHC0986 (MAP2K2 IHC Kit).



Immunohistochemical analysis of paraffin-embedded human placenta tissue slide using KHC0986 (MAP2K2 IHC Kit).



Immunohistochemical analysis of paraffin-embedded rat colon tissue slide using KHC0986 (MAP2K2 IHC Kit).



Immunohistochemical analysis of paraffin-embedded mouse colon tissue slide using KHC0986 (MAP2K2 IHC Kit).