

IHC*easy* ACTL6A Ready-To-Use IHC Kit

Catalog Number: **KHC0982**

General Information

Sample type:
FFPE tissue
Cited sample type:
Reactivity:
Human, Mouse, Rat
Cited Reactivity:

Assay type:
Immunohistochemistry
Primary antibody type:
Rabbit Polyclonal
Secondary antibody type:
Polymer-HRP-Goat anti-Rabbit

Kit Component

Component	Size	Concentration
Antigen Retrieval Buffer	100 mL	50×
Washing Buffer	100 mL ×2	20×
Blocking Buffer	5 mL	RTU
Primary Antibody	5 mL	RTU
Secondary Antibody	5 mL	RTU
Chromogen Component A	0.2 mL	RTU
Chromogen Component B	4 mL	RTU
Signal Enhancer	5 mL	RTU
Counter Staining Reagent	5 mL	RTU
Mounting Media	5 mL	RTU
Control Slide	1 slide (Optional)	FFPE
Datasheet	1 Copy	
Manual	1 Copy	

Storage Instructions

All the reagents are stored at 2-8°C. The kit is stable for 6 months from the date of receipt.

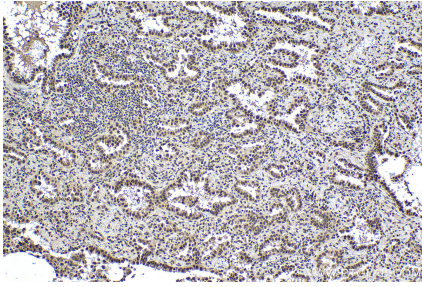
Background

Actin-like 6A (ACTL6A, synonyms: ACTL6, BAF53A, MGC5382) is a family member of actin-related proteins (ARPs), which share significant amino acid sequence identity to conventional actins. Both actins and ARPs have an actin fold, which is an ATP-binding cleft, as a common feature. The ARPs are involved in diverse cellular processes, including vesicular transport, spindle orientation, nuclear migration and chromatin remodeling. ACTL6A is a subunit protein of the BAF (BRG1/brm-associated factor) complex in mammals, which is functionally related to SWI/SNF complex in *S. cerevisiae* and *Drosophila*; the latter is thought to facilitate transcriptional activation of specific genes by antagonizing chromatin-mediated transcriptional repression. Together with beta-actin, it is required for maximal ATPase activity of BRG1, and for the association of the BAF complex with chromatin/matrix.

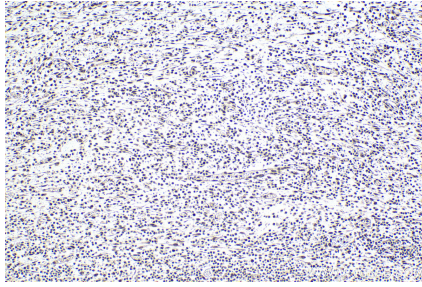
Synonyms

actin like 6A, Actin like protein 6A, Actin related protein Baf53a, ACTL6, ACTL6A, Arp4, ARPN BETA, ArpNbata, BAF53, BAF53A, BRG1 associated factor 53A, INO80 complex subunit K, INO80K

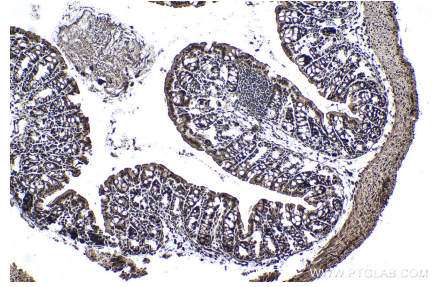
Selected Validation Data



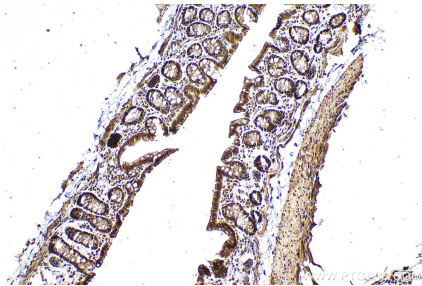
Immunohistochemical analysis of paraffin-embedded human lung cancer tissue slide using KHC0982 (ACTL6A IHC Kit).



Immunohistochemical analysis of paraffin-embedded human colon cancer tissue slide using KHC0982 (ACTL6A IHC Kit).



Immunohistochemical analysis of paraffin-embedded mouse colon tissue slide using KHC0982 (ACTL6A IHC Kit).



Immunohistochemical analysis of paraffin-embedded rat colon tissue slide using KHC0982 (ACTL6A IHC Kit).