

IHC*easy* DYNLL1 Ready-To-Use IHC Kit

Catalog Number: **KHC0975**

General Information

Sample type:
FFPE tissue
Cited sample type:
Reactivity:
Human, Mouse
Cited Reactivity:

Assay type:
Immunohistochemistry
Primary antibody type:
Rabbit Polyclonal
Secondary antibody type:
Polymer-HRP-Goat anti-Rabbit

Kit Component

Component	Size	Concentration
Antigen Retrieval Buffer	100 mL	50×
Washing Buffer	100 mL ×2	20×
Blocking Buffer	5 mL	RTU
Primary Antibody	5 mL	RTU
Secondary Antibody	5 mL	RTU
Chromogen Component A	0.2 mL	RTU
Chromogen Component B	4 mL	RTU
Signal Enhancer	5 mL	RTU
Counter Staining Reagent	5 mL	RTU
Mounting Media	5 mL	RTU
Control Slide	1 slide (Optional)	FFPE
Datasheet	1 Copy	
Manual	1 Copy	

Storage Instructions

All the reagents are stored at 2-8°C. The kit is stable for 6 months from the date of receipt.

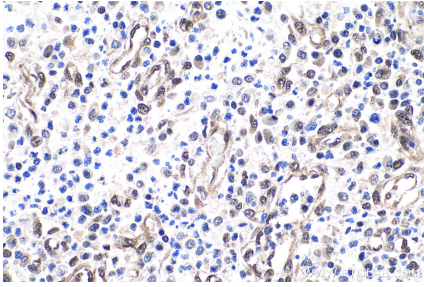
Background

DYNLL1 (also known as LC8) is a homodimeric sequence-specific chaperone that promotes the ordered (typically homo-) oligomerization of more than a hundred protein targets. LC8/DYNLL1 has previously been proposed to function as an inhibitor of the NF- κ B pathway, based on findings that it can bind directly to the I κ B α regulatory region. LC8/DYNLL1 regulates apoptotic activities of BCL2L11 by sequestering it to microtubules.

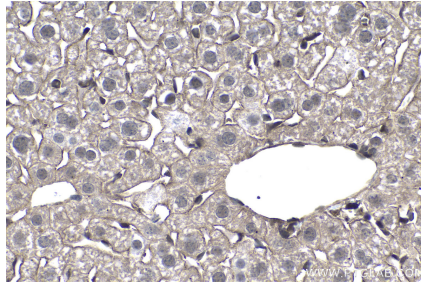
Synonyms

8 kDa dynein light chain, DLC1, DLC8, DNCL1, DNCLC1, Dynein light chain LC8 type 1, DYNLL1, hdlc1, LC8, LC8a, PIN

Selected Validation Data



Immunohistochemical analysis of paraffin-embedded human colon cancer tissue slide using KHC0975 (DYNLL1 IHC Kit).



Immunohistochemical analysis of paraffin-embedded mouse liver tissue slide using KHC0975 (DYNLL1 IHC Kit).