

IHC*easy* GAA Ready-To-Use IHC Kit

Catalog Number: **KHC0971**

General Information

Sample type:
FFPE tissue
Cited sample type:
Reactivity:
Human, Mouse
Cited Reactivity:

Assay type:
Immunohistochemistry
Primary antibody type:
Rabbit Polyclonal
Secondary antibody type:
Polymer-HRP-Goat anti-Rabbit

Kit Component

Component	Size	Concentration
Antigen Retrieval Buffer	100 mL	50×
Washing Buffer	100 mL ×2	20×
Blocking Buffer	5 mL	RTU
Primary Antibody	5 mL	RTU
Secondary Antibody	5 mL	RTU
Chromogen Component A	0.2 mL	RTU
Chromogen Component B	4 mL	RTU
Signal Enhancer	5 mL	RTU
Counter Staining Reagent	5 mL	RTU
Mounting Media	5 mL	RTU
Control Slide	1 slide (Optional)	FFPE
Datasheet	1 Copy	
Manual	1 Copy	

Storage Instructions

All the reagents are stored at 2-8°C. The kit is stable for 6 months from the date of receipt.

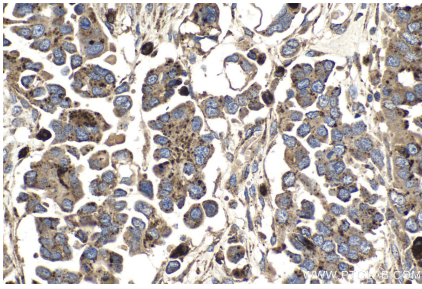
Background

GAA(Alpha-1,4-glucosidase) is a lysosomal enzyme involved in the degradation of glycogen within cellular vacuoles. After translation, GAA undergoes proteolytic processing to form two lengths of lysosomal α -glucosidase, and both N-terminal and C-terminal processing occur. The full sequence can be further processed into a mature form.

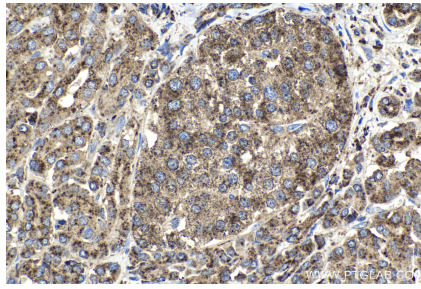
Synonyms

Acid maltase, Aglucosidase alfa, GAA, glucosidase, alpha; acid, LYAG, Lysosomal alpha glucosidase

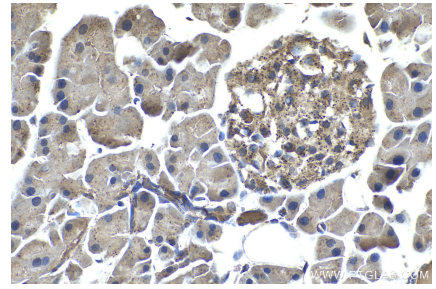
Selected Validation Data



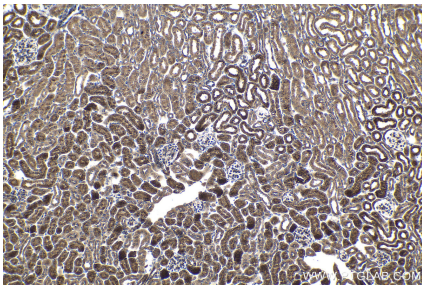
Immunohistochemical analysis of paraffin-embedded human colon cancer tissue slide using KHC0971 (GAA IHC Kit).



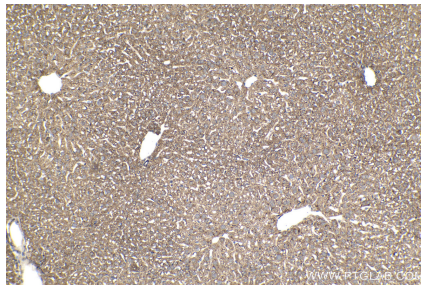
Immunohistochemical analysis of paraffin-embedded human pancreas cancer tissue slide using KHC0971 (GAA IHC Kit).



Immunohistochemical analysis of paraffin-embedded mouse pancreas tissue slide using KHC0971 (GAA IHC Kit).



Immunohistochemical analysis of paraffin-embedded mouse kidney tissue slide using KHC0971 (GAA IHC Kit).



Immunohistochemical analysis of paraffin-embedded mouse liver tissue slide using KHC0971 (GAA IHC Kit).