

# IHC*easy* EXOSC7 Ready-To-Use IHC Kit

Catalog Number: **KHC0955**

## General Information

Sample type:  
FFPE tissue  
Cited sample type:  
Reactivity:  
Human, Mouse, Rat  
Cited Reactivity:

Assay type:  
Immunohistochemistry  
Primary antibody type:  
Rabbit Polyclonal  
Secondary antibody type:  
Polymer-HRP-Goat anti-Rabbit

## Kit Component

Component	Size	Concentration
Antigen Retrieval Buffer	100 mL	50×
Washing Buffer	100 mL ×2	20×
Blocking Buffer	5 mL	RTU
Primary Antibody	5 mL	RTU
Secondary Antibody	5 mL	RTU
Chromogen Component A	0.2 mL	RTU
Chromogen Component B	4 mL	RTU
Signal Enhancer	5 mL	RTU
Counter Staining Reagent	5 mL	RTU
Mounting Media	5 mL	RTU
Control Slide	1 slide (Optional)	FFPE
Datasheet	1 Copy	
Manual	1 Copy	

## Storage Instructions

All the reagents are stored at 2-8°C. The kit is stable for 6 months from the date of receipt.

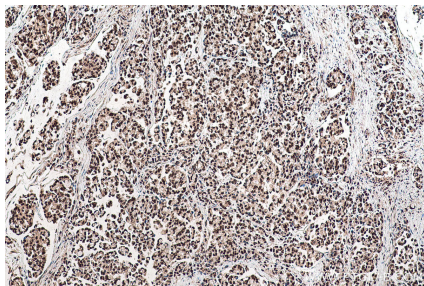
## Background

In the nucleus, the RNA exosome complex is involved in proper maturation of stable RNA species such as rRNA, snRNA and snoRNA, in the elimination of RNA processing by-products and non-coding 'pervasive' transcripts, such as antisense RNA species and promoter-upstream transcripts and of mRNAs with processing defects, thereby limiting or excluding their export to the cytoplasm. EXOSC7 also named as RRP42 or EAP1 is a 291 amino acid protein, which belongs to the RNase PH family. EXOSC7 is one of the six RNase-PH domain subunits of the exosome and required for the processing of the 7S pre-RNA.

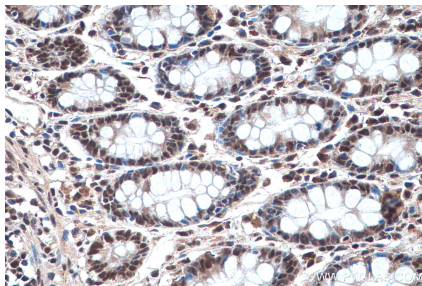
## Synonyms

EAP1, EXOSC7, exosome component 7, hRrp42p, KIAA0116, p8, RRP42, Rrp42p

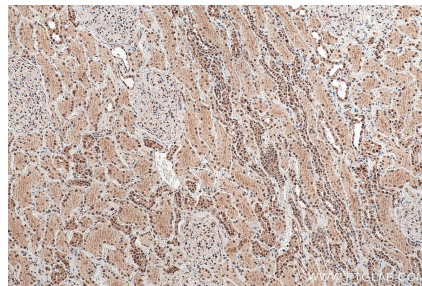
## Selected Validation Data



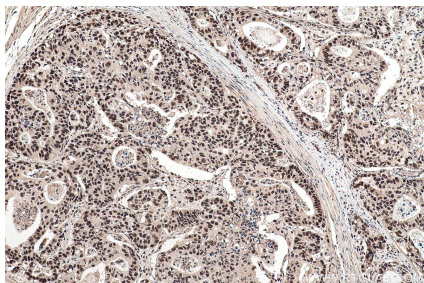
Immunohistochemical analysis of paraffin-embedded human colon cancer tissue slide using KHC0955 (EXOSC7 IHC Kit).



Immunohistochemical analysis of paraffin-embedded human colon tissue slide using KHC0955 (EXOSC7 IHC Kit).



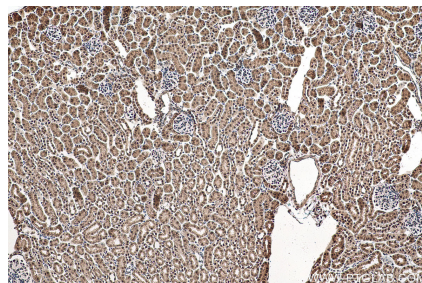
Immunohistochemical analysis of paraffin-embedded human kidney tissue slide using KHC0955 (EXOSC7 IHC Kit).



Immunohistochemical analysis of paraffin-embedded human stomach cancer tissue slide using KHC0955 (EXOSC7 IHC Kit).



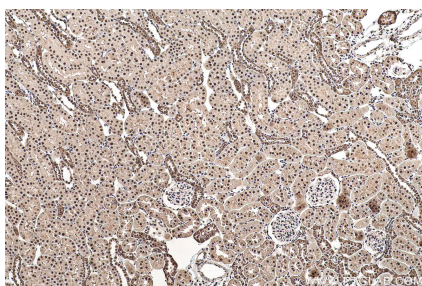
Immunohistochemical analysis of paraffin-embedded mouse colon tissue slide using KHC0955 (EXOSC7 IHC Kit).



Immunohistochemical analysis of paraffin-embedded mouse kidney tissue slide using KHC0955 (EXOSC7 IHC Kit).



Immunohistochemical analysis of paraffin-embedded rat colon tissue slide using KHC0955 (EXOSC7 IHC Kit).



Immunohistochemical analysis of paraffin-embedded rat kidney tissue slide using KHC0955 (EXOSC7 IHC Kit).