

IHC*easy* FCGR2A/CD32A Ready-To-Use IHC Kit

Catalog Number: **KHC0941**

General Information

Sample type:
FFPE tissue
Cited sample type:
Reactivity:
Human
Cited Reactivity:

Assay type:
Immunohistochemistry
Primary antibody type:
Mouse Monoclonal
Secondary antibody type:
Polymer-HRP-Goat anti-Mouse

Kit Component

Component	Size	Concentration
Antigen Retrieval Buffer	100 mL	50×
Washing Buffer	100 mL ×2	20×
Blocking Buffer	5 mL	RTU
Primary Antibody	5 mL	RTU
Secondary Antibody	5 mL	RTU
Chromogen Component A	0.2 mL	RTU
Chromogen Component B	4 mL	RTU
Signal Enhancer	5 mL	RTU
Counter Staining Reagent	5 mL	RTU
Mounting Media	5 mL	RTU
Control Slide	1 slide (Optional)	FFPE
Datasheet	1 Copy	
Manual	1 Copy	

Storage Instructions

All the reagents are stored at 2-8°C. The kit is stable for 6 months from the date of receipt.

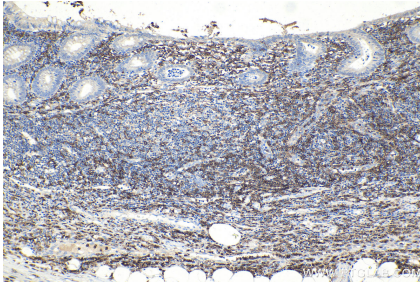
Background

IgG Fc receptors (Fc γ Rs) play important roles in immune responses. Low affinity IgG Fc receptor Fc gamma RIIa (FCGR2A, CD32a) is a cell surface receptor found on phagocytic cells such as macrophages and neutrophils, and is involved in the process of phagocytosis and clearing of immune complexes.

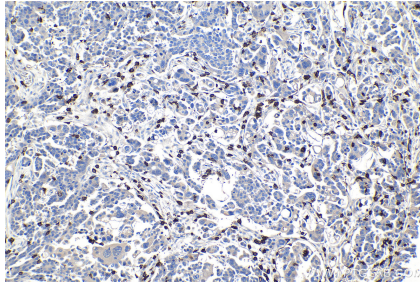
Synonyms

CD32, CD32A, CDw32, Fc gamma RII a, Fc gamma RIIa, FCG2, FcGR, FCGR2, FCGR2A, FCGR2A1, FcRII a, IGFR2, IgG Fc receptor II a

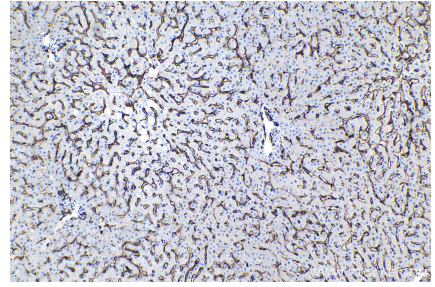
Selected Validation Data



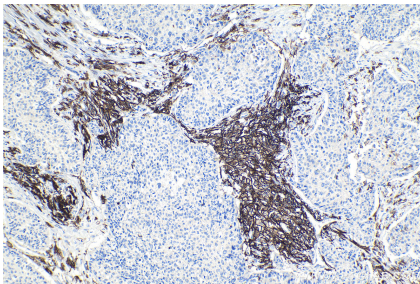
Immunohistochemical analysis of paraffin-embedded human appendicitis tissue slide using KHC0941 (FCGR2A/CD32A IHC Kit).



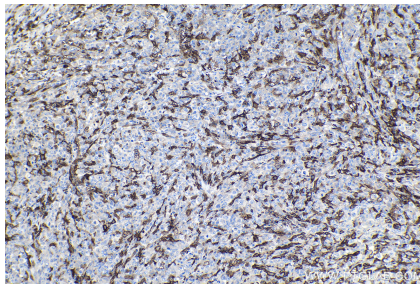
Immunohistochemical analysis of paraffin-embedded human colon cancer tissue slide using KHC0941 (FCGR2A/CD32A IHC Kit).



Immunohistochemical analysis of paraffin-embedded human liver tissue slide using KHC0941 (FCGR2A/CD32A IHC Kit).



Immunohistochemical analysis of paraffin-embedded human lung cancer tissue slide using KHC0941 (FCGR2A/CD32A IHC Kit).



Immunohistochemical analysis of paraffin-embedded human lymphoma tissue slide using KHC0941 (FCGR2A/CD32A IHC Kit).