

IHCeasy[®] IMPDH1 Ready-To-Use IHC Kit

Catalog Number: **KHC0911**

General Information

Sample type:
FFPE tissue
Cited sample type:
Reactivity:
Human, Mouse, Rat
Cited Reactivity:

Assay type:
Immunohistochemistry
Primary antibody type:
Rabbit Polyclonal
Secondary antibody type:
Polymer-HRP-Goat anti-Rabbit

Kit Component

Component	Size	Concentration
Antigen Retrieval Buffer	100 mL	50×
Washing Buffer	100 mL ×2	20×
Blocking Buffer	5 mL	RTU
Primary Antibody	5 mL	RTU
Secondary Antibody	5 mL	RTU
Chromogen Component A	0.2 mL	RTU
Chromogen Component B	4 mL	RTU
Signal Enhancer	5 mL	RTU
Counter Staining Reagent	5 mL	RTU
Mounting Media	5 mL	RTU
Control Slide	1 slide (Optional)	FFPE
Datasheet	1 Copy	
Manual	1 Copy	

Storage Instructions

All the reagents are stored at 2-8°C. The kit is stable for 6 months from the date of receipt.

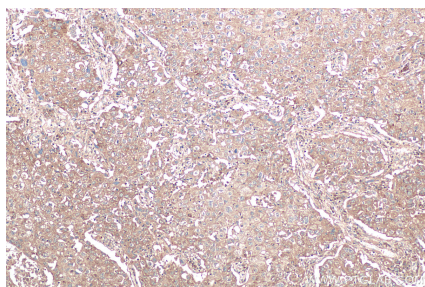
Background

IMPDH1(Inosine-5'-monophosphate dehydrogenase 1) is also named as IMPD1, IMP dehydrogenase 1 and belongs to the IMPDH/GMPR family. It catalyzes the rate limiting step of de novo guanine synthesis and an important target for the development of drugs with both chemotherapeutic and immunosuppressive activity. It may also have a role in the development of malignancy and the growth progression of some tumors. Primary antibody in this kit may has cross reaction with IMPDH2 due to their high homology.

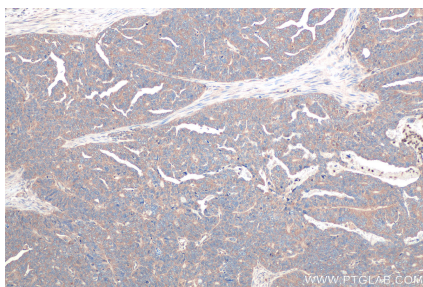
Synonyms

IMP dehydrogenase 1, IMPD, IMPD 1, IMPD1, IMPDH 1, IMPDH I, IMPDH1, LCA11, RP10, sWSS2608

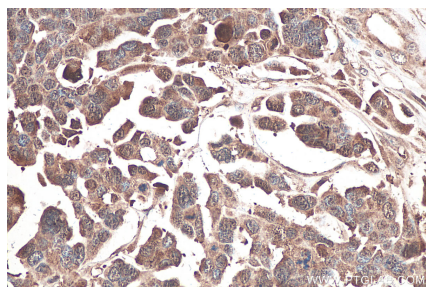
Selected Validation Data



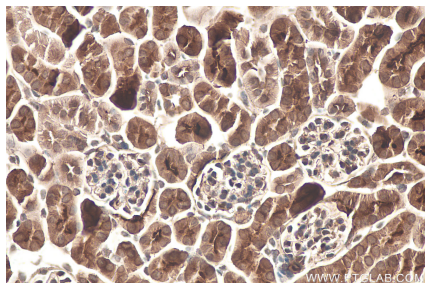
Immunohistochemical analysis of paraffin-embedded human lung cancer tissue slide using KHC0911 (IMPDH1 IHC Kit).



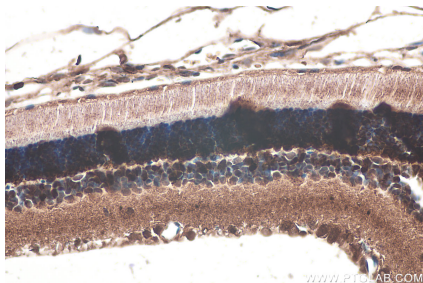
Immunohistochemical analysis of paraffin-embedded human ovary tumor tissue slide using KHC0911 (IMPDH1 IHC Kit).



Immunohistochemical analysis of paraffin-embedded human colon cancer tissue slide using KHC0911 (IMPDH1 IHC Kit).



Immunohistochemical analysis of paraffin-embedded mouse kidney tissue slide using KHC0911 (IMPDH1 IHC Kit).



Immunohistochemical analysis of paraffin-embedded rat eye tissue slide using KHC0911 (IMPDH1 IHC Kit).