

IHC*easy* NUDT21 Ready-To-Use IHC Kit

Catalog Number: **KHC0870**

General Information

Sample type:
FFPE tissue

Cited sample type:

Reactivity:
Human, Mouse, Rat

Cited Reactivity:

Assay type:
Immunohistochemistry

Primary antibody type:
Mouse Monoclonal

Secondary antibody type:
Polymer-HRP-Goat anti-Mouse

Kit Component

Component	Size	Concentration
Antigen Retrieval Buffer	100 mL	50×
Washing Buffer	100 mL ×2	20×
Blocking Buffer	5 mL	RTU
Primary Antibody	5 mL	RTU
Secondary Antibody	5 mL	RTU
Chromogen Component A	0.2 mL	RTU
Chromogen Component B	4 mL	RTU
Signal Enhancer	5 mL	RTU
Counter Staining Reagent	5 mL	RTU
Mounting Media	5 mL	RTU
Control Slide	1 slide (Optional)	FFPE
Datasheet	1 Copy	
Manual	1 Copy	

Storage Instructions

All the reagents are stored at 2-8°C. The kit is stable for 6 months from the date of receipt.

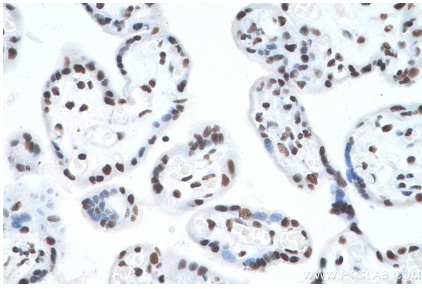
Background

Cleavage and polyadenylation specific factor 5 (CPSF5), also named NUDT21, is one subunit of a cleavage factor required for 3' RNA cleavage and polyadenylation processing. The interaction of CPSF5 with the RNA is one of the earliest steps in the assembly of the 3' end processing complex and facilitates the recruitment of other processing factors.

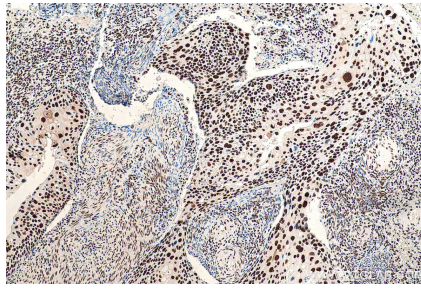
Synonyms

CFIM25, CPSF 25 kDa subunit, CPSF25, CPSF5, Nudix motif 21, NUDT21

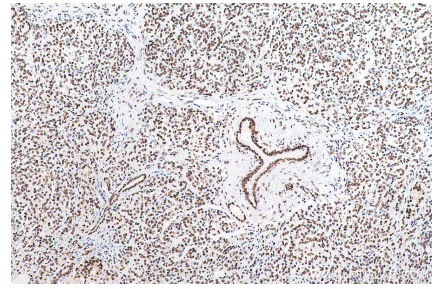
Selected Validation Data



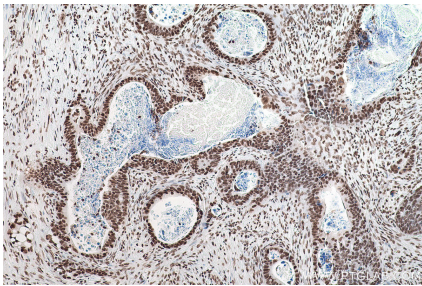
Immunohistochemical analysis of paraffin-embedded human placenta tissue slide using KHC0870 (NUDT21 IHC Kit).



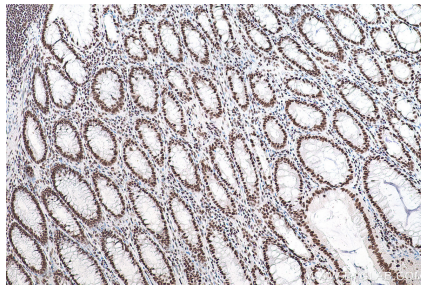
Immunohistochemical analysis of paraffin-embedded human cervical cancer tissue slide using KHC0870 (NUDT21 IHC Kit).



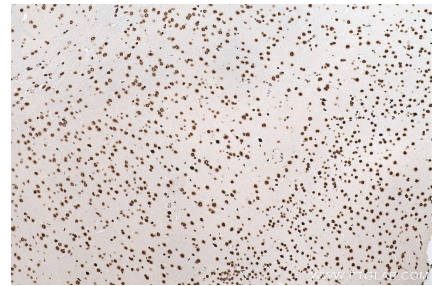
Immunohistochemical analysis of paraffin-embedded human pancreas cancer tissue slide using KHC0870 (NUDT21 IHC Kit).



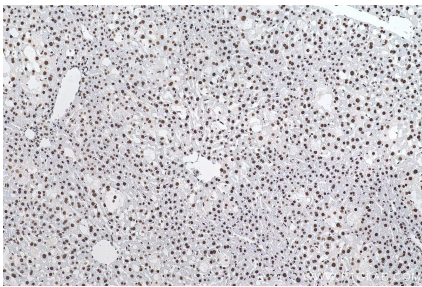
Immunohistochemical analysis of paraffin-embedded human colon cancer tissue slide using KHC0870 (NUDT21 IHC Kit).



Immunohistochemical analysis of paraffin-embedded human colon cancer tissue (ANCT) slide using KHC0870 (NUDT21 IHC Kit).



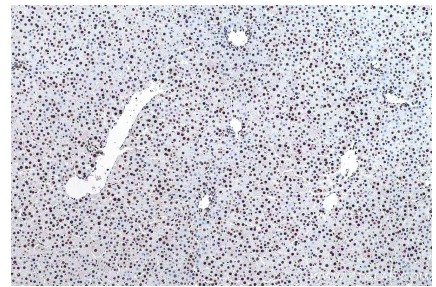
Immunohistochemical analysis of paraffin-embedded mouse brain tissue slide using KHC0870 (NUDT21 IHC Kit).



Immunohistochemical analysis of paraffin-embedded mouse liver tissue slide using KHC0870 (NUDT21 IHC Kit).



Immunohistochemical analysis of paraffin-embedded rat brain tissue slide using KHC0870 (NUDT21 IHC Kit).



Immunohistochemical analysis of paraffin-embedded rat liver tissue slide using KHC0870 (NUDT21 IHC Kit).