

# IHCeasy<sup>®</sup> PSMD5 Ready-To-Use IHC Kit

Catalog Number: **KHC0858**

## General Information

Sample type:  
FFPE tissue  
Cited sample type:  
Reactivity:  
Human, Mouse, Rat  
Cited Reactivity:

Assay type:  
Immunohistochemistry  
Primary antibody type:  
Rabbit Polyclonal  
Secondary antibody type:  
Polymer-HRP-Goat anti-Rabbit

## Kit Component

Component	Size	Concentration
Antigen Retrieval Buffer	100 mL	50×
Washing Buffer	100 mL ×2	20×
Blocking Buffer	5 mL	RTU
Primary Antibody	5 mL	RTU
Secondary Antibody	5 mL	RTU
Chromogen Component A	0.2 mL	RTU
Chromogen Component B	4 mL	RTU
Signal Enhancer	5 mL	RTU
Counter Staining Reagent	5 mL	RTU
Mounting Media	5 mL	RTU
Control Slide	1 slide (Optional)	FFPE
Datasheet	1 Copy	
Manual	1 Copy	

## Storage Instructions

All the reagents are stored at 2-8°C. The kit is stable for 6 months from the date of receipt.

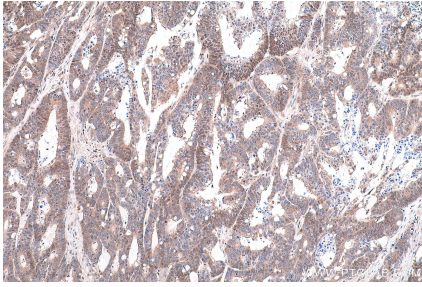
## Background

PSMD5, also named as KIAA0072, belongs to the proteasome subunit S5B/HSM3 family. It acts as a chaperone during the assembly of the 26S proteasome, specifically of the base subcomplex of the PA700/19S regulatory complex (RC). In the initial step of the base subcomplex assembly, it is part of an intermediate PSMD5:PSMC2:PSMC1:PSMD2 module which probably assembles with a SMD10:PSMC4:PSMC5:PAAF1 module followed by dissociation of PSMD5.

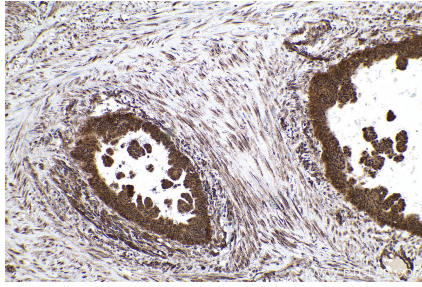
## Synonyms

26S protease subunit S5 basic, 26S proteasome subunit S5B, KIAA0072, PSMD5, S5B

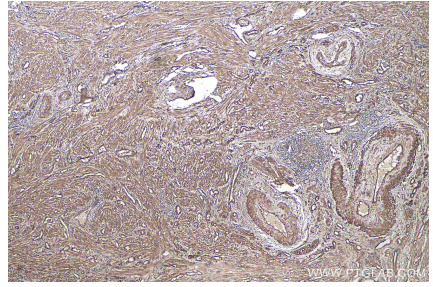
## Selected Validation Data



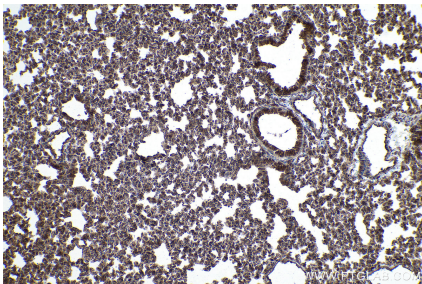
Immunohistochemical analysis of paraffin-embedded human colon cancer tissue slide using KHC0858 (PSMD5 IHC Kit).



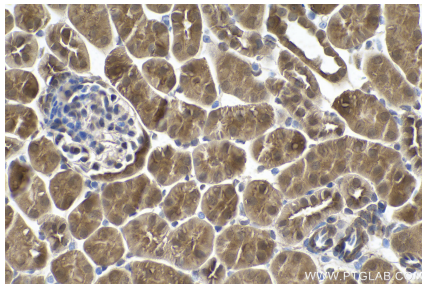
Immunohistochemical analysis of paraffin-embedded human urothelial carcinoma tissue slide using KHC0858 (PSMD5 IHC Kit).



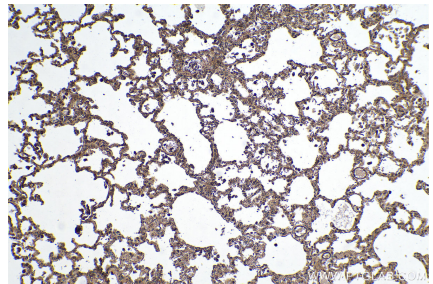
Immunohistochemical analysis of paraffin-embedded human endometrial cancer tissue slide using KHC0858 (PSMD5 IHC Kit).



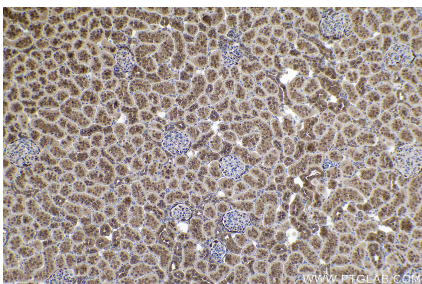
Immunohistochemical analysis of paraffin-embedded mouse lung tissue slide using KHC0858 (PSMD5 IHC Kit).



Immunohistochemical analysis of paraffin-embedded mouse kidney tissue slide using KHC0858 (PSMD5 IHC Kit).



Immunohistochemical analysis of paraffin-embedded rat lung tissue slide using KHC0858 (PSMD5 IHC Kit).



Immunohistochemical analysis of paraffin-embedded rat kidney tissue slide using KHC0858 (PSMD5 IHC Kit).