

# IHC*easy* ABCB1 Ready-To-Use IHC Kit

Catalog Number: **KHC0820**

## General Information

Sample type:  
FFPE tissue  
Cited sample type:  
Reactivity:  
Human, Mouse, Rat  
Cited Reactivity:

Assay type:  
Immunohistochemistry  
Primary antibody type:  
Rabbit Polyclonal  
Secondary antibody type:  
Polymer-HRP-Goat anti-Rabbit

## Kit Component

Component	Size	Concentration
Antigen Retrieval Buffer	100 mL	50×
Washing Buffer	100 mL ×2	20×
Blocking Buffer	5 mL	RTU
Primary Antibody	5 mL	RTU
Secondary Antibody	5 mL	RTU
Chromogen Component A	0.2 mL	RTU
Chromogen Component B	4 mL	RTU
Signal Enhancer	5 mL	RTU
Counter Staining Reagent	5 mL	RTU
Mounting Media	5 mL	RTU
Control Slide	1 slide (Optional)	FFPE
Datasheet	1 Copy	
Manual	1 Copy	

## Storage Instructions

All the reagents are stored at 2-8°C. The kit is stable for 6 months from the date of receipt.

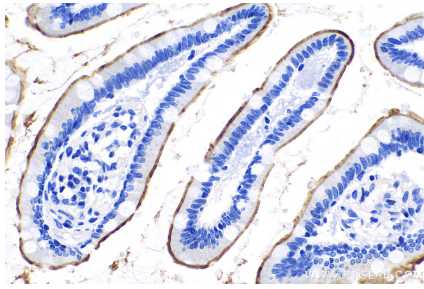
## Background

ABCB1 (also known as P-gp/ P-glycoprotein, MDR1/multidrug-resistance 1) is a plasma membrane protein first discovered in multidrug resistant tumor cells. ABCB1 can extrude a large number of medically relevant compounds from cells and causes drug resistance. ABCB1 is expressed in a variety of human cancers as well as normal tissues including brain, and placenta. Overexpression of ABCB1 correlates with a negative prognosis in several types of cancer.

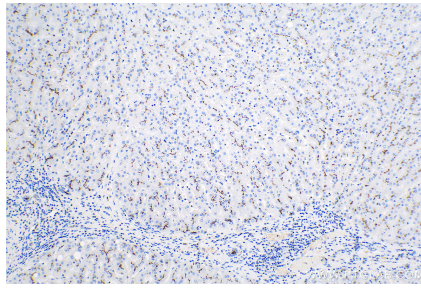
## Synonyms

ABC20, ABCB1, CD243, CLCS, GP170, MDR1, Multidrug resistance protein 1, P glycoprotein, P glycoprotein 1, P GP, P-gp, PGY1

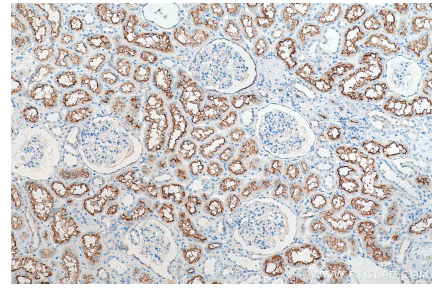
## Selected Validation Data



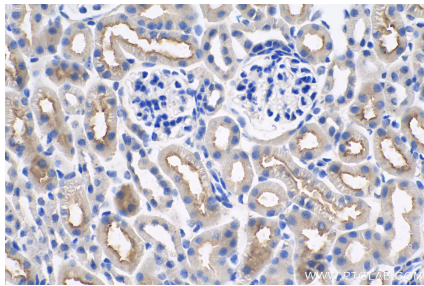
Immunohistochemical analysis of paraffin-embedded human small intestine tissue slide using KHC0820 (P glycoprotein IHC Kit).



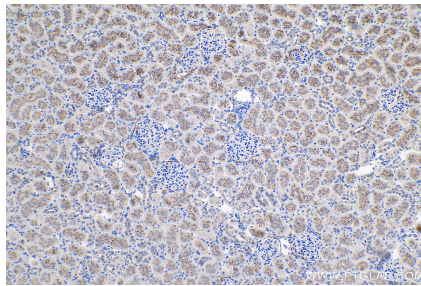
Immunohistochemical analysis of paraffin-embedded human liver tissue slide using KHC0820 (P glycoprotein IHC Kit).



Immunohistochemical analysis of paraffin-embedded human kidney tissue slide using KHC0820 (P glycoprotein IHC Kit).



Immunohistochemical analysis of paraffin-embedded mouse kidney tissue slide using KHC0820 (P glycoprotein IHC Kit).



Immunohistochemical analysis of paraffin-embedded rat kidney tissue slide using KHC0820 (P glycoprotein IHC Kit).