

IHC*easy* MMP12 Ready-To-Use IHC Kit

Catalog Number: **KHC0785**

General Information

Sample type:
FFPE tissue
Cited sample type:
Reactivity:
Human
Cited Reactivity:

Assay type:
Immunohistochemistry
Primary antibody type:
Rabbit Polyclonal
Secondary antibody type:
Polymer-HRP-Goat anti-Rabbit

Kit Component

Component	Size	Concentration
Antigen Retrieval Buffer	100 mL	50×
Washing Buffer	100 mL ×2	20×
Blocking Buffer	5 mL	RTU
Primary Antibody	5 mL	RTU
Secondary Antibody	5 mL	RTU
Chromogen Component A	0.2 mL	RTU
Chromogen Component B	4 mL	RTU
Signal Enhancer	5 mL	RTU
Counter Staining Reagent	5 mL	RTU
Mounting Media	5 mL	RTU
Control Slide	1 slide (Optional)	FFPE
Datasheet	1 Copy	
Manual	1 Copy	

Storage Instructions

All the reagents are stored at 2-8°C. The kit is stable for 6 months from the date of receipt.

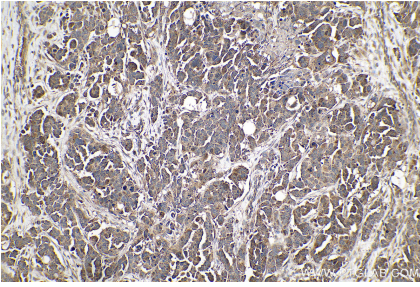
Background

MMP12(Matrix metalloproteinase-12) is a proenzyme. MMP9 and MMP12 promote intimal thickening by independent cleavage of N-cadherin, which elevates vascular smooth muscle cell proliferation via beta-catenin signalling. Its overexpression in myeloid lineage cells plays a key role in modulating myelopoiesis, immune suppression, and lung tumorigenesis.

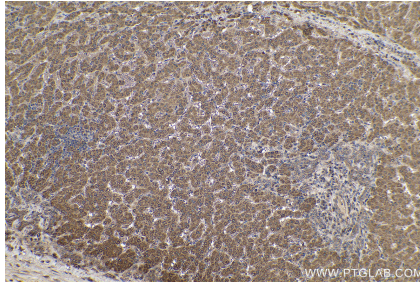
Synonyms

HME, Macrophage elastase, Macrophage metalloelastase, Matrix metalloproteinase 12, ME, MME, MMP 12, MMP12

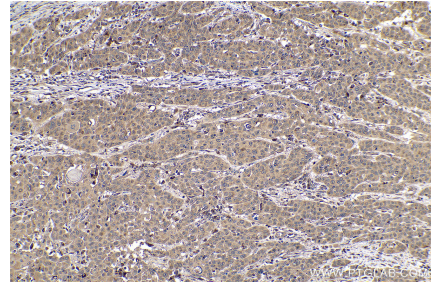
Selected Validation Data



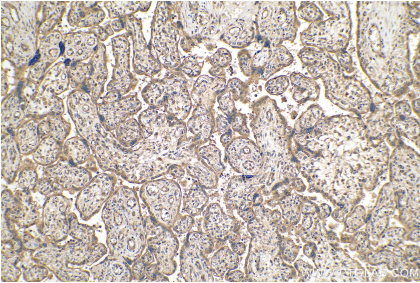
Immunohistochemical analysis of paraffin-embedded human colon cancer tissue slide using KHC0785 (MMP12 IHC Kit).



Immunohistochemical analysis of paraffin-embedded human liver cancer tissue slide using KHC0785 (MMP12 IHC Kit).



Immunohistochemical analysis of paraffin-embedded human oesophagus cancer tissue slide using KHC0785 (MMP12 IHC Kit).



Immunohistochemical analysis of paraffin-embedded human placenta tissue slide using KHC0785 (MMP12 IHC Kit).