

# IHC*easy* MCC Ready-To-Use IHC Kit

Catalog Number: **KHC0759**

## General Information

Sample type:  
FFPE tissue  
Cited sample type:  
Reactivity:  
Human  
Cited Reactivity:

Assay type:  
Immunohistochemistry  
Primary antibody type:  
Rabbit Polyclonal  
Secondary antibody type:  
Polymer-HRP-Goat anti-Rabbit

## Kit Component

Component	Size	Concentration
Antigen Retrieval Buffer	100 mL	50×
Washing Buffer	100 mL ×2	20×
Blocking Buffer	5 mL	RTU
Primary Antibody	5 mL	RTU
Secondary Antibody	5 mL	RTU
Chromogen Component A	0.2 mL	RTU
Chromogen Component B	4 mL	RTU
Signal Enhancer	5 mL	RTU
Counter Staining Reagent	5 mL	RTU
Mounting Media	5 mL	RTU
Control Slide	1 slide (Optional)	FFPE
Datasheet	1 Copy	
Manual	1 Copy	

## Storage Instructions

All the reagents are stored at 2-8°C. The kit is stable for 6 months from the date of receipt.

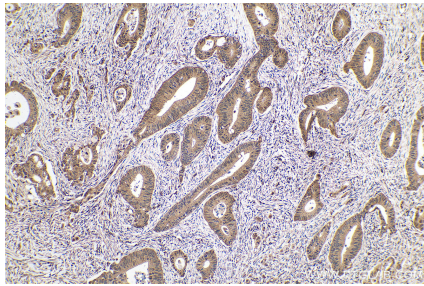
## Background

MCC (mutated in colorectal cancers) gene been previously been identified by virtue of its mutation in human colorectal tumors. As a candidate for the putative colorectal tumor suppressor gene located at 5q21, MCC protein suppresses cell proliferation and the Wnt/b-catenin pathway in colorectal cancer cells. In addition, MCC is involved in cell migration via binding with Scrib and b-catenin.

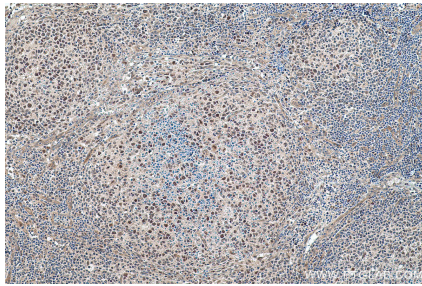
## Synonyms

MCC, MCC1, mutated in colorectal cancers, Protein MCC

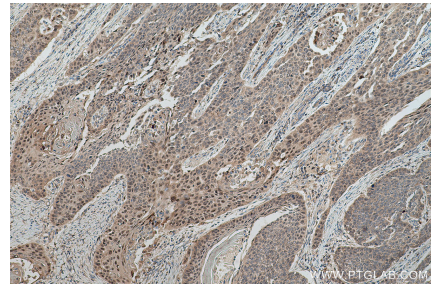
## Selected Validation Data



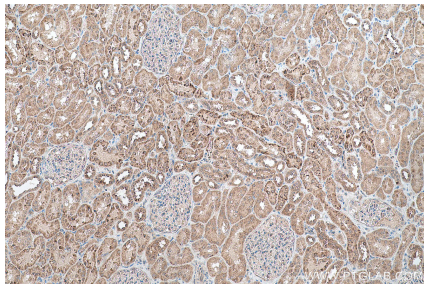
Immunohistochemical analysis of paraffin-embedded human colon cancer tissue slide using KHC0759 (MCC IHC Kit).



Immunohistochemical analysis of paraffin-embedded human lymphoma tissue slide using KHC0759 (MCC IHC Kit).



Immunohistochemical analysis of paraffin-embedded human oesophagus cancer tissue slide using KHC0759 (MCC IHC Kit).



Immunohistochemical analysis of paraffin-embedded human kidney tissue slide using KHC0759 (MCC IHC Kit).