

# IHC*easy* SEPTIN9 Ready-To-Use IHC Kit

Catalog Number: **KHC0738**

## General Information

Sample type:  
FFPE tissue  
Cited sample type:  
Reactivity:  
Human  
Cited Reactivity:

Assay type:  
Immunohistochemistry  
Primary antibody type:  
Mouse Monoclonal  
Secondary antibody type:  
Polymer-HRP-Goat anti-Mouse

## Kit Component

Component	Size	Concentration
Antigen Retrieval Buffer	100 mL	50×
Washing Buffer	100 mL ×2	20×
Blocking Buffer	5 mL	RTU
Primary Antibody	5 mL	RTU
Secondary Antibody	5 mL	RTU
Chromogen Component A	0.2 mL	RTU
Chromogen Component B	4 mL	RTU
Signal Enhancer	5 mL	RTU
Counter Staining Reagent	5 mL	RTU
Mounting Media	5 mL	RTU
Control Slide	1 slide (Optional)	FFPE
Datasheet	1 Copy	
Manual	1 Copy	

## Storage Instructions

All the reagents are stored at 2-8°C. The kit is stable for 6 months from the date of receipt.

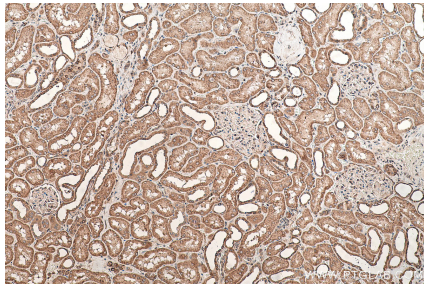
## Background

Septin 9 belongs to the septin family which is a group of highly conserved GTP-binding proteins in eukaryotes. SEPT9 gene methylation has been implicated as a biomarker for colorectal cancer(CRC). Primary antibody in this kit can identify some isoforms about SEPT9.

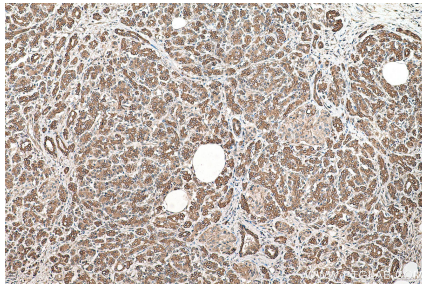
## Synonyms

AF17q25, FLJ75490, KIAA0991, MLL septin like fusion protein, MSF, MSF1, NAPB, Ov/Br septin, Ovarian/Breast septin, PNUTL4, SEPT9, SeptD1, Septin 9, Septin D1, SINT1

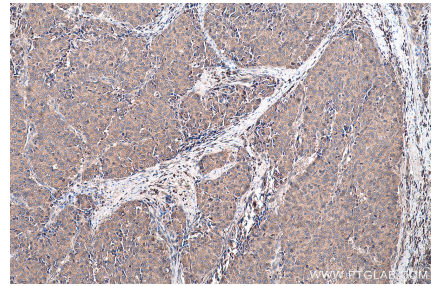
## Selected Validation Data



Immunohistochemical analysis of paraffin-embedded human kidney tissue slide using KHC0738 (SEPTIN9 IHC Kit).



Immunohistochemical analysis of paraffin-embedded human pancreas cancer tissue slide using KHC0738 (SEPTIN9 IHC Kit).



Immunohistochemical analysis of paraffin-embedded human stomach cancer tissue slide using KHC0738 (SEPTIN9 IHC Kit).