

IHC*easy* SEPTIN2 Ready-To-Use IHC Kit

Catalog Number: **KHC0726**

General Information

Sample type:
FFPE tissue
Cited sample type:
Reactivity:
Human, Mouse, Rat
Cited Reactivity:

Assay type:
Immunohistochemistry
Primary antibody type:
Mouse Monoclonal
Secondary antibody type:
Polymer-HRP-Goat anti-Mouse

Kit Component

| Component | Size | Concentration |
|--------------------------|--------------------|---------------|
| Antigen Retrieval Buffer | 100 mL | 50× |
| Washing Buffer | 100 mL ×2 | 20× |
| Blocking Buffer | 5 mL | RTU |
| Primary Antibody | 5 mL | RTU |
| Secondary Antibody | 5 mL | RTU |
| Chromogen Component A | 0.2 mL | RTU |
| Chromogen Component B | 4 mL | RTU |
| Signal Enhancer | 5 mL | RTU |
| Counter Staining Reagent | 5 mL | RTU |
| Mounting Media | 5 mL | RTU |
| Control Slide | 1 slide (Optional) | FFPE |
| Datasheet | 1 Copy | |
| Manual | 1 Copy | |

Storage Instructions

All the reagents are stored at 2-8°C. The kit is stable for 6 months from the date of receipt.

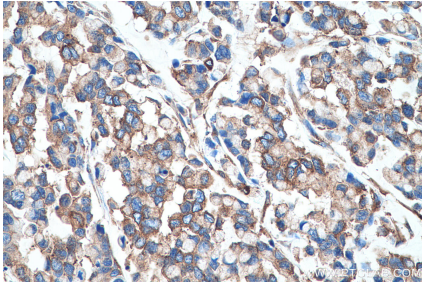
Background

Septin 2, also named as DIFF6, KIAA0158, NEDD5, belongs to the septin family. It is a filament-forming cytoskeletal GTPase. Septin 2 is required for normal organization of the actin cytoskeleton. It plays a role in ciliogenesis and collective cell movements. Septin 2 is coordinated expression with Septin 6 and Septin 7.

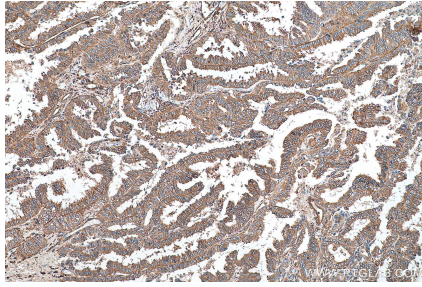
Synonyms

DIFF6, hNedd5, KIAA0158, NEDD 5, NEDD5, SEPT2, SEPT2/septin 2, Septin 2, septin2

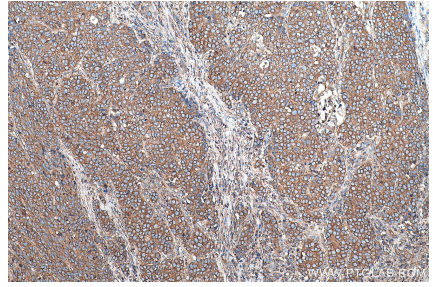
Selected Validation Data



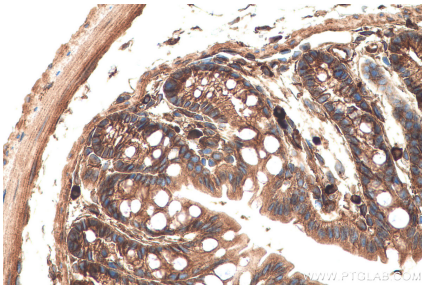
Immunohistochemical analysis of paraffin-embedded human colon cancer tissue slide using KHC0726 (SEPTIN2 IHC Kit).



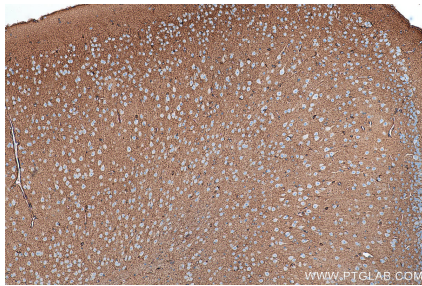
Immunohistochemical analysis of paraffin-embedded human ovary tumor tissue slide using KHC0726 (SEPTIN2 IHC Kit).



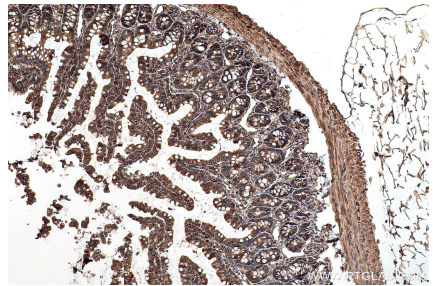
Immunohistochemical analysis of paraffin-embedded human stomach cancer tissue slide using KHC0726 (SEPTIN2 IHC Kit).



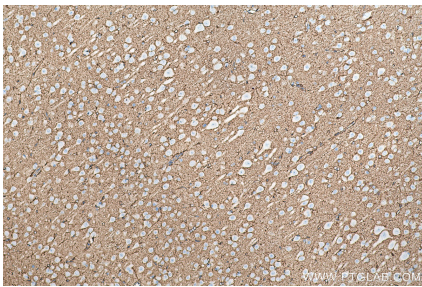
Immunohistochemical analysis of paraffin-embedded mouse colon tissue slide using KHC0726 (SEPTIN2 IHC Kit).



Immunohistochemical analysis of paraffin-embedded mouse brain tissue slide using KHC0726 (SEPTIN2 IHC Kit).



Immunohistochemical analysis of paraffin-embedded rat small intestine tissue slide using KHC0726 (SEPTIN2 IHC Kit).



Immunohistochemical analysis of paraffin-embedded rat brain tissue slide using KHC0726 (SEPTIN2 IHC Kit).