

IHC*easy* WARS Ready-To-Use IHC Kit

Catalog Number: **KHC0718**

General Information

Sample type:
FFPE tissue
Cited sample type:
Reactivity:
Human
Cited Reactivity:

Assay type:
Immunohistochemistry
Primary antibody type:
Mouse Monoclonal
Secondary antibody type:
Polymer-HRP-Goat anti-Mouse

Kit Component

Component	Size	Concentration
Antigen Retrieval Buffer	100 mL	50×
Washing Buffer	100 mL ×2	20×
Blocking Buffer	5 mL	RTU
Primary Antibody	5 mL	RTU
Secondary Antibody	5 mL	RTU
Chromogen Component A	0.2 mL	RTU
Chromogen Component B	4 mL	RTU
Signal Enhancer	5 mL	RTU
Counter Staining Reagent	5 mL	RTU
Mounting Media	5 mL	RTU
Control Slide	1 slide (Optional)	FFPE
Datasheet	1 Copy	
Manual	1 Copy	

Storage Instructions

All the reagents are stored at 2-8°C. The kit is stable for 6 months from the date of receipt.

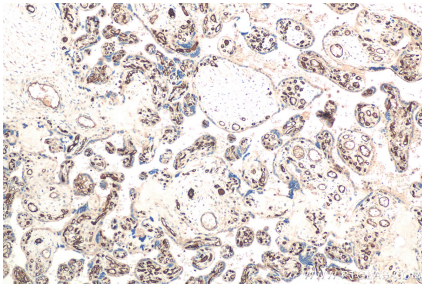
Background

Tryptophanyl-tRNA synthetase (WRS) is a cytosolic amino acyl-tRNA synthetase essential for protein synthesis. Full-length WRS is released during bacterial infection and primes the Toll-like receptor 4 (TLR4)-myeloid differentiation factor 2 (MD2) complex to elicit innate immune responses. Inside the nucleus, WRS stimulates DNA-dependent protein kinase, catalytic subunit (DNA-PKcs), activity via its WHEP domain, leading to the phosphorylation and activation of p53.

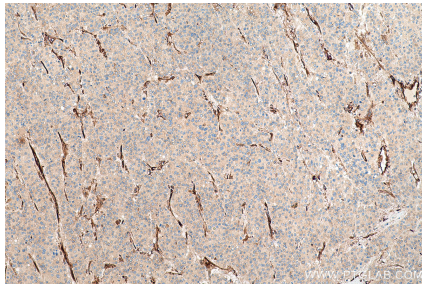
Synonyms

GAMMA 2, hWRS, IFI53, IFP53, Interferon induced protein 53, TrpRS, Tryptophan tRNA ligase, tryptophanyl tRNA synthetase, WARS, WRS

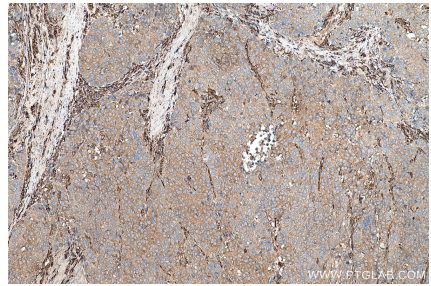
Selected Validation Data



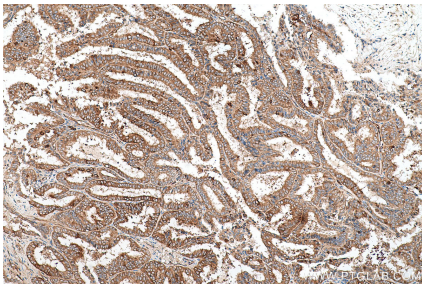
Immunohistochemical analysis of paraffin-embedded human placenta tissue slide using KHC0718 (WARS IHC Kit).



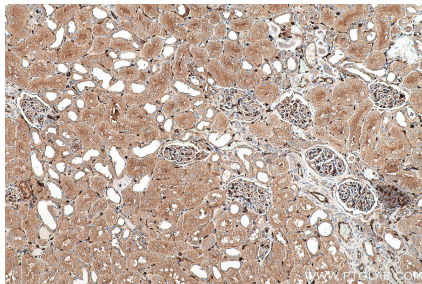
Immunohistochemical analysis of paraffin-embedded human liver cancer tissue slide using KHC0718 (WARS IHC Kit).



Immunohistochemical analysis of paraffin-embedded human stomach cancer tissue slide using KHC0718 (WARS IHC Kit).



Immunohistochemical analysis of paraffin-embedded human ovary tumor tissue slide using KHC0718 (WARS IHC Kit).



Immunohistochemical analysis of paraffin-embedded human kidney tissue slide using KHC0718 (WARS IHC Kit).