

IHC*easy* TALDO1 Ready-To-Use IHC Kit

Catalog Number: **KHC0714**

General Information

Sample type:
FFPE tissue
Cited sample type:
Reactivity:
Human
Cited Reactivity:

Assay type:
Immunohistochemistry
Primary antibody type:
Mouse Monoclonal
Secondary antibody type:
Polymer-HRP-Goat anti-Mouse

Kit Component

Component	Size	Concentration
Antigen Retrieval Buffer	100 mL	50×
Washing Buffer	100 mL ×2	20×
Blocking Buffer	5 mL	RTU
Primary Antibody	5 mL	RTU
Secondary Antibody	5 mL	RTU
Chromogen Component A	0.2 mL	RTU
Chromogen Component B	4 mL	RTU
Signal Enhancer	5 mL	RTU
Counter Staining Reagent	5 mL	RTU
Mounting Media	5 mL	RTU
Control Slide	1 slide (Optional)	FFPE
Datasheet	1 Copy	
Manual	1 Copy	

Storage Instructions

All the reagents are stored at 2-8°C. The kit is stable for 6 months from the date of receipt.

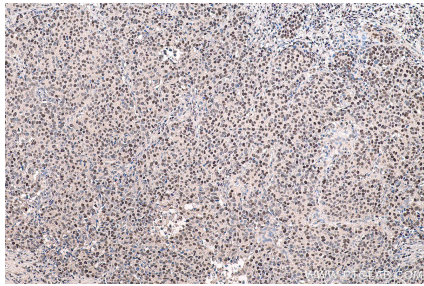
Background

TALDO1 belongs to the transaldolase family which contributes to the generation of NADPH in the nonoxidative phase of the pentose phosphate pathway (PPP). Defects in TALDO1 are the cause of transaldolase 1 deficiency which results in telangiectases of the skin, hepatosplenomegaly, and enlarged clitoris.

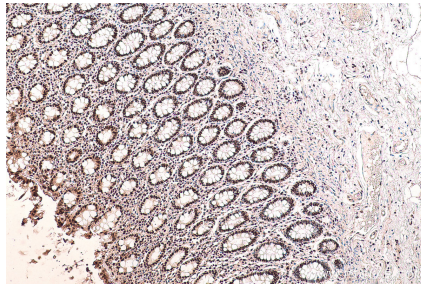
Synonyms

TAL, TAL H, TALDO, TALDO1, TALDOR, TALH, Transaldolase, transaldolase 1

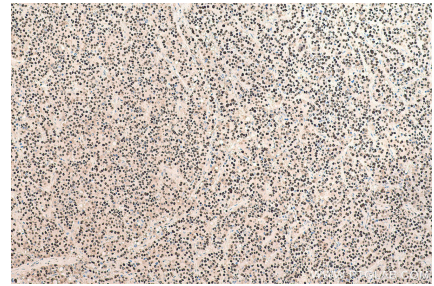
Selected Validation Data



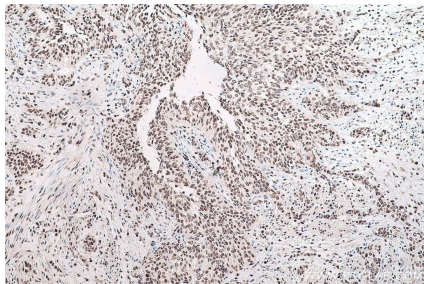
Immunohistochemical analysis of paraffin-embedded human stomach cancer tissue slide using KHC0714 (TALDO1 IHC Kit).



Immunohistochemical analysis of paraffin-embedded human colon tissue slide using KHC0714 (TALDO1 IHC Kit).



Immunohistochemical analysis of paraffin-embedded human liver cancer tissue slide using KHC0714 (TALDO1 IHC Kit).



Immunohistochemical analysis of paraffin-embedded human urothelial carcinoma tissue slide using KHC0714 (TALDO1 IHC Kit).