

# IHC*easy* GMDS Ready-To-Use IHC Kit

Catalog Number: **KHC0697**

## General Information

**Sample type:**  
FFPE tissue

**Cited sample type:**

**Reactivity:**  
Human, Mouse, Rat

**Cited Reactivity:**

**Assay type:**  
Immunohistochemistry

**Primary antibody type:**  
Rabbit Polyclonal

**Secondary antibody type:**  
Polymer-HRP-Goat anti-Rabbit

## Kit Component

Component	Size	Concentration
Antigen Retrieval Buffer	100 mL	50×
Washing Buffer	100 mL ×2	20×
Blocking Buffer	5 mL	RTU
Primary Antibody	5 mL	RTU
Secondary Antibody	5 mL	RTU
Chromogen Component A	0.2 mL	RTU
Chromogen Component B	4 mL	RTU
Signal Enhancer	5 mL	RTU
Counter Staining Reagent	5 mL	RTU
Mounting Media	5 mL	RTU
Control Slide	1 slide (Optional)	FFPE
Datasheet	1 Copy	
Manual	1 Copy	

## Storage Instructions

All the reagents are stored at 2-8°C. The kit is stable for 6 months from the date of receipt.

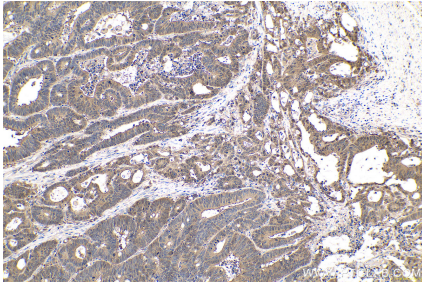
## Background

GDP-D-mannose-4,6-dehydratase (GMDS) is the key enzyme in the 'de novo' pathway of GDP-L-fucose biosynthesis. The enzyme is also named as GMD and belongs to the GDP-mannose 4,6-dehydratase family. The gene encodes a protein that catalyzes the conversion of GDP-mannose to GDP-4-keto-6-deoxymannose, the first step in the synthesis of GDP-fucose from GDP-mannose, using NADP<sup>+</sup> as a cofactor.

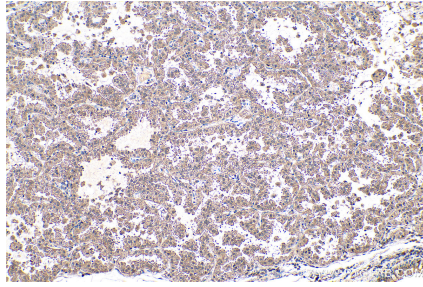
## Synonyms

GDP D mannose dehydratase, GDP mannose 4,6 dehydratase, GMD, GMDS, SDR3E1

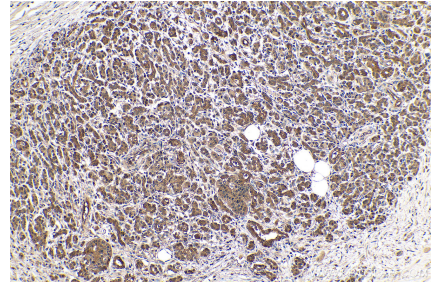
## Selected Validation Data



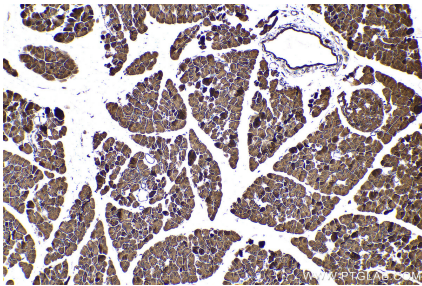
Immunohistochemical analysis of paraffin-embedded human colon cancer tissue slide using KHC0697 (GMDS IHC Kit).



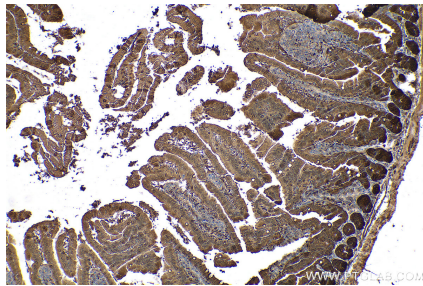
Immunohistochemical analysis of paraffin-embedded human lung cancer tissue slide using KHC0697 (GMDS IHC Kit).



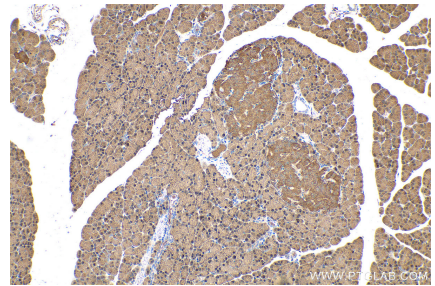
Immunohistochemical analysis of paraffin-embedded human pancreas cancer tissue slide using KHC0697 (GMDS IHC Kit).



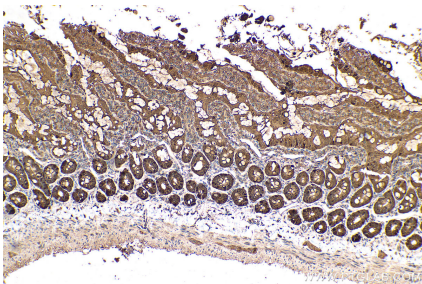
Immunohistochemical analysis of paraffin-embedded mouse pancreas tissue slide using KHC0697 (GMDS IHC Kit).



Immunohistochemical analysis of paraffin-embedded mouse small intestine tissue slide using KHC0697 (GMDS IHC Kit).



Immunohistochemical analysis of paraffin-embedded rat pancreas tissue slide using KHC0697 (GMDS IHC Kit).



Immunohistochemical analysis of paraffin-embedded rat small intestine tissue slide using KHC0697 (GMDS IHC Kit).