

IHC*easy* GLO1 Ready-To-Use IHC Kit

Catalog Number: **KHC0694**

General Information

Sample type:
FFPE tissue
Cited sample type:
Reactivity:
Human, Mouse, Rat
Cited Reactivity:

Assay type:
Immunohistochemistry
Primary antibody type:
Rabbit Polyclonal
Secondary antibody type:
Polymer-HRP-Goat anti-Rabbit

Kit Component

Component	Size	Concentration
Antigen Retrieval Buffer	100 mL	50×
Washing Buffer	100 mL ×2	20×
Blocking Buffer	5 mL	RTU
Primary Antibody	5 mL	RTU
Secondary Antibody	5 mL	RTU
Chromogen Component A	0.2 mL	RTU
Chromogen Component B	4 mL	RTU
Signal Enhancer	5 mL	RTU
Counter Staining Reagent	5 mL	RTU
Mounting Media	5 mL	RTU
Control Slide	1 slide (Optional)	FFPE
Datasheet	1 Copy	
Manual	1 Copy	

Storage Instructions

All the reagents are stored at 2-8°C. The kit is stable for 6 months from the date of receipt.

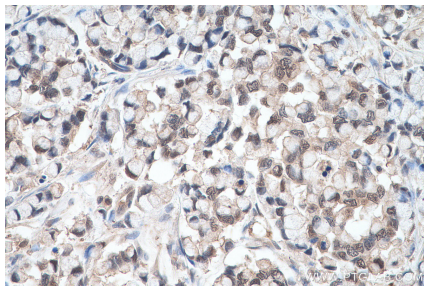
Background

Glo1 is known to play a role in many diseases including diabetes mellitus, Alzheimer's disease, and cancer.

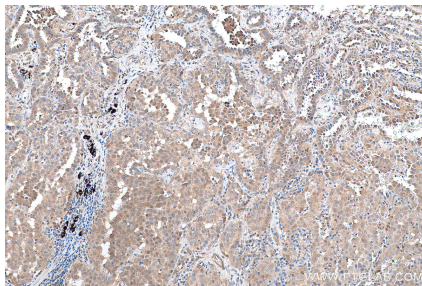
Synonyms

Aldoketomutase, GLO1, GLOD1, Glx I, GLYI, glyoxalase I, Ketone aldehyde mutase, Lactoylglutathione lyase, Methylglyoxalase

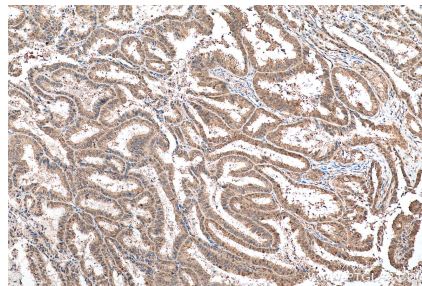
Selected Validation Data



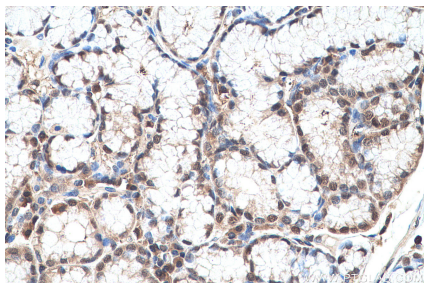
Immunohistochemical analysis of paraffin-embedded human colon cancer tissue slide using KHC0694 (GLO1 IHC Kit).



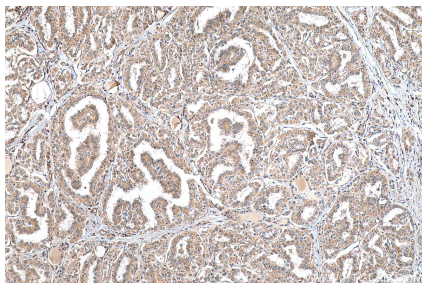
Immunohistochemical analysis of paraffin-embedded human lung cancer tissue slide using KHC0694 (GLO1 IHC Kit).



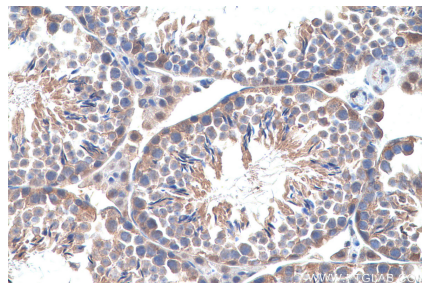
Immunohistochemical analysis of paraffin-embedded human ovary tumor tissue slide using KHC0694 (GLO1 IHC Kit).



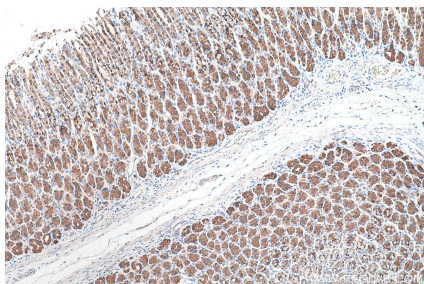
Immunohistochemical analysis of paraffin-embedded human stomach cancer tissue slide using KHC0694 (GLO1 IHC Kit).



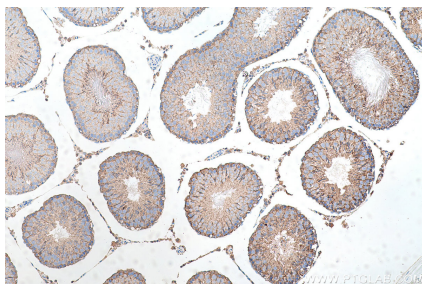
Immunohistochemical analysis of paraffin-embedded human thyroid cancer tissue slide using KHC0694 (GLO1 IHC Kit).



Immunohistochemical analysis of paraffin-embedded mouse testis tissue slide using KHC0694 (GLO1 IHC Kit).



Immunohistochemical analysis of paraffin-embedded rat stomach tissue slide using KHC0694 (GLO1 IHC Kit).



Immunohistochemical analysis of paraffin-embedded rat testis tissue slide using KHC0694 (GLO1 IHC Kit).